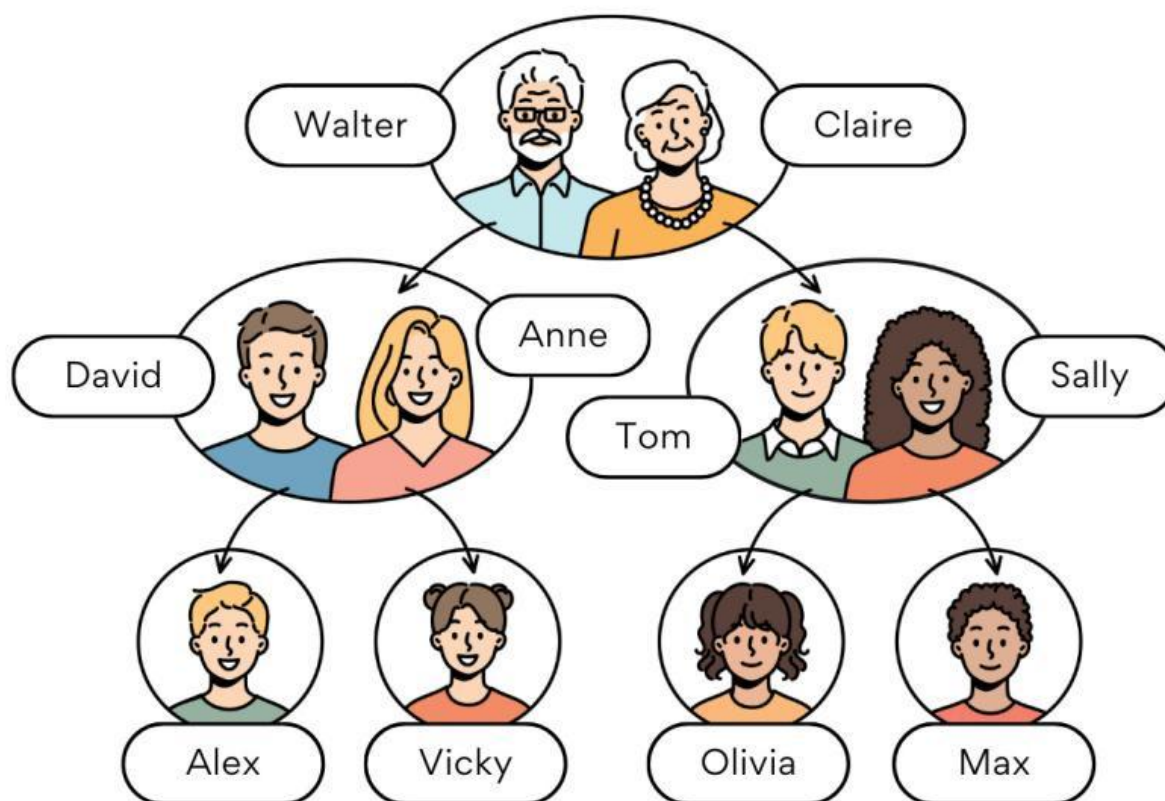


# Family Tree

Look at the family tree and complete the sentences



- 1 Alex is Vicky's \_\_\_\_\_
- 2 David is Alex's \_\_\_\_\_
- 3 Tom is Vicky's \_\_\_\_\_
- 4 Walter is Alex's \_\_\_\_\_
- 5 Anne is Alex's \_\_\_\_\_
- 6 Sally is Vicky's \_\_\_\_\_
- 7 Walter and Claire are Olivia's \_\_\_\_\_
- 8 Olivia and Max are Vicky's \_\_\_\_\_
- 9 David and Anne are Alex's \_\_\_\_\_