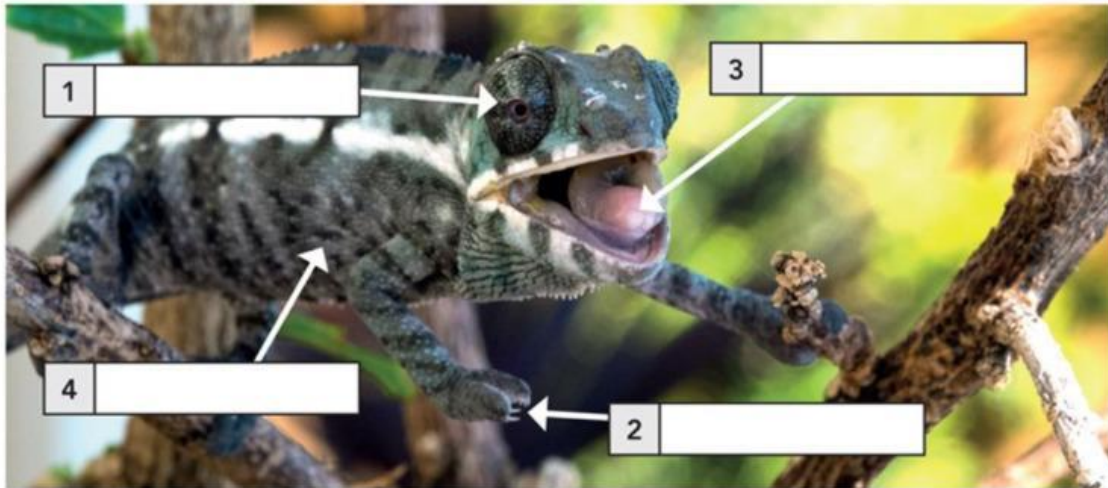


Tip of my tongue!

I. Label the photo.

tongue foot scales eye



II. Watch the video and choose the correct information.

- 1 The panther chameleon can turn its **head** / **eye** 180°.
- 2 The panther chameleon's tongue is long and **fast** / **poisonous**.
- 3 The Komodo dragon is the world's largest **reptile** / **amphibian**.
- 4 It uses its **tongue** / **skin** to smell its prey.
- 5 The horned lizard loves **scorpions** / **ants**.
- 6 The horned lizard sprays blood from its **eye** / **mouth** to protect itself.

III. Complete the summary of the video using the words below.

blood deserts island Madagascar prey
reptiles smell snake's

Some (1) _____ have amazing ways of hunting their (2) _____ and protecting themselves.

In (3) _____, the panther chameleon can easily see bugs and has a long tongue with a sticky tip to capture them.

The Komodo dragon lives on the (4) _____ of Komodo in Indonesia. It has a tongue like a (5) _____ tongue. It uses this to (6) _____ its prey, which can sometimes be 2 or 3 kms away.

The horned lizard lives in the (7) _____ of North America. It is also good at protecting itself from wild animals. It can spray its enemy with (8) _____.

