

26 Checkmate

Chess is probably one of the oldest and most popular indoor games that first appeared in India about the 6th century. It is a game of strategy. It is played by two players.

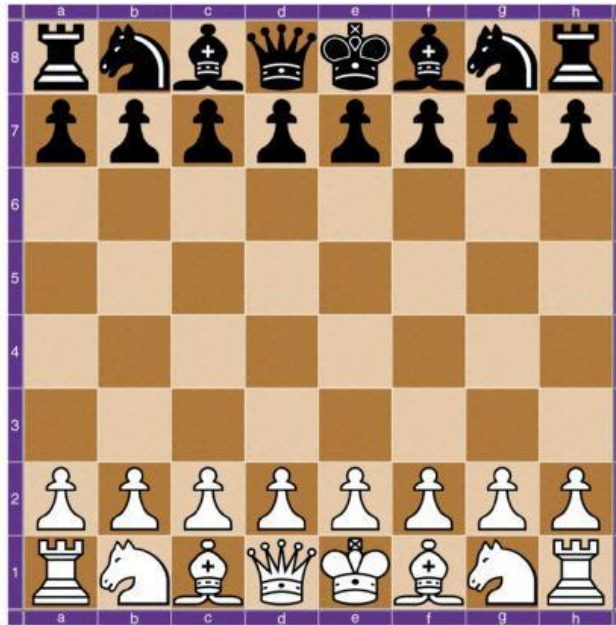
The game is played on a checkerboard with 64 squares. Each player has a set of 16 pieces. One player will have a dark-coloured set, while the other player will have a light-coloured set. The pieces are moved according to fixed rules across the board. The aim of each player is to capture or immobilize the opponent's king.

A chessboard has alternating light and dark-coloured squares.

There are 8 rows (called ranks) and 8 columns (called files). The first file on the left is the 'a' file, next the 'b' file, and so on.

Ranks are numbered 1 through 8 (see diagram). A white square is always on the bottom right of each player.

The player with the white places always starts the game.



When a player puts the opponent's king in check such that the king cannot avoid capture on the next move, the game is won. This is called **Checkmate**.

One of the ways in which the game can result in a draw is when the player who is supposed to make the move is not in check, but has no legal move. This is called **Stalemate**.

Name these famous chess players :



1



2



3



4



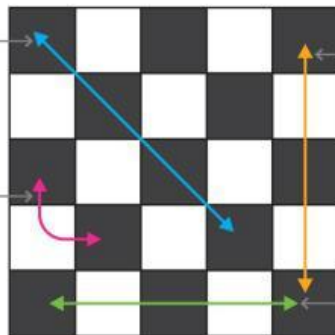
Magnus Carlsen, Vishwanathan Anand, Garry Kasparov, Judit Polgar

Diagonal Move

Forward or backward movement along an oblique line

Square Move

Moving one square forward or backward and then two squares laterally, or two squares forward or backward and then one square laterally.



Vertical Move

Moving forward or backward along a column.

Horizontal Move

Moving forward or backward along a row.

The **pawn** can advance one square at a time, except at the beginning of the game, when it can advance either one or two squares. It captures opposing pieces diagonally.



The **castle** can move backward or forward horizontally or vertically for any number of unoccupied squares.



The **bishop** can move backward or forward diagonally for any number of unoccupied squares.



The most important piece in the game is the **King**. It can move forward or backward in all directions, one square at a time.

The **knight** can move at right angles that is two squares forward and one square left or right. This is the only piece that can jump over any other piece.



The **queen** is the most powerful attack piece. It can move backward or forward in all directions for any number of unoccupied squares.



BOOST UP



Vishwanathan Anand from India has won the chess championship in the years 2000, 2007, 2008, 2010 and 2012.

