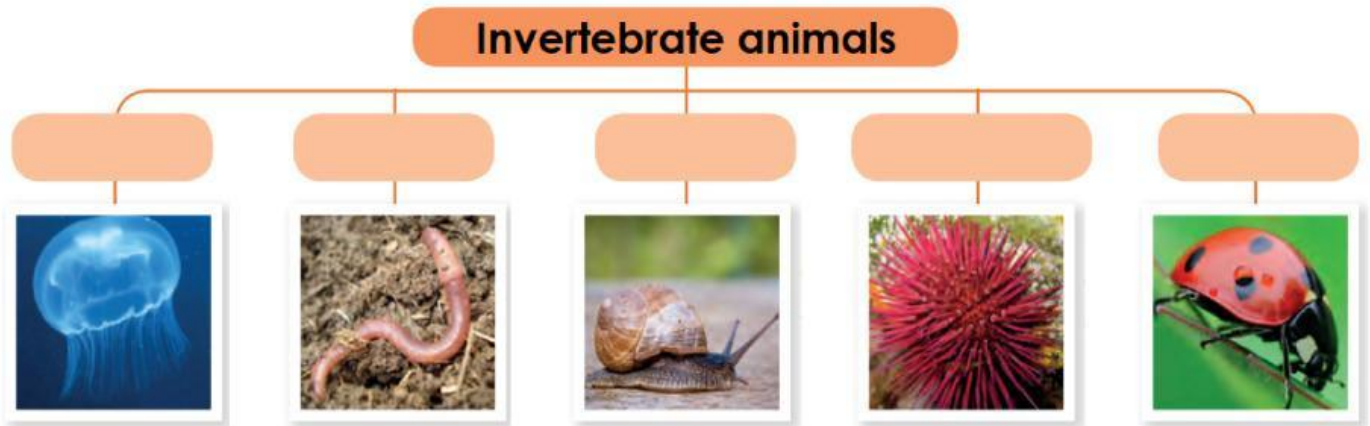
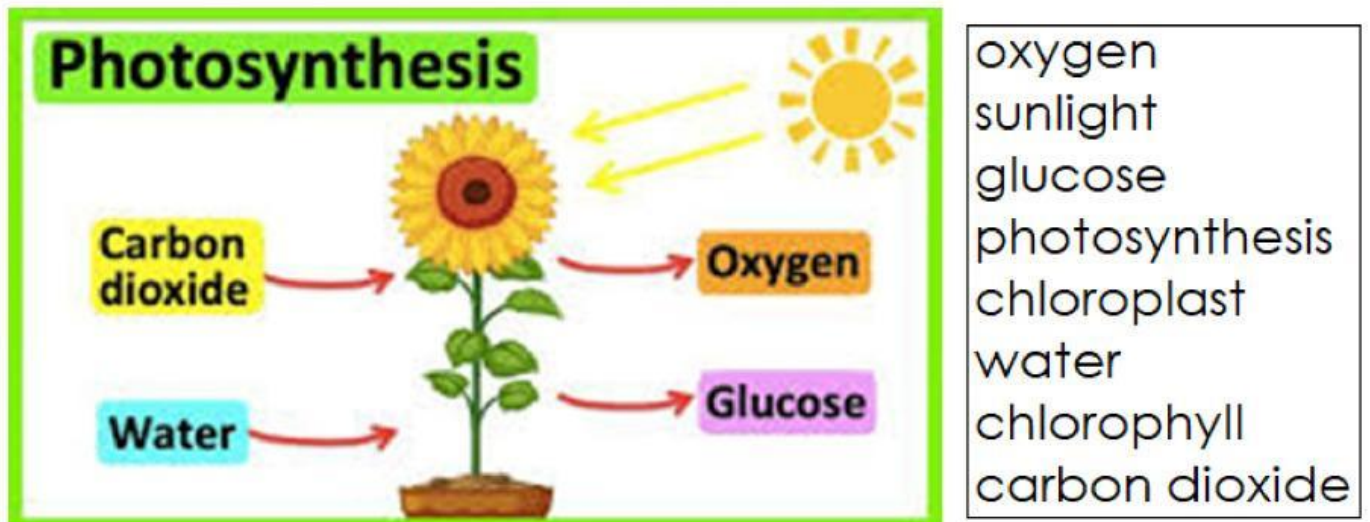


Diagnostic Exam
7° Grade

1. Complete the chart with the invertebrate animals classifications:

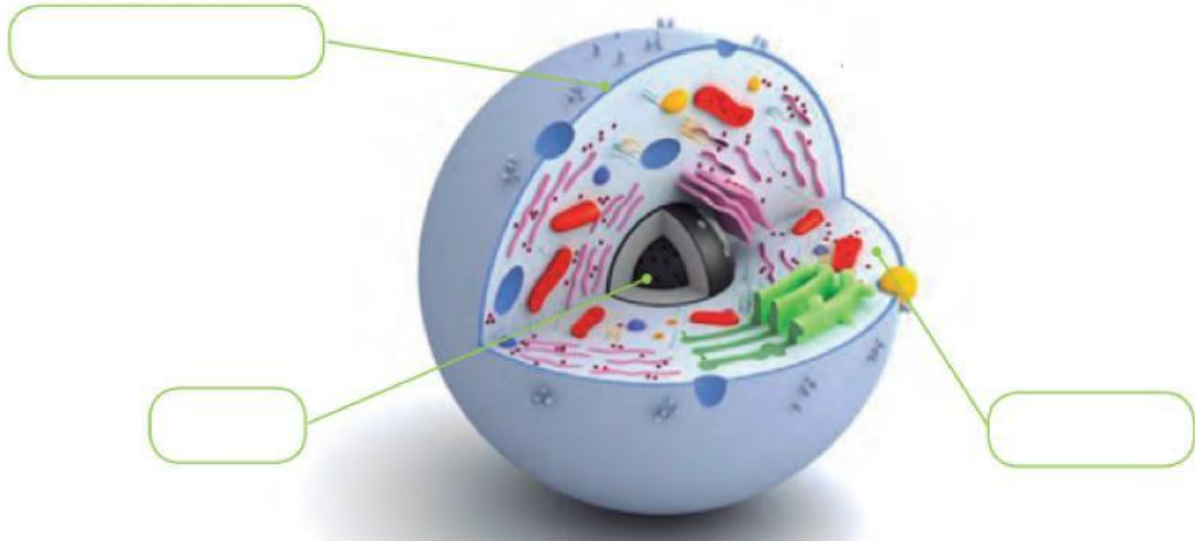


2. Complete the paragraph using the words from the box:



_____ is the process by which plants produce their own food in the presence of _____, _____ and _____. Photosynthesis occurs in the organelle called _____ that's only found in plants. Plants contain a green pigment called _____ that absorbs sunlight. Energy from the sun, carbon dioxide from the atmosphere and water absorbed by the roots react to produce _____ that plants need to survive. _____ is a gas that is released into the environment for animals and humans to breathe.

3. Name the parts of the cell:



4. Complete the missing words about vertebrate animals:

A vertebrate animal is one that has _____; the axis of the skeleton is the _____ formed by _____.

5. Complete the following statements:

- Mammals breathe with their _____.
- _____ are vertebrate animals and must always have moist skin.
- Fish skin is covered with _____ that protects the animal.
- _____ have fins to help them move.
- Fish have _____ that they use for their breathing.
- _____ are the most abundant animals on our planet.

6. Match with a line to the correct answer:

insects

spider

myriapods

crab

arachnids

fly

crustaceans

millipede

7. Write the words from the box next to their definition:

cytoplasm	cell membrane	nucleous
-----------	---------------	----------

• Wraps and delimits the cell.	
• It is bounded by a membrane that separates it from the cytoplasm.	
• Contains cellular organelles in an aqueous medium	

8. Match the statements with their definition:

- | |
|------------------------|
| • temperature |
| • thermometer |
| • wind |
| • atmospheric humidity |
| • precipitations |
| • electric storms |

Moving air that occurs when two masses of air have different temperatures.
Amount of water vapor it contains.
Amount of rain, snow or hail that falls in an area.
Material we use to measure temperature.
Storm that has lightning and thunder.
Degree of heat that the air has in the atmosphere.

9. Drag Earth's Spheres to their correct definition:

Lithosphere

Biosphere

Hydrosphere

Atmosphere

Surrounds the Earth and holds the air we breathe; it protects us from outer space; and holds moisture (clouds), gases, and tiny particles.
The region on, above, and below the Earth's surface where life exists.

The rocky outer part of Earth. It is made up of the brittle crust and the top part of the upper mantle.
The total amount of water on a planet.

10. Match with lines as it corresponds:

Density
Mass
Volume
Solar Power
Wind Power
Hydro Power

Space occupied by matter.
Relationship between the amount of matter and the space it occupies.
Amount of matter.
The mechanical energy of the wind.
Light and heat energy from the sun.
Mechanical energy of moving water.