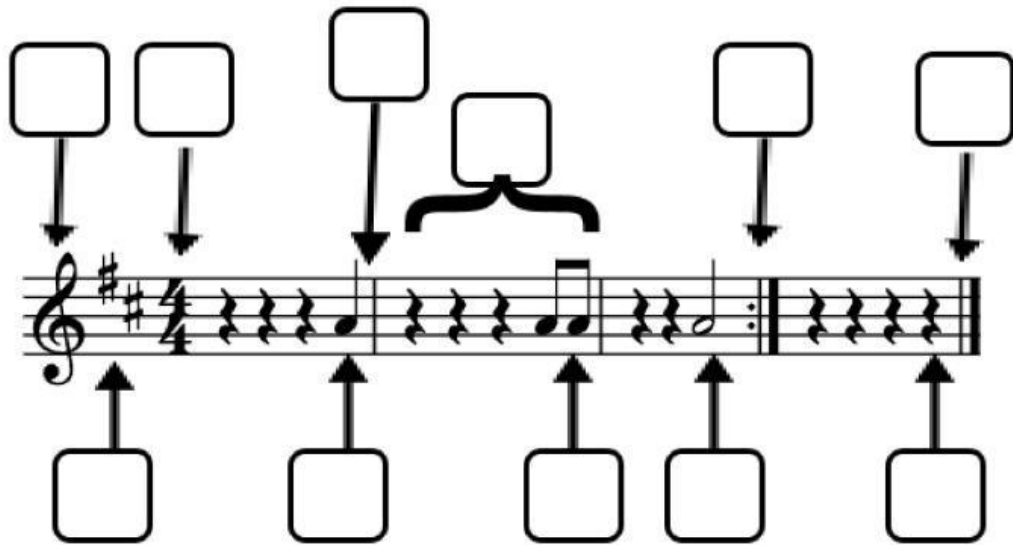


Music Staff ID

Drag the number of the definition to the correct square



1. Repeat sign, tells you to go back to the beginning
2. Clef Sign, tells the player where middle C is
3. Time signature, tells how many beats are in a measure
4. Key signature, tells which notes are sharp or flat in the piece
5. Double Bar, tells when the piece is over
6. Quarter note
7. Half note
8. Eighth note
9. Barline, separates staff into measures
10. Measure, space between two staves
11. Quarter rest

