

CAM 11 LIS TEST 4

SECTION 1

Questions 1 – 7

Complete the table below.

Write **ONE WORD AND/OR A NUMBER** for each answer

Event	Cost	Venue	Notes
Jazz band	<i>Example</i> Tickets available for £15.... ..	The 1..... school	Also appearing: Carolyn Hart (plays the 2.....)
Duck races	£1 per duck	Start behind the 3.....	Prize: tickets for 4..... held at the end of the festival. Ducks can be bought in the 5.....
Flower show	Free	6..... Hall	Prizes presented at 5 pm by a well-known 7.....

Questions 8-10

Who is each play suitable for?

Write the correct letter, **A**, **B** or **C**, next to Questions 8-10

- A mainly for children
- B mainly for adults
- C suitable for people of all ages

Plays

- 8 The Mystery of Muldoon
- 9 Fire and Flood
- 10 Silly Sailor

SECTION 2

Audio Player

Use Up/Down Arrow keys to increase or decrease volume.

SECTION 2

Questions 11 – 16

What does the speaker say about each of the following collections?

Choose **SIX** answers from the box and write the correct letter, **A-G**, next to Questions 11-16.

Comments

- A was given by one person
- B was recently publicised in the media
- C includes some items given by members of the public
- D includes some items given by the artists
- E includes the most popular exhibits in the museum
- F is the largest of its kind in the country
- G has had some of its contents relocated

Collections

- 11 20th- and 21st-century paintings
- 12 19th-century paintings

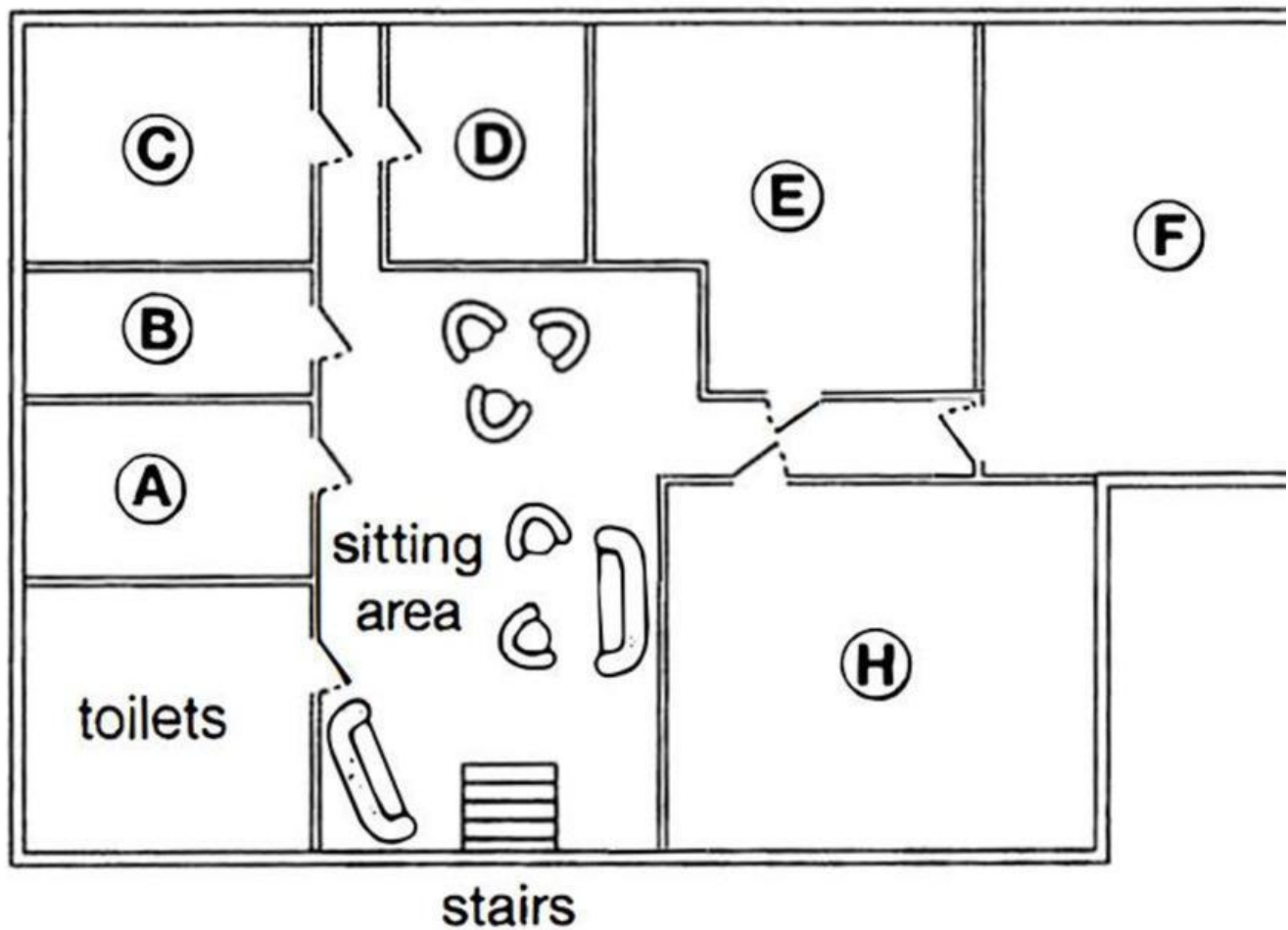
- 13 Sculptures
- 14 'Around the world' exhibition
- 15 Coins
- 16 Porcelain and glass

Questions 17-20

Label the plan below.

Write the correct letter, **A-H**, next to Questions 17-20.

Basement of museum



- 17 restaurant
- 18 café

.....

.....

19	baby-changing facilities
20	cloakroom