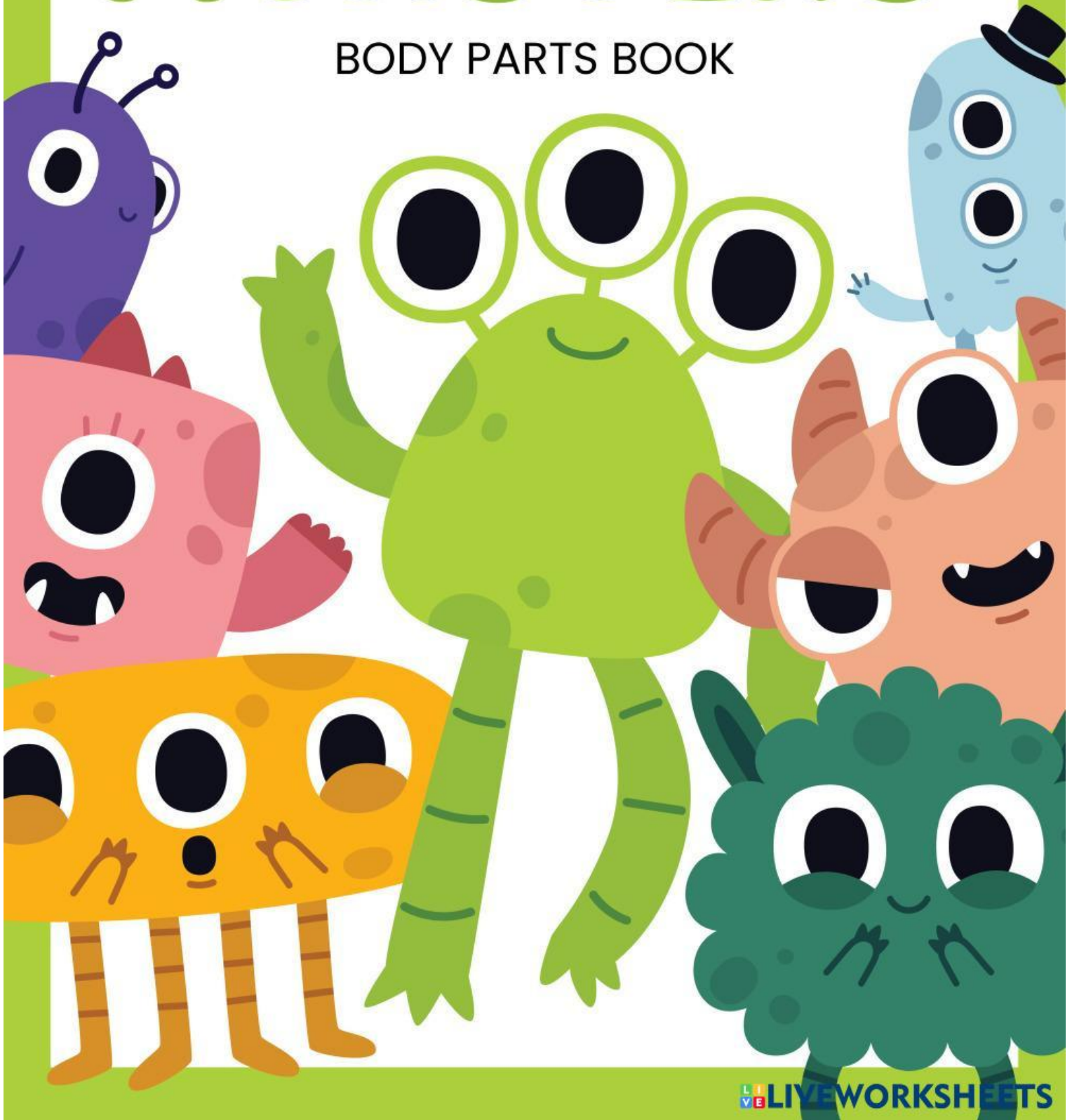


# LITTLE MONSTERS'

BODY PARTS BOOK



# LITTLE MONSTER

Count the body parts of the monster  
and fill in the boxes with numbers.



Its color is \_ \_ \_ \_ \_

I have  legs

I have  feet

I have  eyes

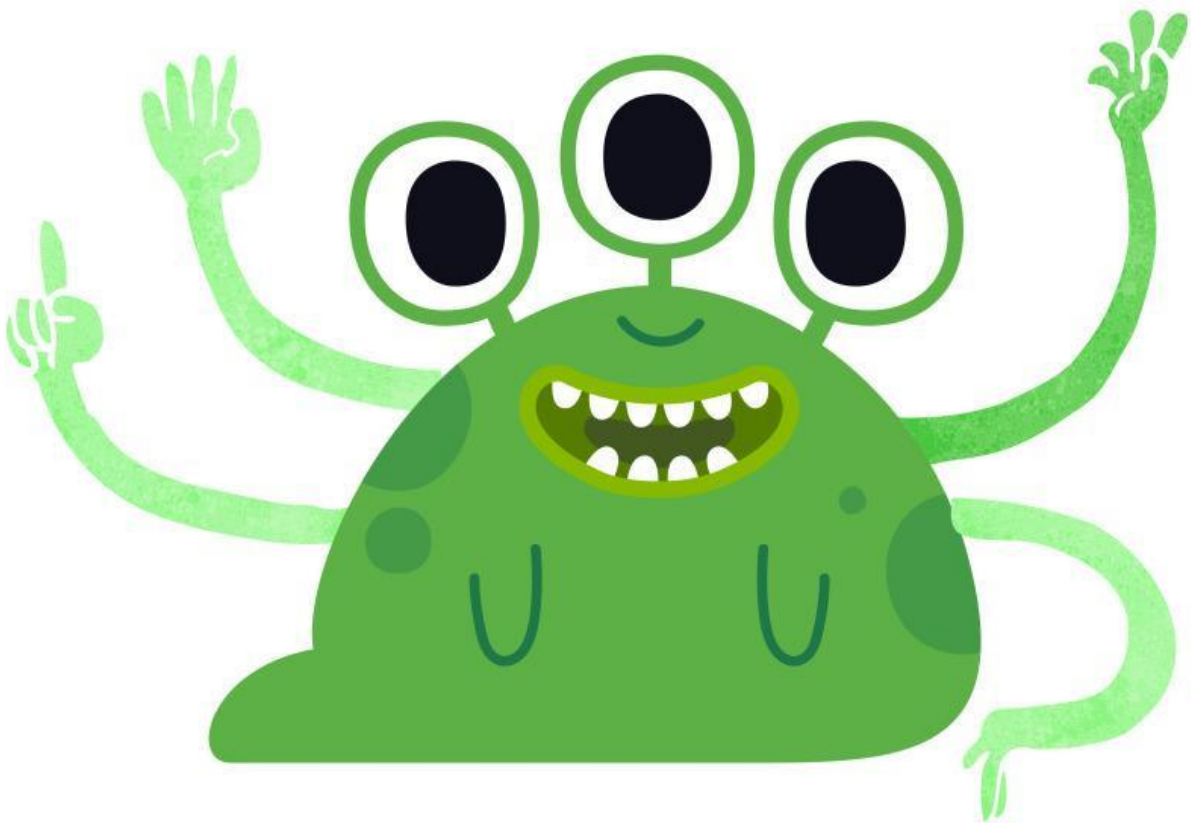
I have  mouth

I have  arms

I have  ears

# LITTLE MONSTER

Count the body parts of the monster  
and fill in the boxes with numbers.



Its color is \_ \_ \_ \_ \_

I have  legs

I have  feet

I have  eyes

I have  mouth

I have  arms

I have  ears

# LITTLE MONSTER

Count the body parts of the monster  
and fill in the boxes with numbers.



Its color is \_ \_ \_ \_ \_

I have  legs

I have  feet

I have  eyes

I have  mouth

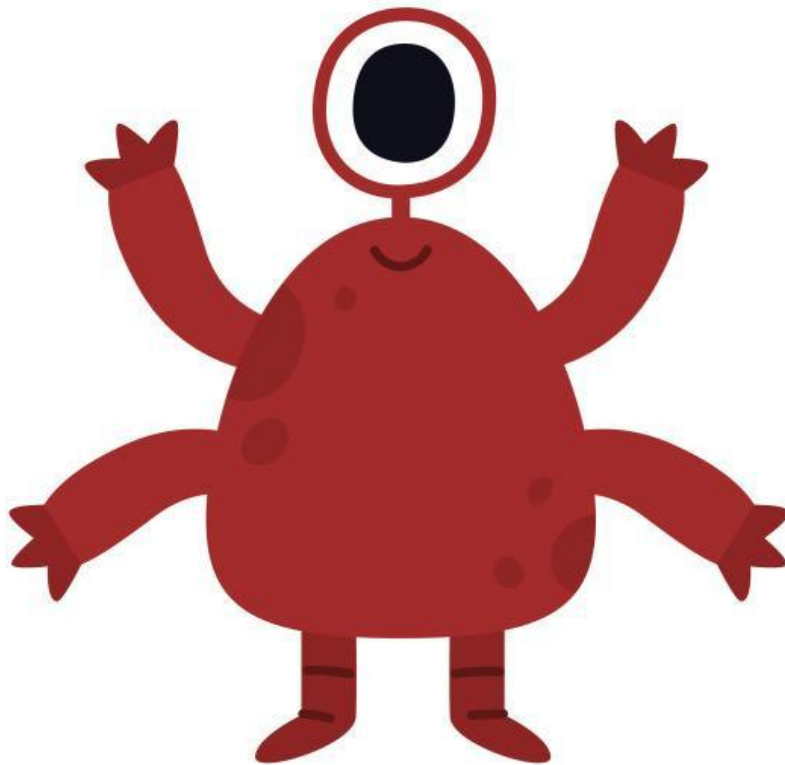
I have  arms

I have  ears



# LITTLE MONSTER

Count the body parts of the monster  
and fill in the boxes with numbers.



Its color is \_ \_ \_ \_ \_

I have  legs

I have  feet

I have  eyes

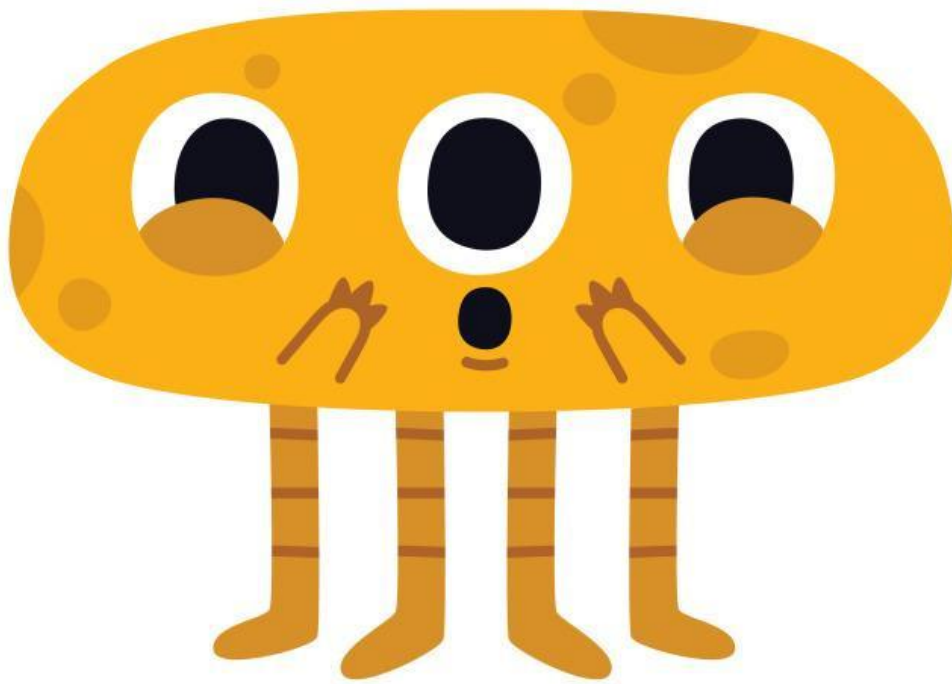
I have  mouth

I have  arms

I have  ears

# LITTLE MONSTER

Count the body parts of the monster  
and fill in the boxes with numbers.



Its color is \_ \_ \_ \_ \_

I have  legs

I have  mouth

I have  feet

I have  arms

I have  eyes

I have  ears

# LITTLE MONSTER

Count the body parts of the monster  
and fill in the boxes with numbers.



Its color is \_ \_ \_ \_ \_

I have  legs

I have  feet

I have  eyes

I have  mouth

I have  arms

I have  ears

# LITTLE MONSTER

Count the body parts of the monster  
and fill in the boxes with numbers.



Its color is \_ \_ \_ \_ \_

I have  legs

I have  feet

I have  eyes

I have  mouth

I have  arms

I have  ears



# LITTLE MONSTER

Count the body parts of the monster  
and fill in the boxes with numbers.



Its color is \_ \_ \_ \_ \_

I have  legs

I have  feet

I have  eyes

I have  mouth

I have  arms

I have  ears

# LITTLE MONSTER

Count the body parts of the monster  
and fill in the boxes with numbers.



Its color is \_ \_ \_ \_ \_

I have  legs

I have  feet

I have  eyes

I have  mouth

I have  arms

I have  ears

# LITTLE MONSTER

Count the body parts of the monster  
and fill in the boxes with numbers.



Its color is \_ \_ \_ \_ \_

I have  legs

I have  feet

I have  eyes

I have  mouth

I have  arms

I have  ears

# LITTLE MONSTER

Count the body parts of the monster  
and fill in the boxes with numbers.



Its color is \_ \_ \_ \_ \_

I have  legs

I have  feet

I have  eyes

I have  mouth

I have  arms

I have  ears



# LITTLE MONSTER

Count the body parts of the monster  
and fill in the boxes with numbers.



Its color is \_ \_ \_ \_ \_

I have  legs

I have  feet

I have  eyes

I have  mouth

I have  arms

I have  ears

# LITTLE MONSTER

Count the body parts of the monster  
and fill in the boxes with numbers.



Its color is \_ \_ \_ \_ \_

I have  legs

I have  mouth

I have  feet

I have  arms

I have  eyes

I have  ears