

Exam Practice Test 2 Reading Part 5

TIP

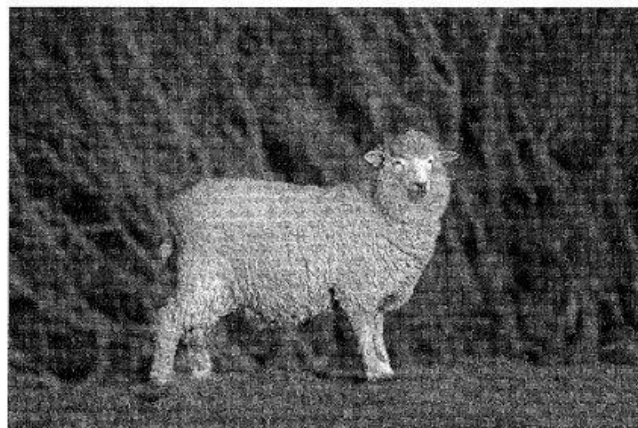
For each gap, decide what kind of word, the 4 options are, e.g. noun, verb.

Questions 21–26

For each question, choose the correct answer.

Sheep can recognise faces!

Many people think sheep aren't very intelligent creatures. But in fact, (21) to new research, they may be cleverer than we think. For example, sheep can actually be trained to recognise human faces from photographs!



Recognising faces is an important human social

(22) However, it seems that sheep are also social animals that can recognise other sheep as well as (23) humans. In experiments, researchers trained eight sheep to recognise the faces of celebrities from photographs. Training involved getting the sheep to (24) decisions about the photos they saw. At one end of a room, they would see two different photographs, and would receive a (25) of food for approaching the photograph of the celebrity; if they approached the wrong photograph, they got nothing. Over time, they learned to (26) getting food with the celebrity's photograph. And after training, the sheep correctly chose the celebrity's face eight times out of ten!

- | | | | |
|----------------|-------------|-------------|-------------|
| 21 A regarding | B following | C resulting | D according |
| 22 A skill | B talent | C knowledge | D method |
| 23 A ordinary | B usual | C familiar | D frequent |
| 24 A set | B make | C have | D do |
| 25 A reward | B benefit | C tip | D goal |
| 26 A attach | B join | C add | D connect |