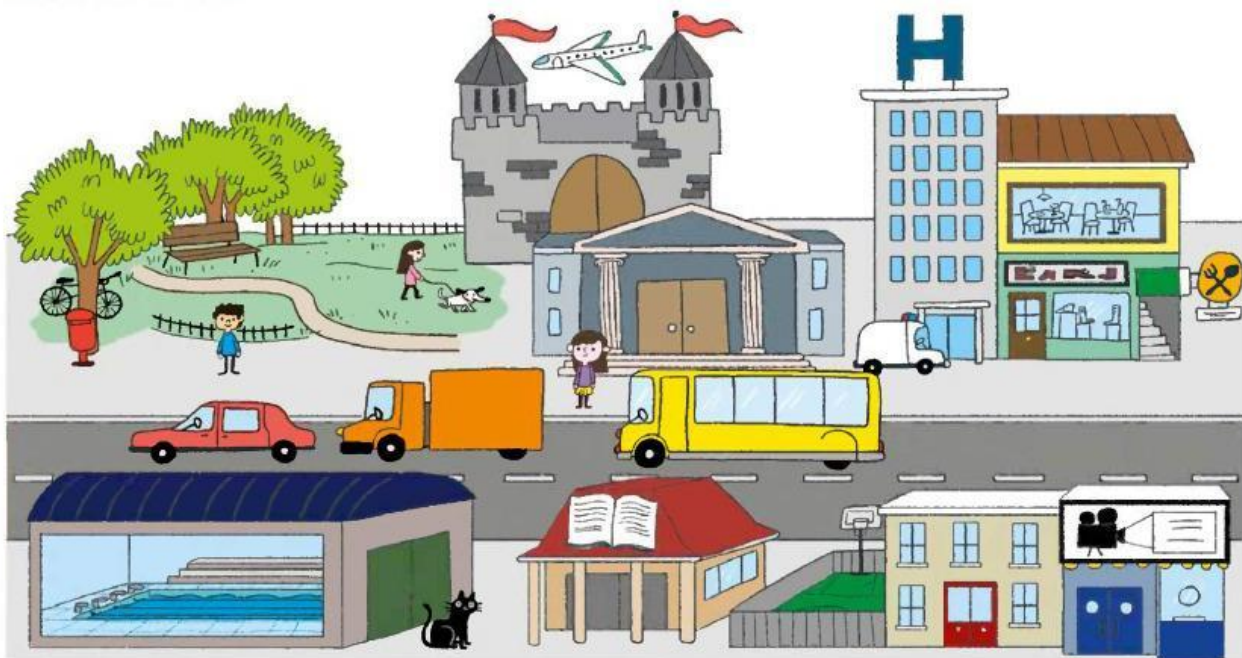


1 Read and circle.



- 1 The school is the cinema.
- 2 The library is the swimming pool and the school.
- 3 The museum is the library.
- 4 The restaurant is the shoe shop.
- 5 The castle is the museum.

2 Look at the picture in activity 1 and complete.

opposite in front of ~~between~~ next to behind above

- 1 Where's the lorry? It's between the car and the bus.
- 2 Where's the bike? It's _____ the tree.
- 3 Where's the girl? She's _____ the museum.
- 4 Where's the cat? It's _____ the swimming pool.
- 5 Where's the plane? It's _____ the castle.
- 6 Where's the boy? He's _____ the swimming pool.

Extra Grammar Practice Page 72