

QUESTION 1

Identify the adverbial phrase in the sentence:

The students eagerly completed their homework after school.

- A eagerly
- B after school
- C completed their homework
- D the students



QUESTION 2

Choose the correct adverbial phrase for time:

She visits her grandparents _____ the holidays.

A joyfully

B during

C besides the lake

D quickly



QUESTION 3

In the sentence:

'Slowly, the leaves fell from the trees,'

what type of adverbial phrase is used?

- A Time
- B Place
- C Manner
- D Reason



QUESTION 4

Which sentence contains a fronted adverbial phrase?

- A They played football in the park.
- B Later that day, they played football.





They..... watch their favorite series because the internet connection was gone.

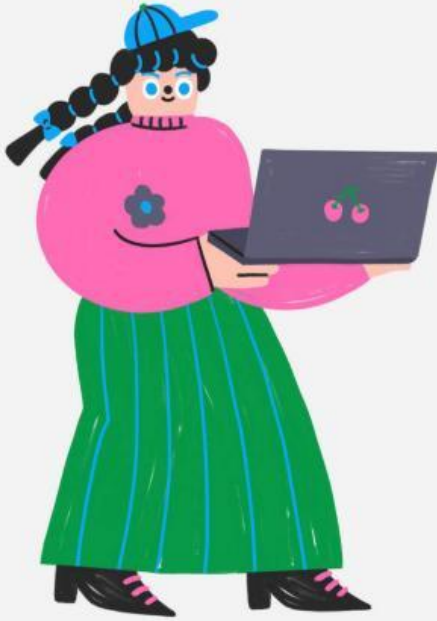
- a) can't
- b) couldn't
- c) didn't can

It's Monday. Their assignment is due on Tuesday morning.

They..... finish it today.

- a) must
- b) can
- c) may





She's usually tired in the morning. She.....play computer games so late at night.

- a) shouldn't
- b) should
- c) could



Dani looks happy.
He.....have gotten a good
grade in the exam.

- a) must
- b) can't
- c) can



You..... pay for coffee.
Dani has already paid the bill.

- a) couldn't
- b) shouldn't
- c) don't have to

"Whose laptop is this?"

"I'm not sure. It.....be
Olivia's."

- a) has to
- b) must
- c) might



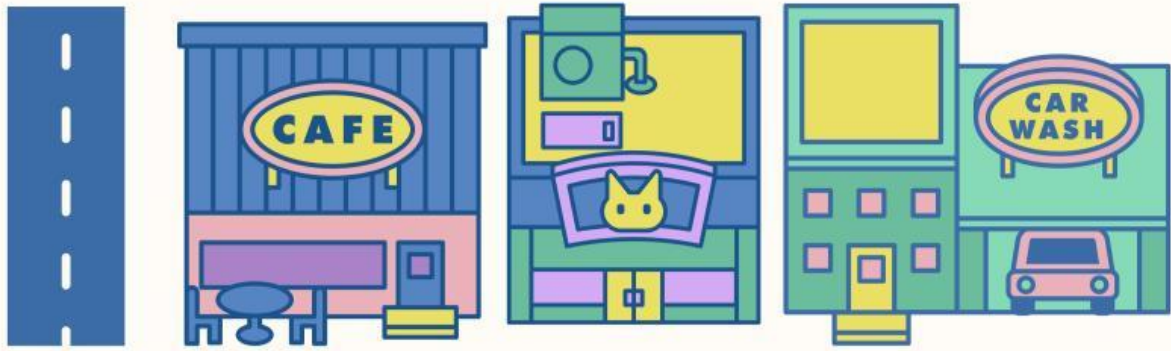


The car wash is the city hall

NEXT TO

OPPOSITE

BETWEEN

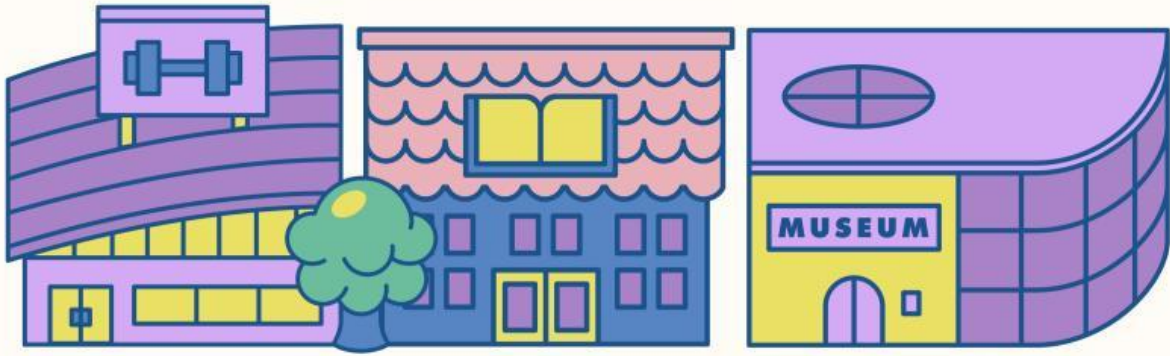


The cafe is

NEXT TO

OPPOSITE

ON THE CORNER



There is a tree the gym

IN FRONT OF

OPPOSITE

BETWEEN

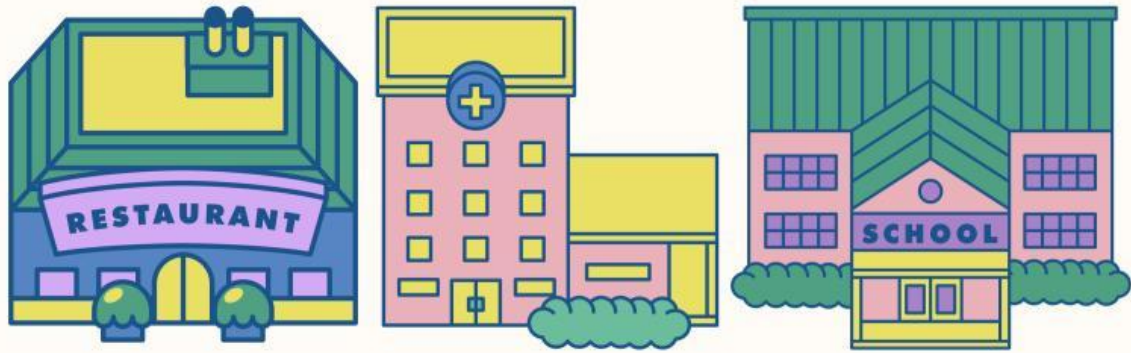


There is a school the hospital

BETWEEN

OPPOSITE

NEXT TO



There is a hospital
the restaurant and the school

BETWEEN

OPPOSITE

NEXT TO