

ARTICLES

Read the postcard and fill in 'a/an' or 'the' or '- '.

Dear Uncle Josh,

We're on holiday in London. The weather's great for sightseeing. sun's shining. We met Watsons here. They saw British Museum and National Gallery. We visited Hyde Park and went on boat trip on Thames to Tower Bridge. Yesterday we visited Buckingham Palace hoping to see Queen. Unfortunately, Queen Elizabeth II wasn't at home at the time. After dinner I'm going with Mrs Watson to Harrods to do some shopping there. Tomorrow we're visiting Tower of London and Big Ben.

That's all for now.

Love,

Tina



Mr Josh Green

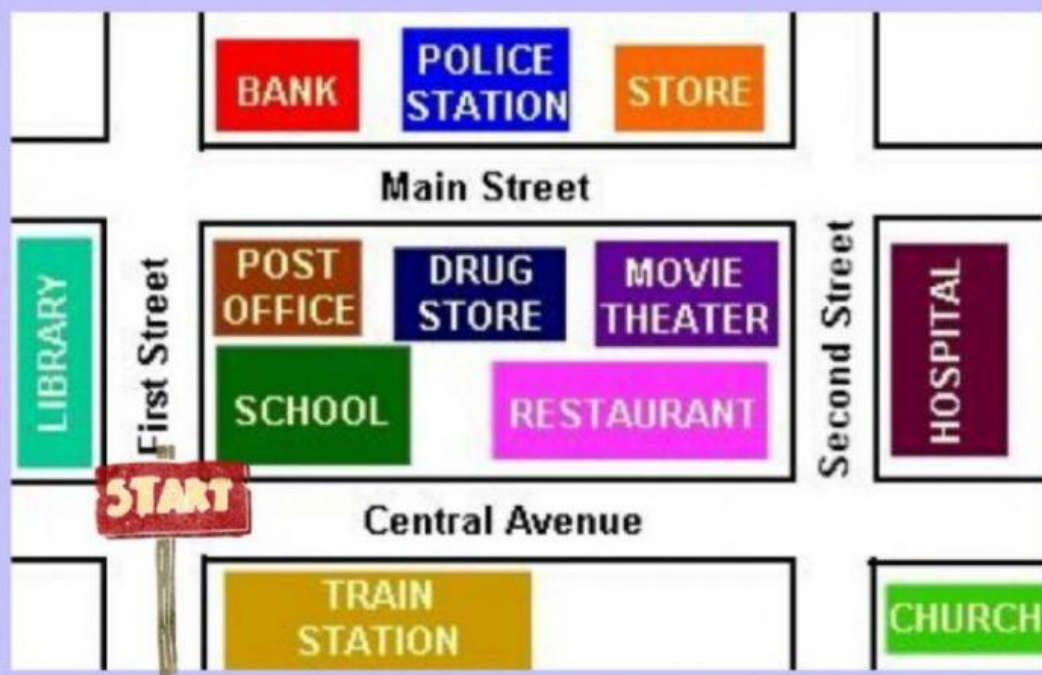
8 Hills Street

Cardiff CF12

UK



Look at the map. Use the words below to write directions from the train station to the Police Station AND the Movie Theater.



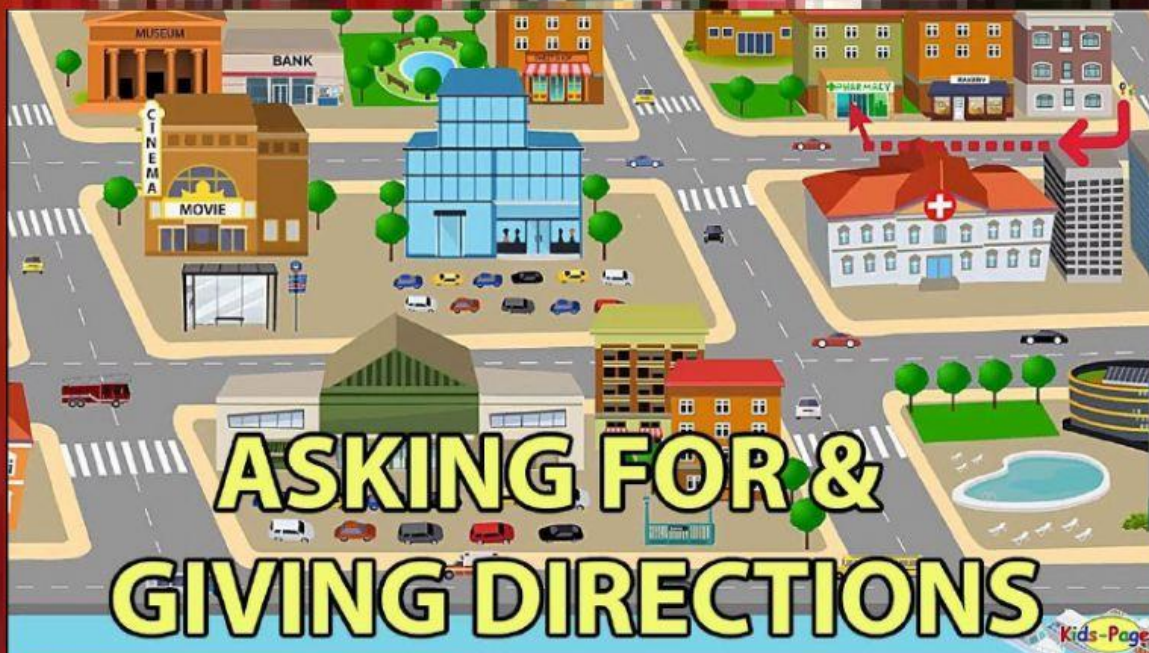
straight
left
right
Turn
First
Main Street
Central Avenue
Main Street
Second
between
across from
on the corner of

1. POLICE STATION:

Go.....on.....Street. right on..... The police station is.....the bank and the store,the drug store.

2. MOVIE THEATER:

Turn.....on Go straight to Second Street. Turnon.....Street. Turn left again on The movie theater is Second Street and Main Street.



INDEFINITE PRONOUNS

Complete the sentences with the correct indefinite pronouns.



I saw _____
at the bus stop,
but I didn't know
who it was.



I'm hungry. I
want _____
to eat.



There's _____
in the classroom.



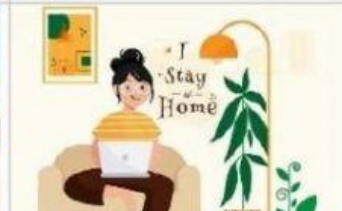
They have been _____
in the world.



worked hard at
the project.



There's trash _____
at the beach.



She isn't going

right now.



I have _____
I need to make
the cake.



I can't do _____
if I'm on vacation!



My mom gave
me _____
for my birthday.



But my
grandfather didn't
give me _____.



There was _____
in the house.

VOCABULARY

Put the letters to the correct order to make words to complete the sentences.

- What can I see when I go
1 _____ in your city? IGNETISEGHS
- Well, there's a 2 _____ TEUSAT
of a famous king. It's in the middle
of a large 3 _____. UERQAS
There are lots of interesting old
4 _____ around it. SNIBGIDLU
You can also see the King's
5 _____ next to a EPCALA
very big 6 _____. SMUMUE
- Great. Can you give me
7 _____ from STRIDECONI
the station?
- Sure. You go down the High
Street, past the 8 _____ HETRAET
on the right. At the
9 _____, turn right ATRUBONDUE
and go across the
10 _____. GRIBED
Then you'll see it. It's easy!
- Thanks.