



# ASSESMEN SUMATIF AKHIR TAHUN (ASAT) TAHUN PELAJARAN 2022/2023 SEKOLAH MENENGAH PERTAMA (SMP) KABUPATEN KENDAL

Mata Pelajaran : **BAHASA INGGRIS** Hari/Tanggal : Rabu, 14 Juni 2023  
Kelas : **VII/TUJUH** Waktu : 07.30 – 09.30 (120 Menit)

## PETUNJUK UMUM

1. Bacalah terlebih dahulu petunjuk mengerjakan soal pada lembar jawab.
2. Bacalah tiap-tiap soal dengan baik sebelum anda kerjakan.
3. Kerjakan terlebih dahulu soal yang anda anggap paling mudah.
4. Semua jawaban ditulis pada lembar jawaban yang tersedia.
5. Lembaran soal tidak boleh dicorat-coret/ditulis.
6. Laporkan kepada pengawas kalau terdapat tulisan yang kurang jelas atau ada yang rusak.
7. Periksa pekerjaan anda baik-baik sebelum anda serahkan kepada pengawas.

## I. MULTIPLE CHOICES

**Choose the best answer for each questions by crossing the alphabetical symbol A, B, C, D, on your answer sheet.**

*The following text is for no. 1 and 2.*

Galang : Kak Sinta, do you have English on Tuesday?  
Sinta : No, I don't. Why are you asking?  
Galang : I just want to borrow your dictionary. I have English on that day.  
Sinta : Sure, go ahead. Anyway, I have English on Monday and Wednesday.  
Galang : Oh, great! My English class is on Tuesday and Thursday.  
Sinta : All right then. You can use my dictionary on Tuesday or Thursday.  
Galang : Thanks, Kak Sinta.  
Sinta : Anytime.

1. What does the dialog mostly about?
  - A. Galang wants to borrow Sinta's dictionary.
  - B. Sinta wants to borrow Galang's dictionary.
  - C. Sinta has English on Tuesday and Thursday.
  - D. Galang has English on Monday and Wednesday.
2. From the dialog we know that Galang and Sinta have ....
  - A. own dictionary
  - B. same schedule
  - C. English lesson
  - D. different subject

The following text is for no. 3 to 6.

**Sherly's schedule**

Time	Monday	Tuesday	Wednesday	Thursday	Friday
07.30 - 08.30	Maths	Indonesian Language	English	Natural Sciences	Maths
08.30 - 09.30				ICT	Civic Education
09.30 - 10.00	Breaks	Breaks	Breaks	Breaks	Breaks
10.00 - 11.00	Local Content Subject	Natural Sciences	Social Sciences	Social Sciences	PE
11.00 - 12.00	Religious Education		Art And Culture		

3. How long does Sherly study Maths on Monday?
  - A. thirty minutes
  - B. sixty minutes
  - C. an hour
  - D. two hours
4. What does Sherly usually bring on Friday?
  - A. dictionary
  - B. sport uniform
  - C. colored pencils
  - D. drawing book
5. Sherly has ICT ....
  - A. one day
  - B. two days
  - C. once a week
  - D. twice a week
6. Sherly has Social Sciences ... breaks on Wednesday.
  - A. before
  - B. after
  - C. then
  - D. next
7. Arrange the sentences to be a good dialog.
  - 1) Dayu : Yes, I do. I always study every day.
  - 2) Dayu : Oke. Let's go.
  - 3) Udin : Do you study every day?
  - 4) Udin : Let's study together tomorrow.
  - A. 2-1-4-3
  - B. 2-3-4-1
  - C. 3-1-4-2
  - D. 3-2-1-4

The following text is for no. 8 to 11.

Rafli watches TV every weekend and sometimes after school. He likes game shows and his favorite program is Takeshi's Castle. He likes it because it's interesting and funny. He usually watches it once a week. He never watches soap operas because he thinks they are boring and he doesn't like cartoons at all because his little sister always watches them.

8. What is Rafli's interest after school?
  - A. Playing interesting outdoor games.
  - B. Watching his favorite TV program.
  - C. Watching cartoon film and soap operas.
  - D. Playing his favorite and funny games.
9. Why does the writer write the text?
  - A. To describe Rafli's activities.
  - B. To tell about Rafli's hobby.
  - C. To introduce Rafli's program.
  - D. To show about Rafli's family.
10. He usually watches it once a week.? The underlined word refers to ....
  - A. Cartoons
  - B. Soap Operas
  - C. Takeshi's Castle
  - D. TV
11. Rafli never watches soap operas. From this sentence, we know that Rafli ... soap operas.
  - A. like
  - B. likes
  - C. don't like
  - D. doesn't like
12. Complete the dialog based on the picture!



- Dika : Do you like ... ?  
Rio : No, I like Basket ball
- A. Basket ball
  - B. Volley ball
  - C. Takrow
  - D. Soccer

13. Complete the dialog based on the picture!



Andre : Are you join extracurricular activities, Tiara?

Tiara : Yes, of course Andre.

I like singing, so I join ... club.

- A. choir
- B. dancing
- C. painting
- D. science

14. Complete the dialog based on the picture!



Rizki : Are you free this afternoon?

Andi : Yes, I'm free. I think Beto is free, too.

Rizki : That's good. Let's practice swimming.

Andi : What time?

Rizki : Let's gather at my home at ....

- A. a quarter to three
- B. a quarter past three
- C. a quarter to four
- D. a quarter past four

15. Arrange the jumble words into a good sentence.

I half six past have usually a at breakfast

1 2 3 4 5 6 7 8 9

- A. 1-6-4-3-5-9-8-7-2
- B. 1-6-5-9-7-8-2-4-3
- C. 1-6-5-9-8-7-2-4-3
- D. 1-6-9-5-8-7-2-4-3

16. Arrange the jumble words into a good sentence.

you school how after do often homework do ?

1 2 3 4 5 6 7 8 9

- A. 3-1-5-4-2-6-8-7-9
- B. 3-4-1-5-7-6-2-8-9
- C. 3-5-4-2-6-8-2-7-9
- D. 3-6-5-1-8-7-4-2-9



The following text is for no. 17 to 19.

Pratama Arhan is an Indonesian professional footballer. He was born in Blora, Central Java, on 21 December 2001. He plays as a left back, right back or left wing for J2 League club Tokyo Verdy and the Indonesian National Team. He has powerful throw-ins and free kicks. He is one of the best football players of his generation. He has a market value of IDR 4.2 billion.

Arhan won the award as the best youngest player in 2021. This made him an offer to have a career abroad. PSIS Semarang is willing to release Arhan to the J-League 2 club, Tokyo Verdy for free in Februari 2022.

Arhan does not want to waste this opportunity. He is always enthusiastic every time he takes part in warm-up, jogging and rondo sessions. He trains every day to the maximum because playing abroad, especially in Japan, requires something special. He has to be mentally strong. He must be independent and be able to compete with local Japanese players who have good quality.

17. What does Arhan do to have good quality?
  - A. Wastes his opportunity.
  - B. Requires something special.
  - C. Trains everyday seriously.
  - D. Competes with lokal players.
18. Is he the best football player of his generation?
  - A. Yes, he is
  - B. No, He is not
  - C. Yes, he does
  - D. No, he does not
19. From the text we can conclude that Pratama Arhan is not ....
  - A. rich
  - B. lazy
  - C. clever
  - D. young

The following text is for no. 20 to 22.

Choose the right word to complete the text.

I have a rabbit. His fur is white and has black spots. He has two (20)... ears and a short tail. He also has cute red big eyes! My rabbit likes to eat carrot and other vegetables. When I release my rabbit out of his cage, he used to (21)... everywhere and hard to catch. So, I could just put him on his cage because I'm afraid that he might running away. I don't want to lost my rabbit because I (22)... him very much.

<https://www.jagoanbahasainggris.com/2017/04/7-contoh-descriptive-text-tentang-hewan.html>

20. ....  
A. long  
B. short  
C. big  
D. small
21. ....  
A. fly  
B. jump  
C. climb  
D. slither
22. ....  
A. love  
B. loves  
C. loving  
D. loved
23. My sister has a pet. It has soft fur. The color is brown and white. Her pet has four legs and long tail. It likes to catch mouse. Her pet is a ....  
A. rabbit  
B. squirrel  
C. dog  
D. cat
24. Complete these following dialogue!  
Rinda : Nisa, ....  
Nisa : Turn left and go straight, the clinic is in the corner of the corridor.  
A. Do you know something new?  
B. May I ask you something?  
C. Where is the clinic?  
D. Can I show you the clinic?

25.



What does the sign mean?

- A. Turn left  
B. Turn right  
C. Go straight  
D. Straight ahead

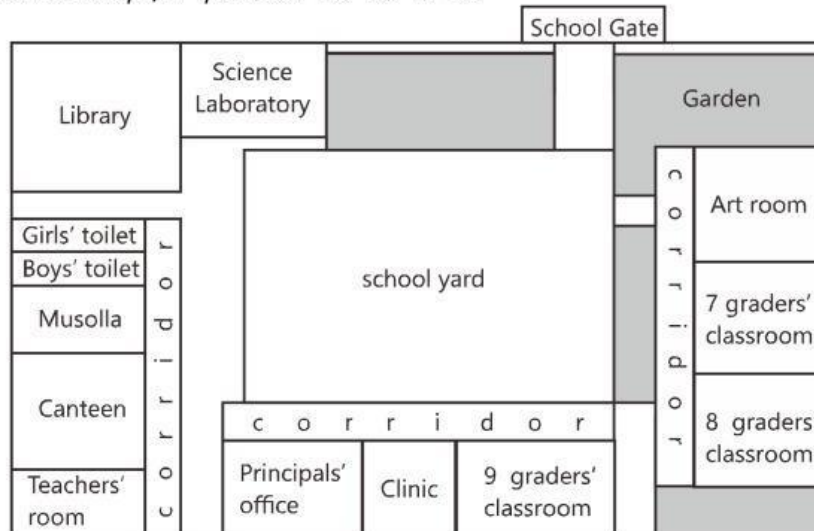
The following text is for no. 26 to 29.

I'm proud of my school. Our teachers are smart. We have many good books and magazine in our big and comfortable school library. There are many rooms in my school. There are twenty-four clean and tidy classrooms and ten toilets. There is a teacher's room, a science laboratory, a language laboratory, a computer laboratory and a mosque at right side. There is a large yard in the middle of my school area for doing sport and flag ceremony. My school is green and shady because there are many trees in front of the yard. My friends and I like sitting under the trees during the break. I love it.

<https://www.jagoanbahasainggris.com/2017/04/7-contoh-descriptive-text-tentang-hewan.html>

26. Why is the writer's school green and shady?
- A. There are many trees in front of the yard.
  - B. There are twenty-four classrooms there.
  - C. There is a large yard in the middle of school area
  - D. There is a teacher's room at right side of school area.
27. Where do students carry out the flag ceremony?
- A. in the classroom
  - B. in school library
  - C. at teacher's room
  - D. at large school yard
28. I love it.  
The underlined word refers to ....
- A. the school
  - B. the break
  - C. the class
  - D. the tree
29. There are twenty-four clean and tidy classrooms.  
What is the closest meaning of the underlined word?
- A. messy
  - B. nice
  - C. neat
  - D. big

The picture of a school map for question no. 30 to 35.



30. Look at the school map and complete the dialog.

Pipit : Hey, Siti, what room is that?

Siti : Which one?

Pipit : The one ... the principal's office and the ninth graders' classroom?

Siti : Oh, that is the clinic.

Pipit : I see.

- A. below
- B. beside
- C. behind
- D. between

31. Based the school map above, the art room is ... the seventh graders' classroom.

- A. below
- B. beside
- C. behind
- D. between

32. Look at the school map above and complete the sentence.

... room near library that students can do experiment.

- A. There are
- B. There are two
- C. There is an
- D. There is a



## II. Complex Multiple Choice

You can choose 2 correct answers for questions number 33 to 40

33. Look at the school map above then answer the question. (You can choose 2 correct answers)

Which statements are true?

- A. There are two rooms beside the clinic.
- B. There are many new books they have.
- C. There is a student's toilet at school.
- D. There is a large school yard in the middle.

34. Look at the school map above then answer the question. (You can choose 2 correct answers)

Where is the principal's office? It's ....

- A. in front of library.
- B. beside the clinic.
- C. near teacher's room.
- D. opposite the art room.

The following text is for no. 35 and 36.

Leni : Hey, look at this extracurricular schedule.

Amel : What do you join?

Leni : You know, all students must join the scout every Thursday.

Amel : Yeah, you are right. And we can join dancing every Saturday, too.

Leni : Okay.

35. What extracurricular activities do they join? (You can choose 2 correct answers)

A.



B.



C.



D.



36. When do Amel and Leni practice extracurricular activities? (You can choose 2 correct answers)
- A. Monday
  - B. Tuesday
  - C. Thursday
  - D. Saturday

The picture for question no. 37 and 38.



37. How is the classroom? (You can choose 2 correct answers)
- A. It's too dirty.
  - B. It's pleasant
  - C. It isn't tidy
  - D. It isn't messy
38. What should we do to this classroom? (You can choose 2 correct answers)
- A. We sweep and mop the floor everyday.
  - B. We always throw the garbage in the dustbin.
  - C. We water plant and flower twice a day.
  - D. We usually break the chairs dan tables.

The following text is for no. 39 and 40

Stevie Wonder from the United States is one of the people with disabilities who has successfully inspired the whole world. He suffers from blindness. However, Stevie has many advantages behind its disadvantages. He is good at singing, playing music, writing songs, and is even now a record producer.



39. What can Stevie Wonder do? (You can choose 2 correct answers)
- A. He can see well.
  - B. He can sing well.
  - C. He can write many wonderful stories.
  - D. He can play many music instruments.
40. What does Stevie Wonder like? (You can choose 2 correct answers)
- A. He likes to see music show around the world.
  - B. He likes to manage the recording process for a musician.
  - C. He likes to write and arrange lovely songs.
  - D. He likes to look at the musicians' performances.

### III. ESSAY

The following text is for no. 41 and 42

Today, there is a school event in SMP Merdeka. There are many competitions to join in. There is a basketball competition in the school field. There are also other competitions that are held in some classes.

Yusuf and his friends want to join the basketball competitions. They will compete against another class. Agnes likes to sing. She wants to join the singing competition. Her voice is so beautiful. Monita wants to join the storytelling competition. She is registering for it in the library.

There is also an art exhibition. There are many handicrafts like keyrings and paintings to sell. Andre wants to buy a painting. He is going to the art exhibition now.

41. What competitions are held at a school event of SMP Merdeka?

42. State whether the statements are true (T) or false (F).

Statements		True	False
A.	Basketball competition is in the school field.		
B.	Monita has beautiful voice to join the singing competition.		
C.	There is a painting competition in the school hall.		
D.	All competitions are for students.		

43. Arrange the words to make sentences!

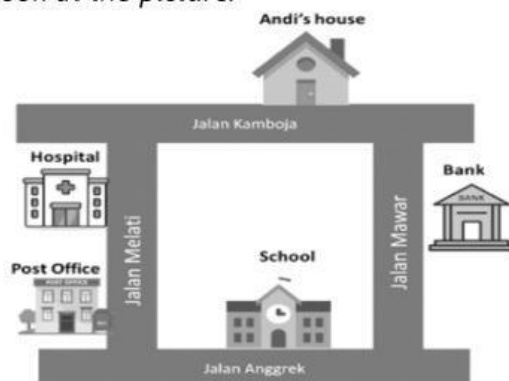
a. you – please – be – Could – quiet, – ?

b. me – how to – the post office – go – Can – to – tell – you – ?

44. Match the activity in the left column with the correct adverb of frequency in the right column.

The activity		Adverb of frequency
A. We do flag ceremony every Monday.	....	• Yearly
B. I have English every Wednesday and Friday	....	• Daily
C. Lina always cleans her room every morning.	....	• Twice a week
D. The Indonesian people celebrate Independence Day every August 17 <sup>th</sup>	....	• Once a week

45. Look at the picture.



Andi wants to go to the post office to send a package. It's the first time he goes there. Please tell Andi how to go to the post office.

