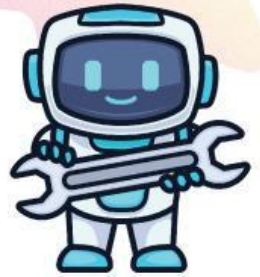


# COLLEGE INTERVIEW LISTENING



Listen to the conversation and answer the questions.

**1. Where did Ms. Benitez born?**

- a) Boston
- b) San Pedro
- c) East Boston

**2. How long has Ms. Benitez lived in Boston?**

- a) all of her life
- b) since high school
- c) since she was four years old

**3. When did she start her interest in Robotics?**

- a) since she was born
- b) since she was in high school
- c) after she knew this institution

**4. Which one is NOT was she had done when she was in high school?**

- a) She was the students' President.
- b) She was a member of Robotics Association.
- c) She was named the class valedictorian.

**5. Which one is NOT TRUE about MIT?**

- a) It's very competitive.
- b) It provides a robotics engineering program.
- c) It has only engineering program.

**6. Why does Ms. Benitez want to study at MIT?**

- a) it's near her home
- b) it's famous for robotics engineering
- c) it has a variety of program to choose

**7. What does Dr. Vekmen think about her weakness?**

- a) It's quite weird.
- b) It's not considered to be weakness.
- c) It's hard for the people to understand her.

**8. What is Ms. Benitez's weakness?**

- a) She is too determined.
- b) She is open-minded.
- c) She is narrow-minded.

**9. What is one of Ms. Benitez's strengths?**

- a) She is determined.
- b) She is narrow minded.
- c) She is very competitive.

**10. How can Ms. Benitez check her acceptance result?**

- a) check on institution website
- b) go to ask for the result at the institution.
- c) call the institution staff