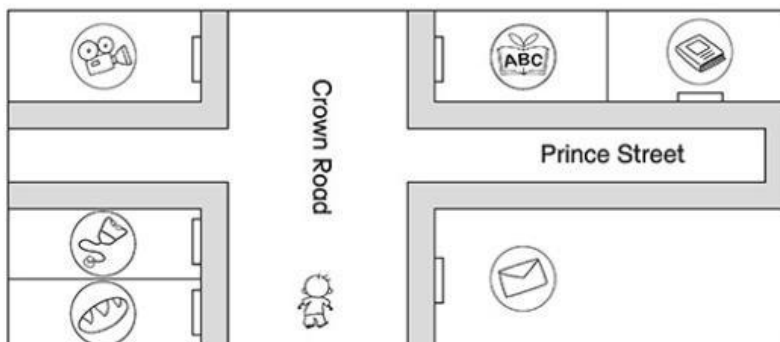


### Prepositional phrases



The bakery is **on your left**. The post office is **on your right**.  
 The bakery is **next to** the clinic.  
 The cinema is **at the corner of** Prince Street and Crown Road.  
 The learning centre is **opposite** the cinema.  
 The book shop is **at the end of** Prince Street.

Warm  
up

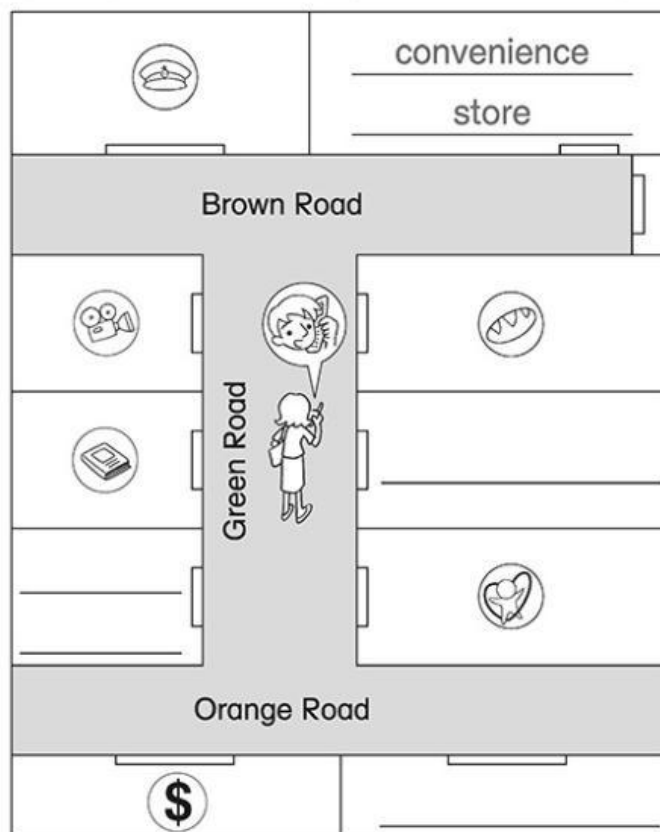
Read the sentences and write the names of the places on the map. Follow the example.

- 1 The **convenience store** is at the end of Brown Road.
- 2 The **news-stand** is next to the bank.
- 3 The **hospital** is opposite the book shop.
- 4 The **post office** is at the corner of Green Road and Orange Road.

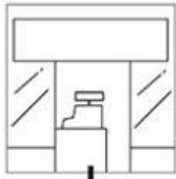
Practice

Finish what the man says.

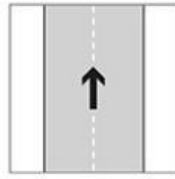
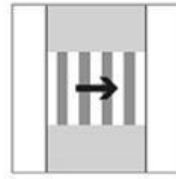
- 1 The hospital is on your \_\_\_\_\_.
- 2 The health and beauty store is \_\_\_\_\_ the hospital.
- 3 The post office is \_\_\_\_\_ the health and beauty store.
- 4 The cinema is \_\_\_\_\_ Brown Road and Green Road.



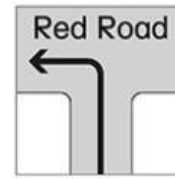
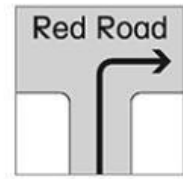
Date: \_\_\_\_\_

**Giving directions**

go out of

go / walk  
straight ahead

walk across

turn left  
(into Red Road)turn right  
(into Red Road)

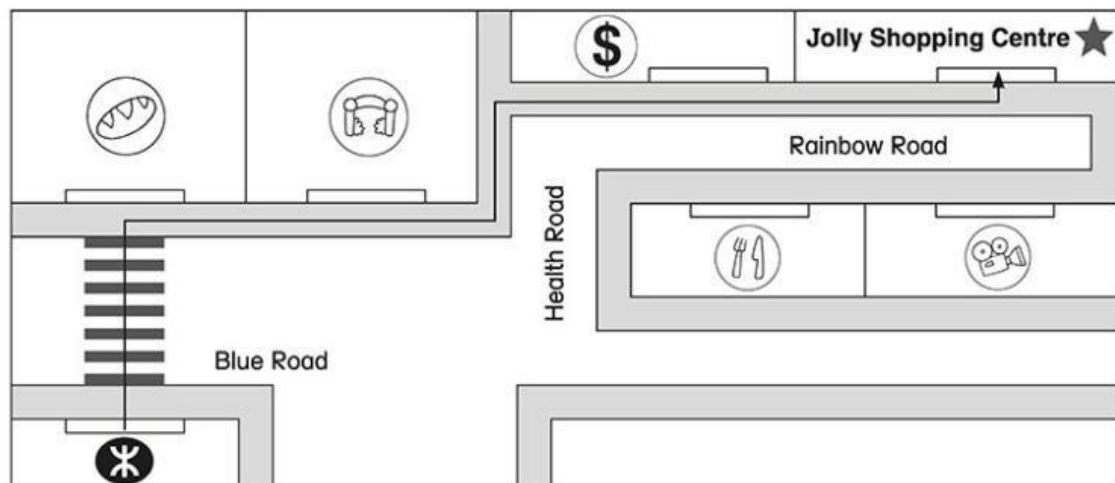
We don't use personal pronouns when we give directions.

~~You~~ walk across the road.

Walk across the road.

Practice

Read the poster and complete the directions. Follow the example.

**Jolly Shopping Centre**  
*Grand Opening*


① Go ② \_\_\_\_\_ the MTR station. Walk ③ \_\_\_\_\_ Blue Road.  
 Turn ④ \_\_\_\_\_. ⑤ \_\_\_\_\_ straight ahead. ⑥ \_\_\_\_\_  
 ⑦ \_\_\_\_\_ into Health Road. ⑧ \_\_\_\_\_ ⑨ \_\_\_\_\_  
 ⑩ \_\_\_\_\_ ⑪ \_\_\_\_\_ into Rainbow Road. Jolly Shopping Centre is at  
 ⑫ \_\_\_\_\_ the road. It is ⑬ \_\_\_\_\_ left.