

3 Write the word or words from the box to complete each sentence. Use each item once only.

roof	stored	lockers	racks	security-conscious
leave	cover	tickets	baggage	machine

- If you worry about safety, you are _____.
- Bikes are often _____ on bike _____, which are metal bars that hold bikes upright.
- You can buy train _____ from a ticket office or _____.
- _____ are locked cupboards used to store _____ or maybe bikes.
- It's a good idea to _____ your bike under _____, which means leaving it in a place with a _____.

TIP

A useful method for learning new vocabulary items is to write a sentence for each word. This way, you can remember how to use the word in context.

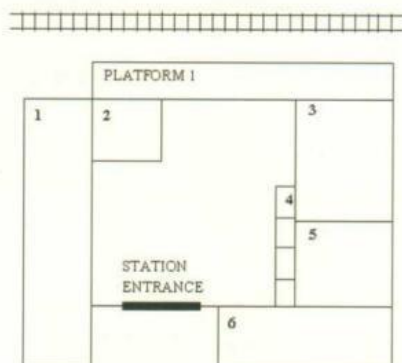
Week 9:
Listening Practice

4 Choose the options that you hear.

- He is waiting by the (entrance, exit) to the International Centre.
- These lockers are for storing (bikes, baggage).
- She wants to know if there is a safe (locking, parking) area for her bike.
- The station has video (surveillance, security).
- I'm going to park my bike outside that (mall, store).

Listening 1

Label the plan below. Choose SIX answers from the box and write the correct letters, A-I, next to questions 1-6.

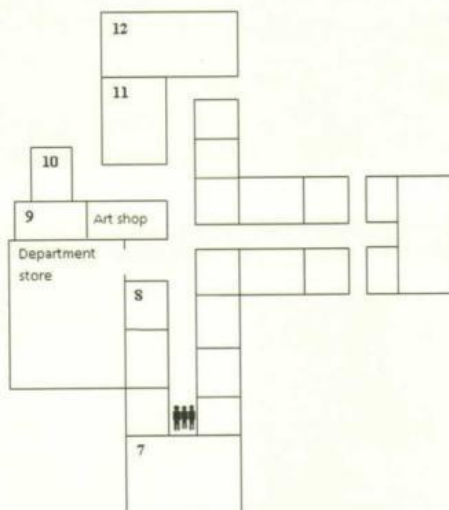


- A café
- B information desk
- C baggage lockers
- D open-air bike parking
- E bike lockers
- F covered bike parking
- G ticket office
- H ticket machines
- I tourist information

- | | |
|----------|----------|
| 1. _____ | 4. _____ |
| 2. _____ | 5. _____ |
| 3. _____ | 6. _____ |

Listening 2

Label the plan below. Choose SIX answers from the box and write the correct letters, A-I, next to questions 7-12.



- A jewellery store
- B supermarket
- C menswear store
- D Music-Music store
- E baby clothes store
- F electronics store
- G food court
- H video store
- I bookstore

- | | |
|----------|-----------|
| 7. _____ | 10. _____ |
| 8. _____ | 11. _____ |
| 9. _____ | 12. _____ |