

LKPD

Location of Facilities

Giving direction to facilities in the hotel

The travel desk is on the ground floor

1

PRESENTATION

Do you know what these directions mean?
Work in groups and make a simple drawing of each one.

***turn right, turn left, go up,
go down, next to, opposite***

2

LISTENING AND PRONUNCIATION

Look at the plan of the hotel. Some guests are asking for directions in the hotel. Listen to the conversations and write down the place each guest is looking for.

Guest 1 _____

Guest 2 _____

Guest 3 _____

Guest 4 _____

Guest 5 _____

3

Listen again and label these three places on the hotel plan!

bar, business centre, swimming pool

4

Being clear and polite

Listen to these sentences and repeat them.

The gift shop is in the basement.

When you go out of the lift, turn right.

It's in the main lobby, opposite the reception desk.

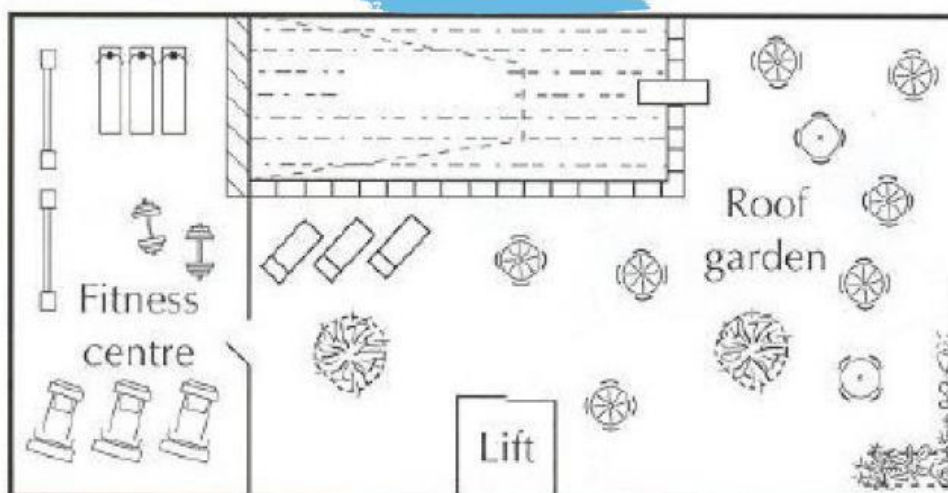
It's inside the restaurant on the ground floor.

Go down to the ground floor.

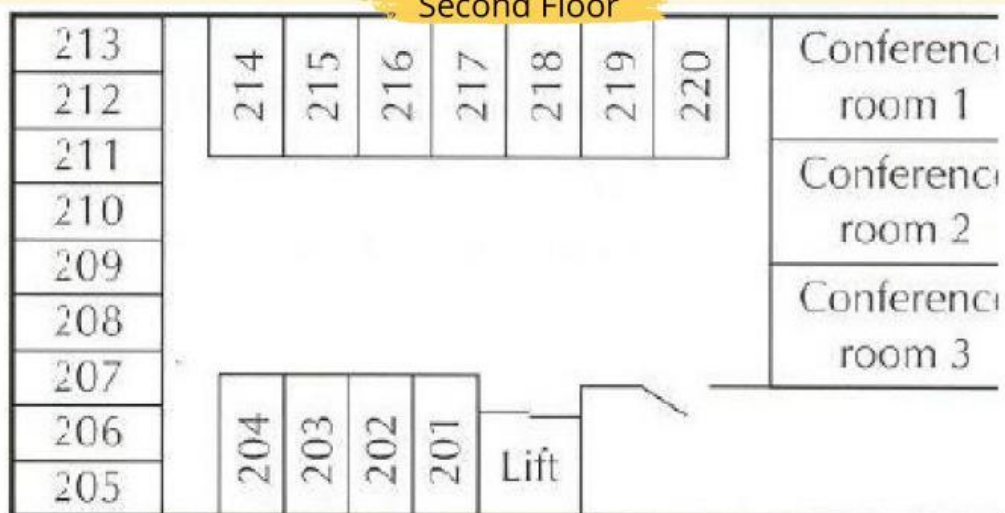
As you come out of the lift, it's on your left.

Out of the lift, turn right, and it's next to the conference rooms.

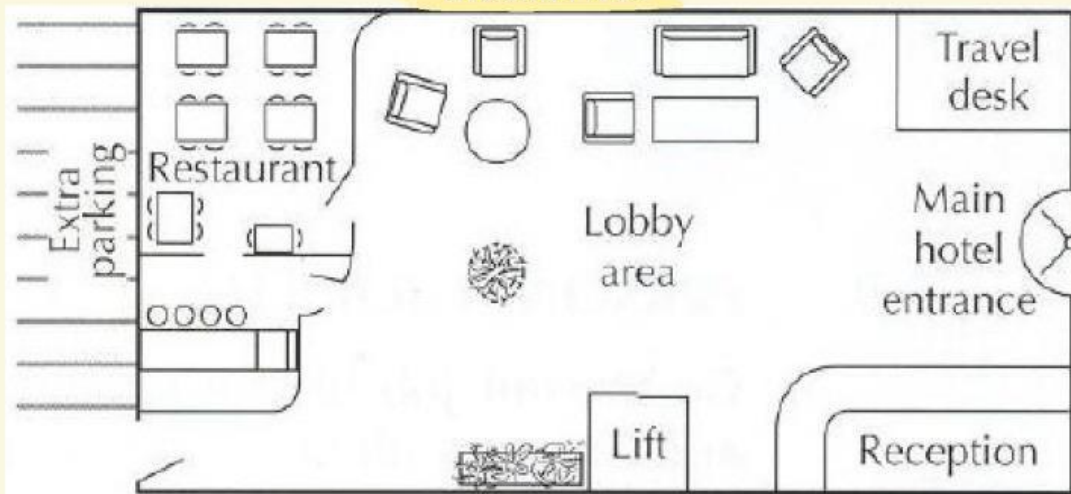
Top Floor



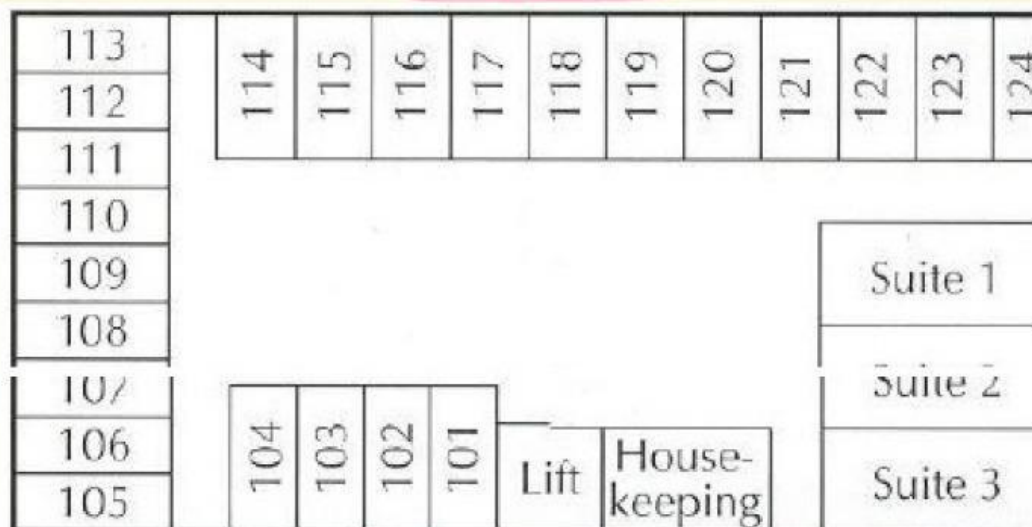
Second Floor



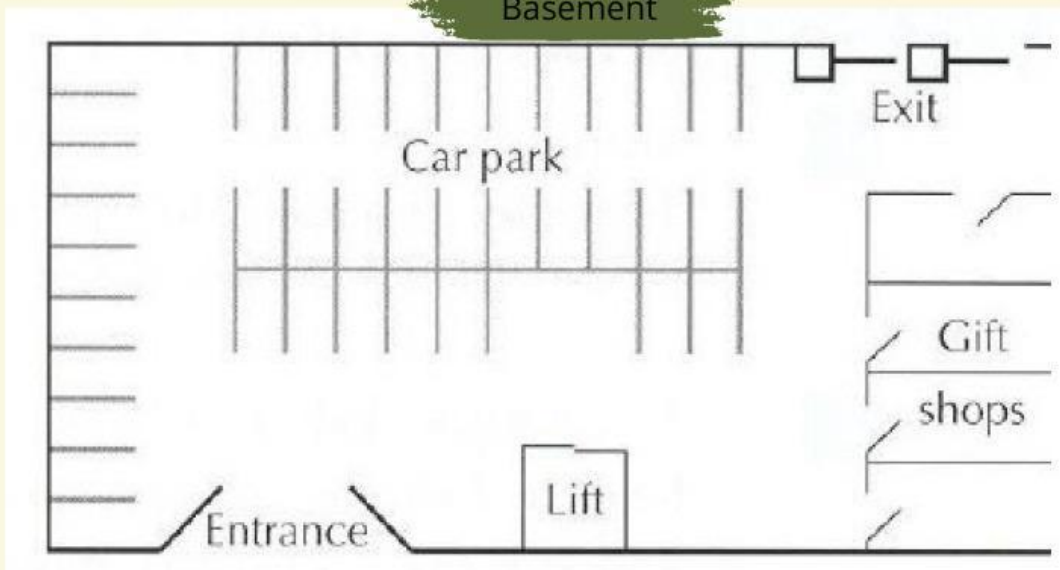
Ground Floor



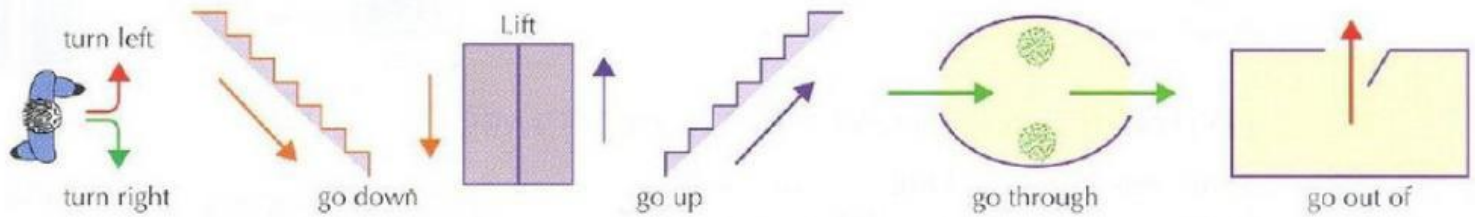
First Floor



Basement



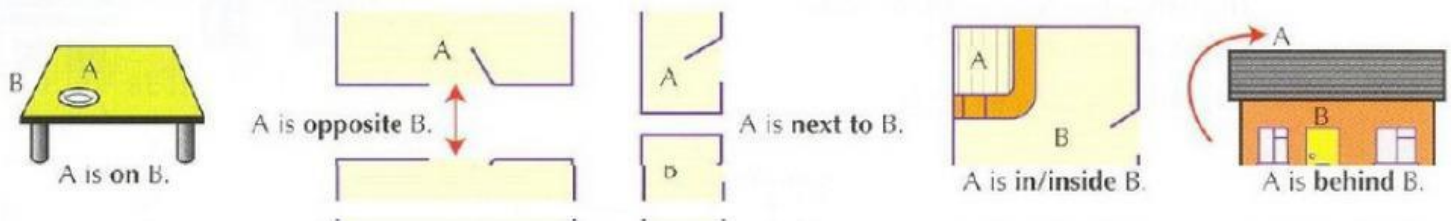
Verbs of direction The employee gives directions using these verbs:



5 Look at the plan of the hotel. Complete these sentences.

- To get to the gift shops, go out of the lift and _____.
- The restaurant is on the ground floor; _____ the lobby and it's at the end.
- To get to the business centre, _____ to the second floor, and as you _____ the lift it's on your right.
- From your room, go _____ restaurant near the lobby, and the bar is inside the restaurant.
- The fitness centre is on the top floor; as and you come out of the lift, _____ you'll see the fitness centre next to the pool.

Prepositions of place Look at the plan of the hotel. Complete the sentences below.



- 6**
- The car park is _____ the basement.
 - The travel desk is _____ reception, in the lobby.
 - All the conference rooms are _____ the second floor.
 - The pool is on the top floor, _____ the fitness centre.
 - The bar is _____ the restaurant.
 - You can also park just _____ the hotel.

SPEAKING PRACTICE In pairs

- Student A: You are the guest. Go to picture A and study the plan of the hotel in Speaking practice. There are no services marked on it. Ask your partner where the services are and write their position on your plan.
- Student B: You are the employee. Go to picture B and study the plan of the hotel in Speaking practice. Tell your partner where the services are.

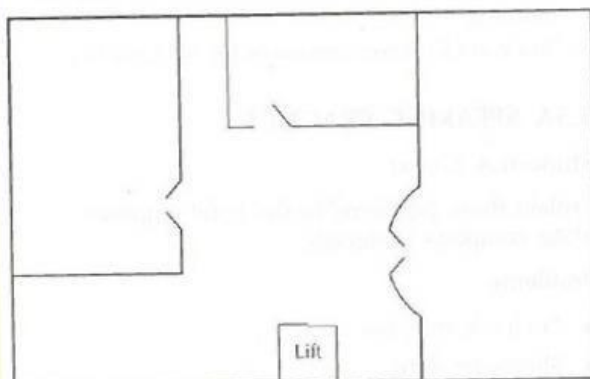
Check your answers. Change roles.

6.5A SPEAKING PRACTICE

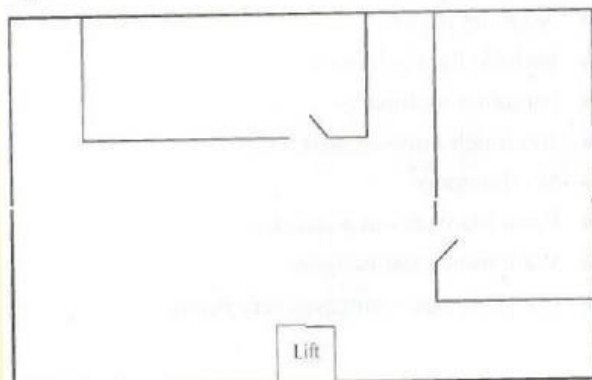
Student A *Guest*

Ask the hotel employee for directions to the following services and write their position on the hotel plan.

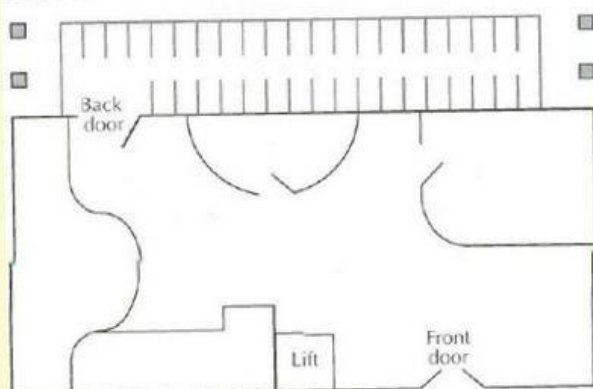
business centre gym + fitness centre
swimming pool car park bar restaurant
reception travel desk beauty salon gift shop



Top floor



First floor



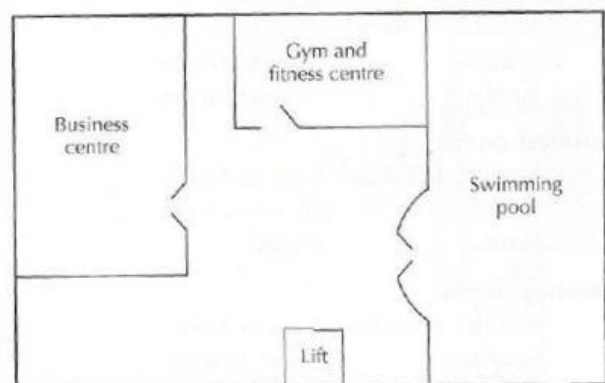
Ground floor

6.5B SPEAKING PRACTICE

Student B *Employee*

The guest has a plan of the hotel but the services are not marked on it. Answer the guest's questions about the location of these services in the hotel.

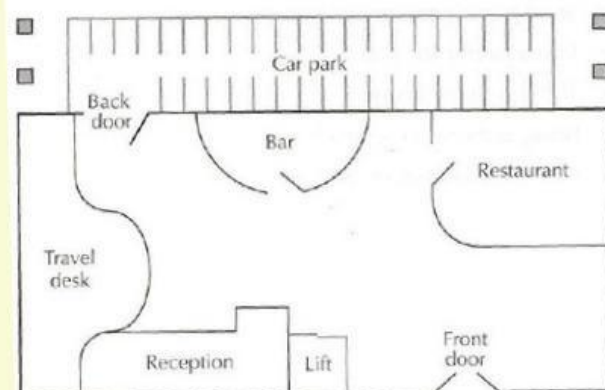
business centre gym + fitness centre
swimming pool car park bar restaurant
reception travel desk beauty salon gift shop



Top floor



First floor



Ground floor