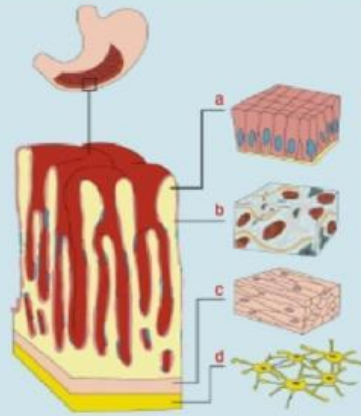


An organ like the stomach is composed of tissues; within an organ, tissues are organized in specific ways. Identify each tissue and fill in the boxes with the correct function.



Tissue	Function
a.	
b.	
c.	
d.	

- Nervous tissue
 - Epithelial tissue
 - Muscle tissue
 - Connective tissue
- Lining, transport, secretion and absorption
 - Movement
 - Information processing, communication and control
 - Support, strength and elasticity