



SCIENCE REVIEW

Grade 8

Choose the correct answer:

1- What is the oldest layer formed in the sedimentary rock shown in the adjacent figure?

- A. Layer 1
- B. Layer 2
- C. Layer 3
- D. Layer 4



2- What is the youngest layer formed in the sedimentary rock shown in the adjacent figure?

- A. Layer 1
- B. Layer 2
- C. Layer 3
- D. Layer 4



3- Which layer is older than layer 3?

- A. Layers 1 and 3
- B. Layers 1 and 2
- C. Layer 4 only
- D. Layer 1 only



4- Any method of determining whether an object is older or younger than other objects is called....

- A. absolute dating
- B. relative dating
- C. radiometric dating
- D. all the above

5- Any method of determining the age of an object in years is called....

- A. absolute dating
- B. relative dating
- C. radiometric dating
- D. all the above

6- What type of rocks can scientists determine their absolute age?

- A. Sedimentary rocks
- B. Metamorphic rocks
- C. Igneous rocks
- D. Any type of rocks

7- In one region, when the birth rate is greater than the death rate, the population will...

- A. increase.
- B. decrease.
- C. stay the same.
- D. decrease then increase.



8- In one region, when the death rate is greater than the birth rate, the population will...

- A. increase.
- B. decrease.
- C. stay the same.
- D. decrease then increase.



9- Which of the following causes a decrease in population?

- A. Increase in birth rate
- B. Decrease in death rate
- C. Improvements in medical care
- D. High immigration out of the area



10-Which of the following causes an increase in population?

- A. Decrease in birth rate
- B. Decrease in death rate
- C. Bad medical care
- D. High immigration out of the area



11-The red layer of the Grand Canyon pointed at in this picture is 340 million years old. Which statement about nearby layers is true?

- A. The layers below this layer are older than 340 million years old.
- B. The layers above this layer are older than 340 million years old.
- C. The layers below this layer are younger than 340 million years old.
- D. The Layers above this layer are in the same age.



12-A group of individuals of the same species living in the same place at the same time is called ...

- A. Ecosystem
- B. Population
- C. Group
- D. Biodiversity

Answer the following questions:

1- Look at each image. Use the words from the word bank to label each fossil with the name of the environment in which it likely formed.

a Lake – a tropical forest – a grassland



- 2- Write **A** next to statements that describe absolute age, and **R** next to those that describe relative age.

	I am 14 years old
	I am younger than my brother
	The boy's school is older than the girl's school

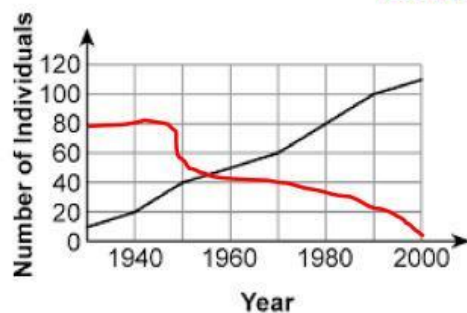
- 3- Classify the following resources as renewable or non-renewable in the table below.

Fossil fuels – Wind – Water – Copper – Solar energy – Coal

Renewable resources	Non-renewable resources

- 4- Use the following words to describe the population growth in the graph.

Growing – Shrinking

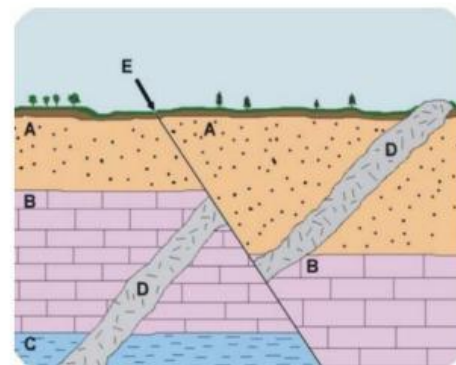


The black line shows
in population size

The red line shows
in population size

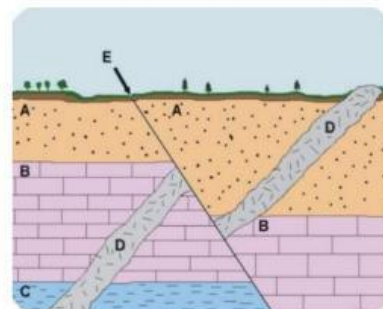
- 5- The diagram shows rock layers that are cut by a fault and one body of rock (Rock D) What are the relative ages of the features in order of oldest to youngest?

The oldest	
The youngest	E



- 6- The diagram shows rock layers that are cut by a fault and one body of rock (Rock D) What are the relative ages of the features in order of youngest to oldest?

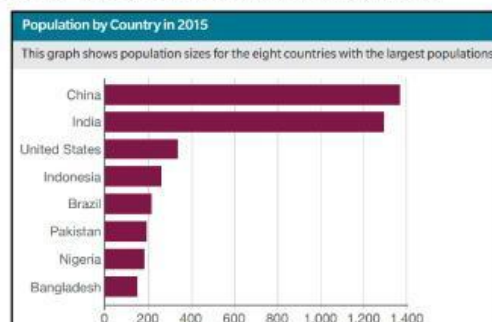
The youngest  The oldest	



- 7- Compare between the population in China and the population in Nigeria.

grater - smaller

China population is
than Nigeria population.



- 8- Use the table below to calculate per capita consumption of water in the UAE in 2020.

Population size	Total tomato use kg/day
11,000,000	3,000,000

Per capita consumption= total of resources / population size

= / =

- 9- The graph below shows the change in population according to the (birth rate and death rate) in one region. use the graph to answer the following question.

Birth rate - death rate

What is the reason for the **decrease in population size** at year 2?

in year 2 the
is less that the
rate

