

2 Land and Sea

Lesson 1 Animals and Insects

A Listen, point, and say. 



hippopotamus



gorilla



panda



butterfly



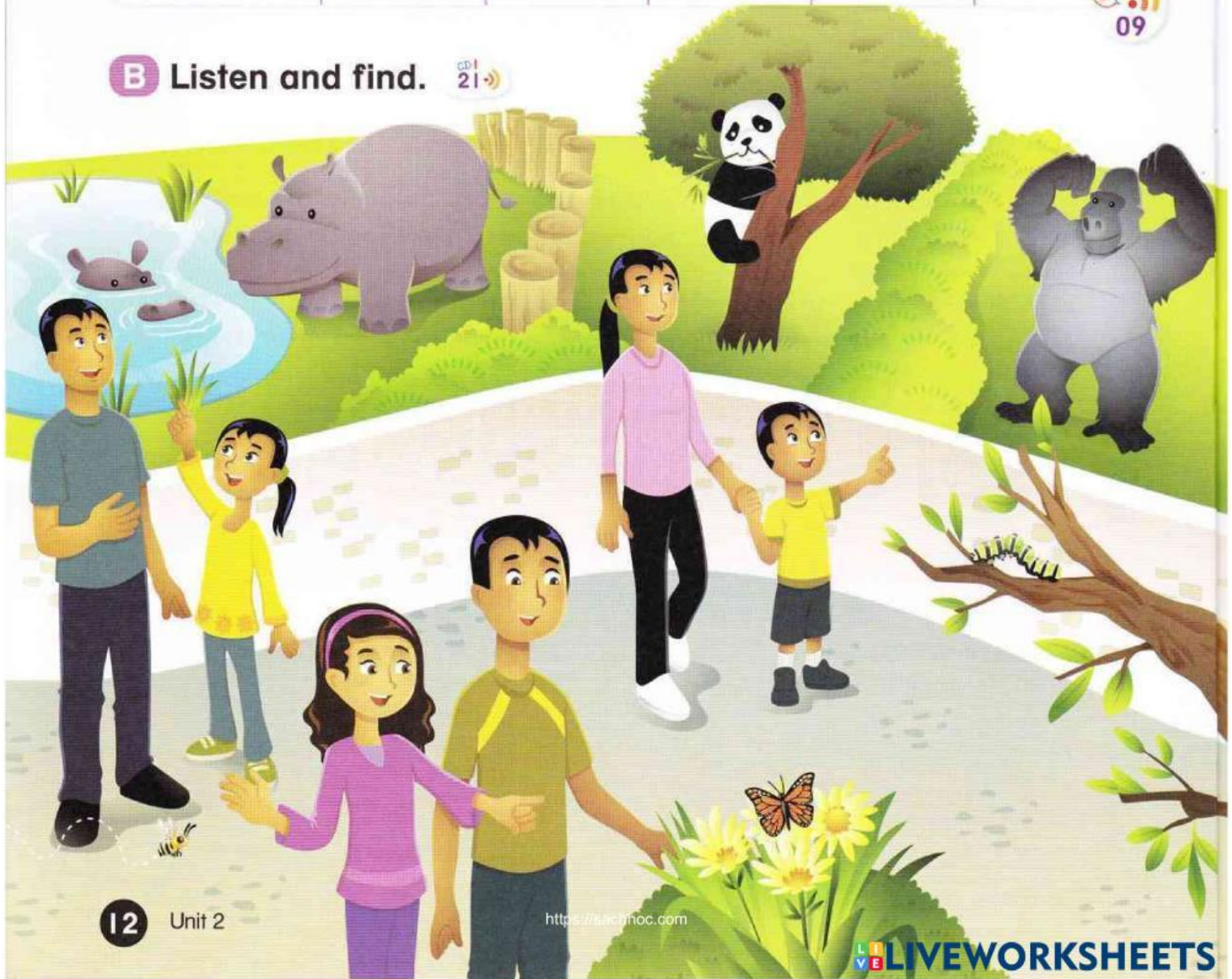
caterpillar



bee



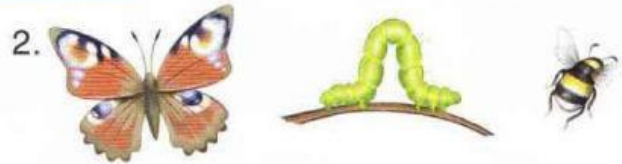
B Listen and find. 



C Listen and say. Then practice. CD 22

The **hippopotamus** is **bigger** than the **panda**.
The **hippopotamus** is the **biggest**.

big → bigger → biggest



D Listen, ask, and answer. Then practice. CD 23

Which one is the **smallest**? The **bee** is the **smallest**.

small → smaller → smallest

1.



bee

spider

butterfly

2.



monkey

hippopotamus

elephant

3.



dog

cow

chicken

Who's the tallest student in your class?



E Look at **B**. Point, ask, and answer. CD 23

Which one is the biggest?

The hippopotamus is the biggest.