






Name: _____ Date: _____

Worksheet: All About Joints

1. The pictures below show the different types of joints in the human body. Match each picture to the correct joint type by typing the correct letter for the type of joint shown on the line next to each picture. [5]

_____ 1.		_____ 2.		_____ 3.		a. ball-and-socket joint
_____ 4.		_____ 5.				b. hinge joint
						c. pivot joint
						d. fixed joint
						e. gliding joint

2. For each joint below, choose from the drop down menu, the type of joint that is found there. [5]

- a. Fingers knuckles _____
- b. Elbow _____
- c. Shoulder _____
- d. Knee _____
- e. Wrist _____

3. What is a joint? [1]

4. How is a movable joint different from an immovable joint? [2]

5. Match the phrases in Column A with the correct answer from Column B. Type the correct letter on the line. Some responses are used more than once. [7]

COLUMN A

COLUMN B

- | | | |
|---------|--|------------------|
| 1 _____ | Tissue that holds two bones together | A Cartilage |
| 2 _____ | Helps the bones in a joint to move smoothly | B Ligament |
| 3 _____ | Tissue that attaches muscles to bones | C Marrow |
| 4 _____ | Rubbery material that covers the ends of bones | D Synovial Fluid |
| 5 _____ | Lubricates the bones in a joint | E Tendon |
| 6 _____ | Soft tissue inside bones that produces blood cells | |
| 7 _____ | Acts as a cushion to the bones in a joint | |

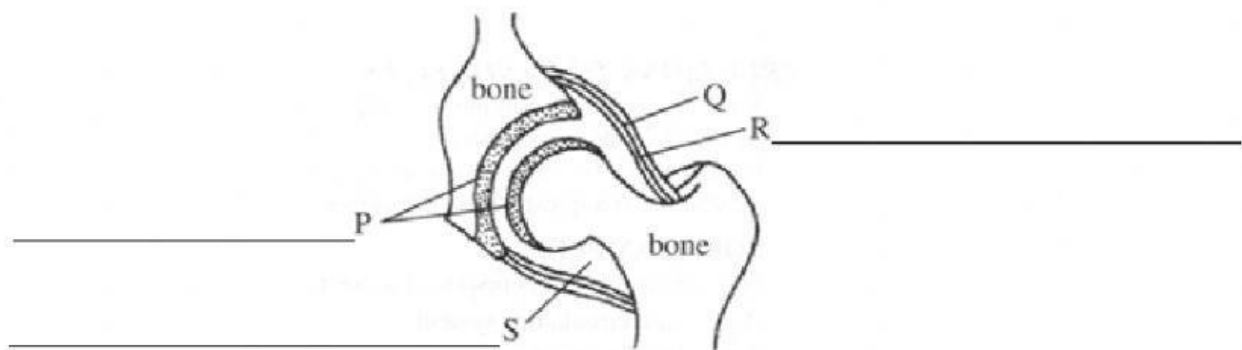
6. The diagram below shows a type of joint in the human body.

Label the diagram below by dragging the words to the correct line. Choose from the words below. [3]

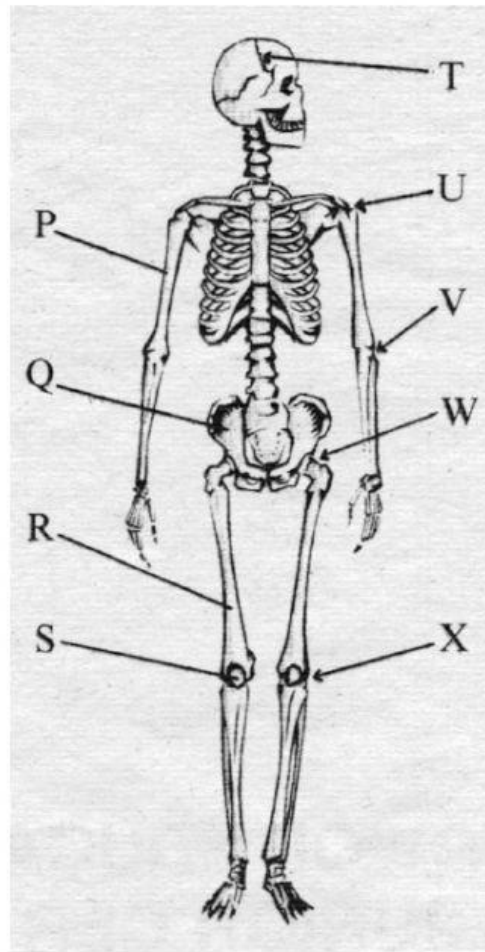
Ligament

Synovial fluid

Cartilage



7. This diagram represents the human skeletal system seen from the front. Letters P, Q, R and S are pointing to bones of the skeletal system. Letters T, U, V, W and X are pointing to joints of the skeletal system.



- a. Name the bones (*scientific names only*) labeled with these letters: [4]

P _____ Q _____

R _____ S _____

- b. What **TWO** letters on the diagram point to a hinge joint? _____ [1]
- c. Which letter points to an immovable joint? _____ [1]
- d. What are **THREE** important functions of the human skeleton? [3]

(i) _____

(ii) _____

(iii) _____