

The background is a collage of various school-related items including open books, a pencil, a paper airplane, a ruler, and a red pushpin. On the right side, there is a black silhouette of a man and a woman in period clothing, likely Romeo and Juliet, standing and facing each other. The main title is written in a large, stylized font with the letters 'I', 'L', and 'M' in gold and the words 'nteractive', 'earning', and 'aterial' in a black script font.

Interactive Learning Material

Grade 9 - English

Elements of a Play
focusing on the Character, Plot & Theme

Romeo and Juliet

by:

Ivy Marie Z. Seville

 **LIVEWORKSHEETS**

To the students

Welcome, students, to an engaging journey through the timeless tale of love and tragedy in William Shakespeare's *Romeo and Juliet*. In this Interactive Learning Material (ILM), we will embark on a delightful exploration of the elements of plot of this timeless love story.

Romeo and Juliet, set against the backdrop of feuding families in Verona, Italy, has captivated audiences for centuries with its rich characters, emotive language, and dramatic narrative. As Grade 9 students, delving into the intricacies of plot structure will not only deepen your understanding of Shakespeare's masterpiece but also sharpen your critical thinking skills and literary analysis abilities.

Throughout this ILM, you will put on the hat of a Literary Scholar who will dissect the plot of *Romeo and Juliet* into its fundamental components: exposition, rising action, climax, falling action, and denouement. Each element serves as a building block in the construction of the play's narrative arc, guiding us through the unfolding drama and tragedy.

The primary aim of this Strategic Intervention Material is in accordance with the Grade 9 English Literature Learning Competencies within the K-12 Program, focusing specifically on *Romeo and Juliet*. This material breaks down the objectives into specific learning goals.

Competency:

Determine the relevance and the truthfulness of the ideas presented in the material viewed.

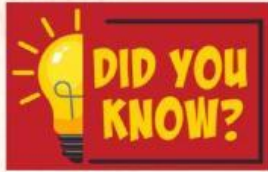
Objectives:

- I. Infer thoughts, feelings and emotions on relevance and truthfulness in relation to the elements of a play focusing on Characters, Plot & Theme;
- II. Identify significant characters in *Romeo and Juliet*.
- III. Create a plot diagram based on the story *Romeo and Juliet*.
- IV. Develop accountability in making the right decision through choosing a set of universally recognized moral principles and ethical standards that promote fairness, integrity, and respect for others.





In this ILM, the “pre-test and post-test” part means taking a test before and after learning something to see what you know and how much you’ve learned.



This part of the ILM serves to provide interesting and relevant facts or information that supplement your learning. Make sure to read and grasp the content in order to have a fruitful learning experience.



The purpose of the quiz section is to evaluate your comprehension, retention, and mastery of the material. It provides you with an opportunity to test your knowledge, identify areas of strength and weakness, and receive feedback on your progress.



This is your exercise cue. The purpose of the exercise section is to provide you with opportunities to actively engage with the material, practice their skills, and demonstrate your understanding.



Before proceeding to the next part of the material, students are required to have either watched the movie adaptation of the play “Romeo and Juliet” using this link: <https://tinyurl.com/Grade9RomeoandJuliet> or read the excerpt in the book **A Journey through Anglo-American Literature Learner’s Material on pages 327 to 338**. This prerequisite ensures that students have a foundational understanding of the storyline, characters, and themes presented in the play. This comprehension is vital for effective participation and engagement in subsequent activities and discussions. Please ensure that you have completed this requirement before continuing with the lesson.

EXAM



PRE-TEST

Read each question carefully and select the best answer by clicking the corresponding letter (A, B, C, or D) before submitting your responses.

1. Who is Romeo's first love interest at the beginning of the play?

- A) Juliet B) Rosaline C) Mercutio D) Tybalt

2. What family does Juliet belong to?

- A) Capulet B) Montague C) Verona D) Benvolio

3. Which character secretly marries Romeo and Juliet?

- A) Friar Lawrence C) Prince Escalus
B) Tybalt D) Nurse

4. How do the themes of love and hate intersect in "Romeo and Juliet"?

- A) Love triumphs over hate in the end.
B) Love and hate are mutually exclusive throughout the play.
C) Love and hate are intertwined and contribute to the tragic outcome.
D) Love and hate have no significant impact on the characters' actions.

5. What role does fate play in the lives of Romeo and Juliet?

- A) Fate determines their tragic fate, despite their efforts to defy it.
B) Fate has no influence on their lives; they control their own destinies.
C) Fate only affects minor characters, not Romeo and Juliet.
D) Fate is a minor theme in the play; it does not significantly impact the plot.

Arrange the events in the plot of "Romeo and Juliet" by numbering them from 1 to 5 according to their chronological order, with 1 being the earliest event and 5 being the latest. Once you have arranged the events, provide your answers in the space provided.

PRE-TEST

- ____ 1. Romeo, unaware of Juliet's plan, believes she is truly dead and takes his life beside her. The tragic deaths of Romeo and Juliet lead to the reconciliation between their feuding families.
- ____ 2. Tybalt challenges Romeo to a duel, resulting in Mercutio's death.
- ____ 3. Romeo and Juliet meet at a party and instantly fall in love oblivious to the long-standing feud between their families.
- ____ 4. Romeo avenges Mercutio's death by killing Tybalt and is banished from Verona.
- ____ 5. They marry secretly, defying their feuding families.



William Shakespeare

Birth Date: Baptized on April 26, 1564

Birthplace: Stratford-upon-Avon, England

Death Date: April 23, 1616

Occupation: Playwright, poet, actor

Spouse: Anne Hathaway (married in 1582)

Children: Susanna, Hamnet, and Judith (twins)

Known For:

Prolific playwright and poet of the English Renaissance, widely regarded as one of the greatest writers in the English language

Notable Works:

Plays such as "Romeo and Juliet," "Hamlet," "Macbeth," "Othello," and "King Lear," as well as his collection of 154 sonnets and various other poems and verses.



Romeo and Juliet

"Romeo and Juliet", one of William Shakespeare's most renowned works, epitomizes the timeless themes of love, tragedy, and fate. Set in Verona, Italy, the play portrays the ill-fated romance between the young heirs of feuding families, Romeo and Juliet. Shakespeare, a luminary of English literature, composed his masterpieces during the Renaissance era, a period marked by profound cultural, artistic, and intellectual revival in Europe. Emerging in the late 15th century, the Renaissance celebrated humanism, individualism, and a renewed interest in classical Greek and Roman literature, which deeply influenced Shakespeare's writings. Through his eloquent prose and profound insights into the human condition, Shakespeare not only captured the essence of his time but also transcended it, leaving an indelible mark on literature for centuries to come.



Let's recall the details of what we read. Select the best answer by clicking the letter.

1. In which city was William Shakespeare born?

- A) London B) Stratford-upon-Avon C) Verona D) Florence

2. What occupation did Shakespeare primarily pursue during his lifetime?

- A) Painter C) Merchant
B) Playwright, poet, and actor D) Soldier

3. Which of the following is NOT one of Shakespeare's notable works?

- A) Romeo and Juliet B) Hamlet C) Macbeth D) Pride and Prejudice

4. How many sonnets are there in Shakespeare's collection?

- A) 100 B) 120 C) 154 D) 200

5. Which of the following statements best describes Shakespeare's contribution to literature?

- A) He was only known for writing tragedies.
B) He mainly wrote plays in French.
C) His works had no impact on later generations.
D) He is widely regarded as one of the greatest writers in the English language.

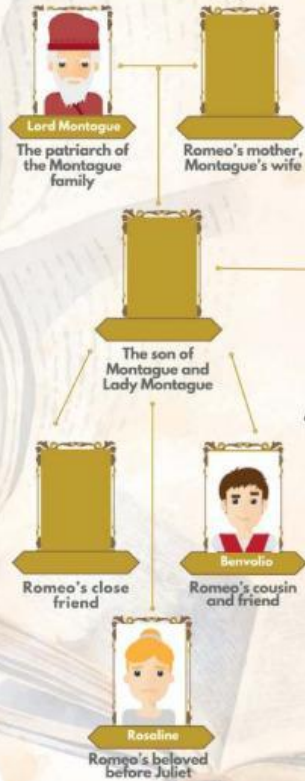


Characters in a play serve as essential elements, driving the plot forward, providing insights into central conflicts, and representing various perspectives and themes.

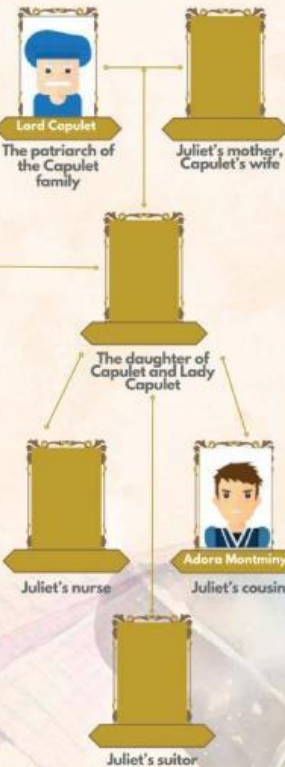


Analyze the Character Tree below. Supply the missing picture by dragging the pictures to its corresponding box.

The Montagues



The Capulets



Drag these pictures to the corresponding box on the left.



Other Characters



Romeo & Juliet
Character Tree



A plot refers to the sequence of events that make up the storyline of a narrative, including the exposition, rising action, climax, falling action, and denouement, which together create a cohesive and meaningful narrative structure.



Write the following parts of the plot diagram. Refer to the definition provided.

The turning point of the story, where the conflict reaches its peak.

The events that occur after the climax, leading towards the resolution.

The series of events that build tension and lead to the climax of the story.

The introductory part of the plot where characters, setting, and basic situation are introduced.

The final part of the plot where loose ends are tied up and the story concludes.

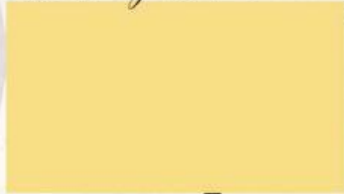


Drag the pictures on the right to their corresponding areas on the plot diagram on the left to complete the storyline sequence of Romeo and Juliet.

Climax



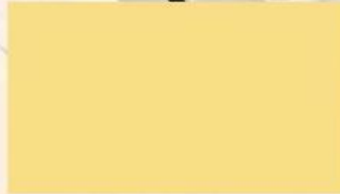
Rising Action



Falling Action



Denouement



Exposition

*photos are snipped from the 1986 movie adaptation of the film Romeo and Juliet





Arrange the jumbled letters to form a word by dragging the letters to the designated box to form the correct word. Use the meaning as a clue to get the correct answer.

1. the degree to which something is related or useful to what is happening or being talked about

R
E L V C E A N E

2. pertains to the authenticity, honesty, and integrity of the work's portrayal of characters, events, and themes

T
S R U H U L N E T S F

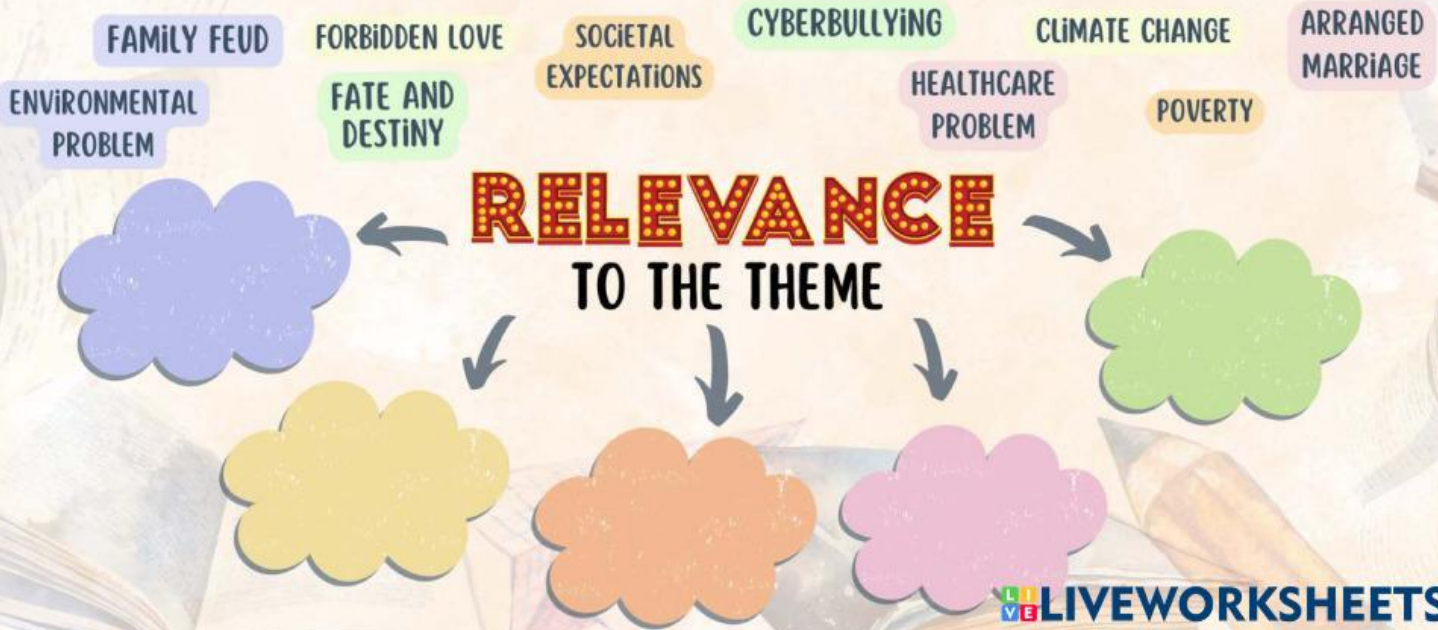


In literature, **relevance** refers to the significance or applicability of a work to the current context, societal issues, or human experiences. A relevant piece of literature resonates with readers by addressing universal themes, concerns, or emotions that are timeless and relatable across different cultures and time periods.

On the other hand, **truthfulness** in literature pertains to the authenticity, honesty, and integrity of the work's portrayal of characters, events, and themes. A truthful piece of literature reflects the complexities of human nature, accurately depicting the nuances of emotions, relationships, and societal dynamics without distortion or bias.



Using a mind map, identify phrases that are relevant to the theme in the play Romeo and Juliet.
Drag the words to its corresponding cloud.





On the other hand, truthfulness in literature pertains to the authenticity, honesty, and integrity of the work's portrayal of characters, events, and themes. A truthful piece of literature reflects the complexities of human nature, accurately depicting the nuances of emotions, relationships, and societal dynamics without distortion or bias.



Match each principle or ethical standard with its corresponding description or example based on the play "Romeo and Juliet" by dragging and dropping.

____ **1. Fairness**

____ **2. Integrity**

____ **3. Respect for others**

____ **4. Accountability**

____ **5. Compassion**

A. Taking responsibility for one's actions and their consequences.

B. Showing empathy, kindness, and understanding towards others' struggles and challenges.

C. Valuing and considering the thoughts, feelings, and rights of others in decision-making processes.

D. Treating all individuals equally and impartially, regardless of social status or background.

E. Acting with honesty, sincerity, and moral uprightness in all situations.



Reflect on the following questions about the themes in "Romeo and Juliet." Write down your thoughts and insights below. Consider how the themes relate to your own experiences and the world around you. After reflecting, share your reflections with a classmate or in a group discussion to deepen your understanding and gain new perspectives.

1. How do the expectations of Romeo and Juliet's families about their relationship compare to what we see in families today, and what can we learn from this about love and family?

2. What lessons can we learn from the impulsive actions of Romeo and Juliet and how can we apply them to our own lives when facing difficult decisions?

EXAM

POST-TEST

Read each question carefully and select the best answer by clicking the corresponding letter (A, B, C, or D) before submitting your responses.

1. Who is Romeo's first love interest at the beginning of the play?

- A) Juliet B) Rosaline C) Mercutio D) Tybalt

2. What family does Juliet belong to?

- A) Capulet B) Montague C) Verona D) Benvolio

3. Which character secretly marries Romeo and Juliet?

- A) Friar Lawrence C) Prince Escalus
B) Tybalt D) Nurse

4. How do the themes of love and hate intersect in "Romeo and Juliet"?

- A) Love triumphs over hate in the end.
B) Love and hate are mutually exclusive throughout the play.
C) Love and hate are intertwined and contribute to the tragic outcome.
D) Love and hate have no significant impact on the characters' actions.

5. What role does fate play in the lives of Romeo and Juliet?

- A) Fate determines their tragic fate, despite their efforts to defy it.
B) Fate has no influence on their lives; they control their own destinies.
C) Fate only affects minor characters, not Romeo and Juliet.
D) Fate is a minor theme in the play; it does not significantly impact the plot.