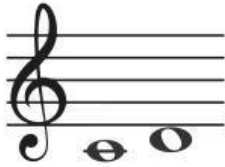
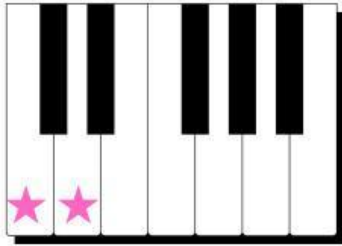
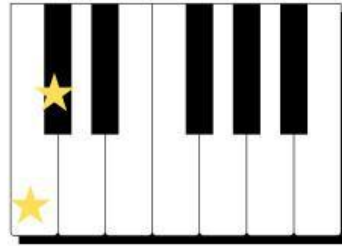


Major and Minor Interval (2nd)

Major 2nd = 1 Whole Step

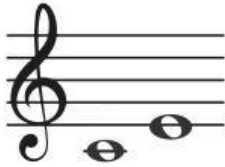


Minor 2nd = 1 half step

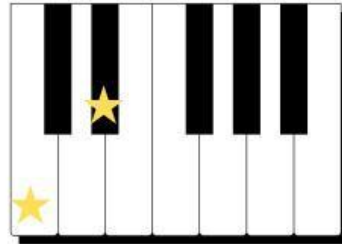


Major and Minor Interval (3rd)

Major 3rd = 2 Whole Step



Minor 3rd = 1 whole step + 1 half step



Identify the interval!

If Major, write it **M2** or **M3**

If Minor, write it **m2** or **m3**



