

BDY636: GERMPLASM AND PLANT TISSUE CULTURE

Question 1:

Arrange the correct in vitro plant regeneration methods and phases. Click "check my answers" and then refer to marks given on the top left of worksheet.

Morphogenesis proceeds independently of the exogenous phytohormones

Somatic embryos are converted into viable plantlets

Embryogenic masses initiate from vegetative cells or tissues

Cells become competent

Answer:

1.

2.

3.

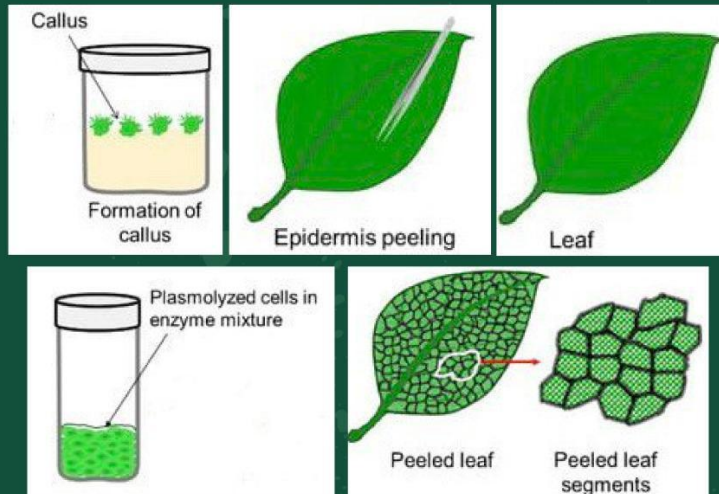
4.



BDY636: GERMLASM AND PLANT TISSUE CULTURE

Question 2:

Arrange the correct stages in the protoplast culture.
Click "check my answers" and then refer to marks given on the top left of worksheet.



Answer:

