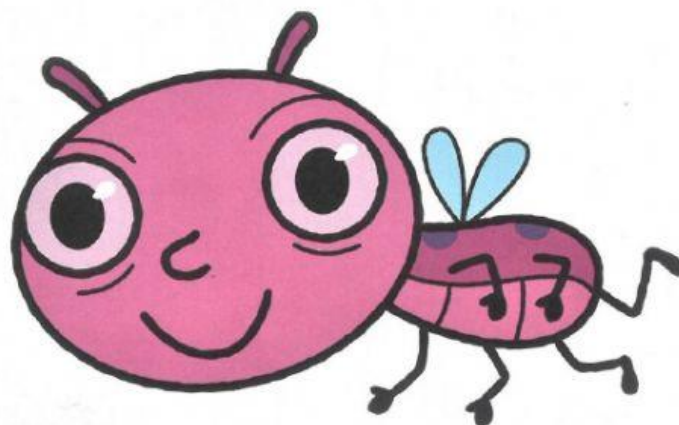


Delphin Readers Level One

OXFORD

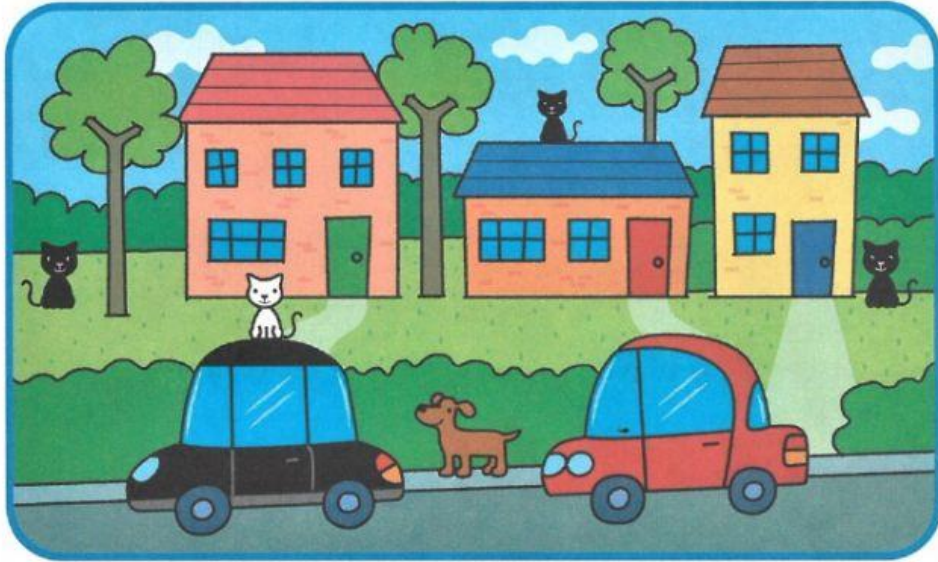
Meet Molly

Circle **yes** or **no**.



- 1 It has got one eye. **yes** **no**
- 2 It has got two eyes. **yes** **no**
- 3 It has got one mouth. **yes** **no**
- 4 It has got one foot. **yes** **no**
- 5 It has got eight feet. **yes** **no**
- 6 It has got six legs. **yes** **no**

Write the number.





- ① There is green door.
- ② There are houses.
- ③ There is dog.
- ④ There are cats.
- ⑤ There is red car.
- ⑥ There are trees.


CHOOSE THE CORRECT WORD

① **These** is a dog. 

② **These** are cats. 

③ **These** are eyes. 

④ **These** is my book. 

⑤ **These** are my dolls. 

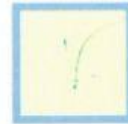
⑥ **These** is my car. 

WRITE TRUE OR FALSE

① Joe is a girl.



② Joe has got two eyes.



③ The dog is red.



④ Molly does not like Joe.



⑤ Molly is a girl.



⑥ The dog has got four legs.



⑦ The insect has got two mouths.



What page?

X

- ① Molly draws a door.
- ② Molly draws Joe.
- ③ Molly draws a hand.
- ④ Molly draws a dog.
- ⑤ Molly draws two legs.
- ⑥ Molly draws two feet.
- ⑦ Molly draws five fingers.

6

