

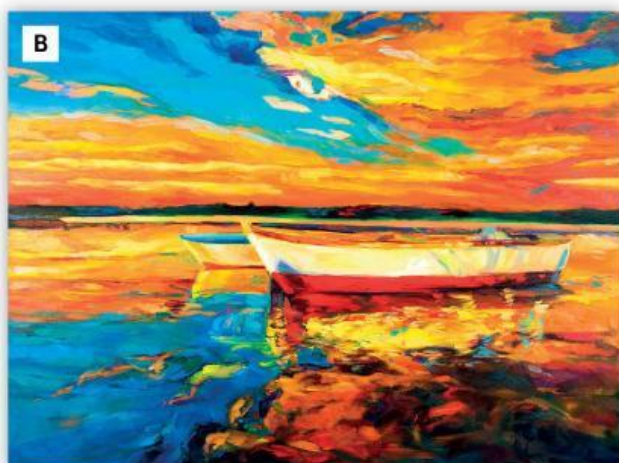
## INTERMEDIATE UNIT 1

**1A** Look at the photos. Which of the styles of art in the box does each one show?

abstract cubism impressionism landscape  
pop art portrait realism

**B** Work in pairs. Discuss the questions.

- 1 What do you know about the styles of art in Exercise 1A?
- 2 Which of the styles do you like the most?
- 3 What other types of art do you like?



**2A** Watch the DVD and number the topics in the order they are mentioned.

- a) How Sargy Mann uses Blu-Tack and cardboard tubes.
- b) How he went blind.
- c) How he uses his experience to paint.
- d) Who buys his paintings.
- e) The first time he painted in total blindness.

**B** Work in pairs. Can you remember what was said about each topic in Exercise 2A?

**3A** Decide if the statements are true (T) or false (F).

- 1 Sargy Mann lives in a small town.
- 2 He's been blind for twenty-five years.
- 3 He developed cataracts when he was in his seventies.
- 4 When he first went blind he didn't know what to do.
- 5 His first painting after he went blind was a picture of his daughter.
- 6 His style of painting didn't change when he went blind.
- 7 He uses bits of Blu-Tack to find things on the canvas.
- 8 Cadogan Contemporary Art Gallery has had one exhibition of his work.
- 9 Famous people have bought his paintings.
- 10 One of his paintings is for sale for £5,000.

**B** Watch the DVD again to check.

**4** Match 1–6 with the endings a)–f).

- 1 Sargy Mann sees his paintings as visual
  - 2 He has been registered
  - 3 The idea of painting when blind seemed a total
  - 4 He had all his equipment ready and decided to just give it
  - 5 Sargy Mann was a landscape
  - 6 Christopher Burness says Sargy Mann doesn't produce conventional
- a) nonsense to him at first.
  - b) metaphors for his experience of reality.
  - c) blind for twenty-five years.
  - d) painter before he went blind.
  - e) paintings – his work is edgy and dangerous.
  - f) a go.

**5A** EITHER choose an artist you know OR choose one of the artists below and find out as much as you can about him/her. Use questions 1–3 to help you.

- Van Gogh
- Rembrandt
- Da Vinci
- Frida Kahlo
- Toulouse Lautrec

- 1 Where was he/she born?
- 2 What were the key events in her/his life?
- 3 What is his/her most famous work?

**B** Work in groups. Ask and answer questions about the artist you chose.

*A: I chose Frida Kahlo.*

*B: Where is she from?*

*A: She was born in Coyoacán, near Mexico City.*