

BDY636: GERMPLASM AND PLANT TISSUE CULTURE

(SET 6)

Question 1:

Arrange the correct in vitro plant regeneration methods and phases.

Morphogenesis proceeds independently of the exogenous phytohormones

Somatic embryos are converted into viable plantlets

Embryogenic masses initiate from vegetative cells or tissues

Cells become competent

Answer:

1.

2.

3.

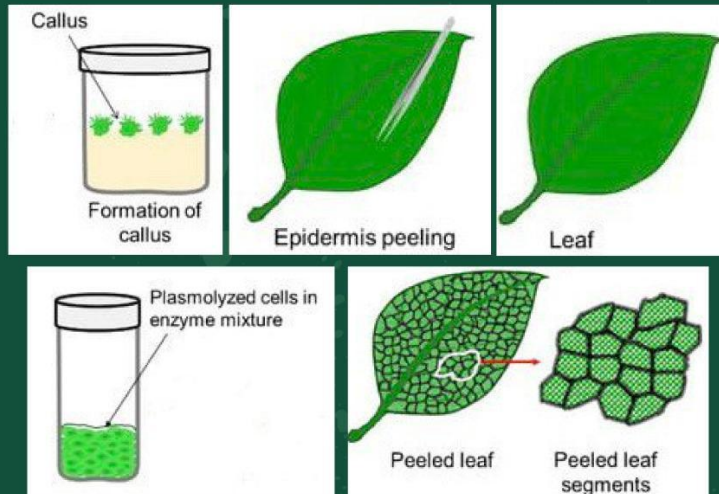
4.



BDY636: GERMLASM AND PLANT TISSUE CULTURE

(SET 6)

Question 2:
Arrange the correct stages in the protoplast culture.



Answer:

