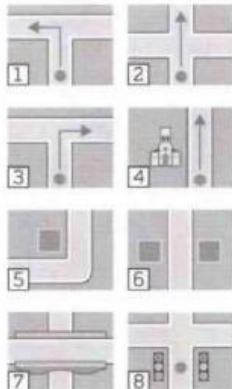


# Practical English Getting lost

## 1 VOCABULARY directions

Complete the words.

- 1 turn left
- 2 go str aight o ut
- 3 turn r ight
- 4 go p ast the station
- 5 on the c orner
- 6 o ut
- 7 a b ack
- 8 at the tr ain l ine



## 2 ASKING FOR DIRECTIONS

Complete the dialogue with these words.

exactly Excuse miss near say Sorry tell way Where's

- A <sup>1</sup> Excuse me, please. <sup>2</sup> Where's the station?
- B <sup>3</sup> Sorry, I don't live here.
- A Excuse me. Is the station <sup>4</sup> near here?
- C The station? It's near here, but I don't know <sup>5</sup> exactly where. Sorry.
- A Excuse me. Can you <sup>6</sup> tell me the <sup>7</sup> way to the station, please?
- D Yes, of course. Go past the hotel, then turn left at the traffic lights. It's at the end of the street.
- A Sorry, could you <sup>8</sup> say that again, please?
- D Yes. Go past the hotel, then turn left at the traffic lights and it's at the end of the street. You can't <sup>9</sup> miss it!
- A Thank you.

## 3 SOCIAL ENGLISH

Complete the sentences with the words in the box.

could course meet nice Maybe there What would

- 1 What a view!
- 2 What course you like to visit?
- 3 What is there to see?
- 4 We could go to the Houses of Parliament.
- 5 Would you like to meet for lunch?
- 6 That's really nice of you.
- 7 Maybe another time.
- 8 Yes, of would.

## 4 READING

a Read the information about getting around the UK.



### Getting around the UK

#### By bus and coach

In the UK, long-distance express buses are called coaches. These are always **economical**, but they can be very slow. The biggest company is National Express, which has **frequent** services between big cities. They're usually cheaper if you buy your ticket early and travel at quiet times. In many towns, there are separate bus and coach stations, so passengers need to make sure they go to the right place to get their coach.

#### By car

Car travel in the UK is expensive, and there is often a lot of traffic. However, travelling by car means that you can be independent and **flexible**, and a car carrying three or more passengers can be cheaper than public transport. Motorways take drivers quickly from one city to the next, but small roads are often more **scenic** and fun. Parking in the centre of big cities can be difficult and very expensive, so an alternative is to use a Park & Ride. This is a system where drivers pay less to park their cars outside the city and take a bus to the centre.

#### By train

Trains are generally faster and more comfortable than coaches for long-distance travel, but they can be a lot more expensive. About 20 different companies operate train services in the UK, so the system can be quite **confusing**. However, passengers can get information on timetables and fares from the National Rail Enquiries website, which also has a way to buy tickets. There are two types of ticket: first and **standard**, and tickets are much cheaper if you buy them early.

b Read the information again. Write T (true) or F (false).

- 1 Taking a coach is a slow way to travel. T
- 2 The best time to travel by coach is at quiet times. —
- 3 There isn't much traffic in the UK. —
- 4 In a Park & Ride system you take a train. —
- 5 You can buy tickets from National Rail Enquiries. —

c Match the **highlighted** adjectives to their meanings.

- 1 beautiful scenic
- 2 difficult to understand confusing
- 3 quite cheap economical
- 4 normal standard
- 5 easy to change something flexible
- 6 happening often frequent