

Name :

Class :

Beginning Sound

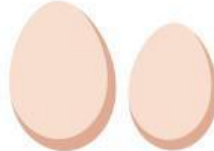
Choose the missing letters at the beginning sound.



	a	t
--	---	---



	o	w
--	---	---



	g	g
--	---	---



	o	g
--	---	---

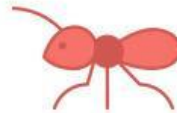
Pronounce the words correctly.



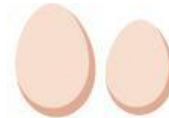
Hen



Cat



Ant



Egg

Listen the sound and write the correct words.



check the correct words.



Fish

Fihs

Shif

Hisf



Reed

Dere

Dree

Deer