

Name : _____

Class : _____

Number : _____

Unit 2: The Job

Answer the following question by choosing A, B, C, D, or E!

1. *The fifth of November Nineteen ninety-seven*

A. 5/11/97

B. 11/5/97

C. 97/11/5

D. 11/5/79

E. 5/11/90

2. *The fourth of July eighteen seventy-four*

A. 7/4/75

B. 4/7/74

C. 74/7/4

D. 747/4/7

E. 774/4/74

3. He ... up at 0700

A. Get

B. Gets

4. He and the Captain ... up at 0730

A. Get

B. Gets

5. How do you say 10.23 am on board?
- A. Twenty twenty three hours
 - B. Twenty three hours
 - C. Ten twenty three hours
 - D. Ten twenty o'clock
 - E. Twenty three hours
6. How do you say 09.00 a.m on board?
- A. Zero nine zero zero hours
 - B. Zero nine thousand hours
 - C. Zero nine hours
 - D. Zero nine hundred hours
 - E. Nine hundred hours
7. How do you say 11.14 p.m on board?
- A. Eleven fifteen hours
 - B. Twenty three hours
 - C. Fourteen eleven hours
 - D. Twenty three fourteen o'clock
 - E. Tenty three fourteen hours
8. How do you say 1.26 p.m on board?
- A. Thirteen twenty six hours
 - B. Thirteen twenty hours
 - C. Thirteen sixty two hours
 - D. Zero one twenty six hours
 - E. Twenty six hours

9. Thirteen fifty five hours

- A. 1.55 p.m
- B. 13.55 p.m
- C. 1.55 a.m

10. Zero seven hundred hours

- A. 7.00 a.m
- B. 7.00 p.m
- C. 17.00

11. Look at the picture!



The best statement for the picture above is....

- A. The Chief Engineer gets up at 0700 hours
- B. The Chief Engineer has breakfast at 0700 hours
- C. The Chief Engineer hands over the document at 0700 hours
- D. The Chief Engineer listens to the music at 0700 hours

12. Look at the picture!



The best statement for the picture above is....

- A. The Chief Engineer gets up at 1030 hours
- B. The Chief Engineer has breakfast at 1030 hours
- C. The Chief Engineer hands over the document at 1030 hours
- D. The Chief Engineer listens to the music at 1030 hours
- E. The Chief Engineer has dinner at 1030 hours

13. Look at the picture!



The best statement for the picture above is....

- A. The Chief Officer goes to the bridge at 0750 hours
- B. The Chief Engineer has breakfast at 0750 hours
- C. The Chief Engineer hands over the document at 0750 hours
- D. The Chief Engineer listens to the music at 0750 hours
- E. The Chief Engineer has dinner at 0750 hours

14. Look at the picture!



The best statement for the picture above is....

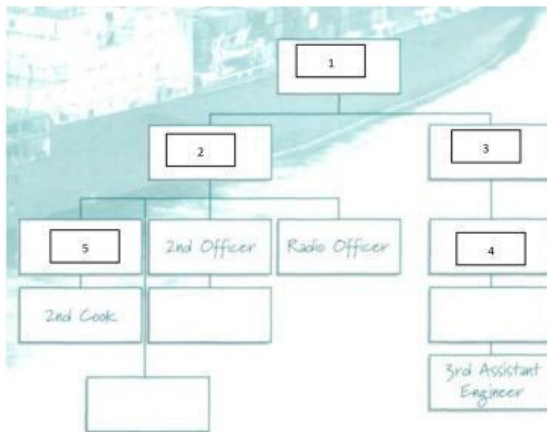
- A. The Chief Officer goes to the bridge at 1300 hours
 - B. The Chief Engineer has breakfast at 1300 hours
 - C. The Chief Engineer hands over the document at 1300 hours
 - D. The Chief Engineer listens to the music at 1300hours
 - E. The Chief Engineer has dinner at 1300 hours
15. The 3rd Officer ... at 0800. He gets up at 0700.
- A. Do not
 - B. Does not
16. The Bosun ... lunch at noon. He eats lunch at 1300.
- A. Does not eat
 - B. Do no eat
17. The Chief Officer and the Chief Engineer ... hand over at 1400.
- A. Do not
 - B. Does not
18. What time ... you go to bed?
- A. Do
 - B. Does
19. When ... he have breakfast?

- A. Do
- B. Does

20. What time ... the Chief Cook watch TV?

- A. Do
- B. Does

21. Look at the following diagram!



Number 1 is....

- A. Chief Engineer
- B. The Master
- C. Chief Cook
- D. 2nd Assistant Engineer
- E. Bosun

22. Number 2 is...

- A. Chief Officer
- B. Second Officer
- C. Chief Cook
- D. 2nd Assistant Engineer

E. Bosun

23. Number 3 is....

- A. Chief Officer
- B. Second Officer
- C. Chief Cook
- D. 2nd Assistant Engineer
- E. Chief Engineer

24. Number 4 is....

- A. Chief Officer
- B. 1st Assistant Engineer
- C. Chief Cook
- D. 2nd Assistant Engineer
- E. Chief Engineer

25. Number 5 is....

- A. Chief Officer
- B. 1st Assistant Engineer
- C. Chief Cook
- D. 2nd Assistant Engineer
- E. Chief Engineer