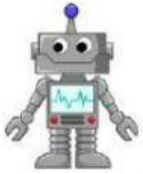


TOYS

Listen, read and choose

	Is it a ball? Yes, it is / No, it isn't
	Is it a kite? Yes, it is / No, it isn't
	Is it a car? Yes, it is / No, it isn't
	Is it a plane? Yes, it is / No, it isn't
	Is it a doll? Yes, it is / No, it isn't
	Is it a bike? Yes, it is / No, it isn't
	Is it a computer game? Yes, it is / No, it isn't
	Is it a teddy? Yes, it is / No, it isn't
	Is it a train? Yes, it is / No, it isn't

LOOK, READ AND CHOOSE



CAR

ROBOT

SCOOTER



DOLL

TEDDY

BIKE



BOAT

GUITAR

TEDDY



TEDDY

BOAT

COMPUTER



DOLL

BALL

BIKE



KITE

SCOOTER

CAR



DOLL

CAR

GUITAR



PLANE

TEDDY

BOAT



DOLL

BALL

TRAIN



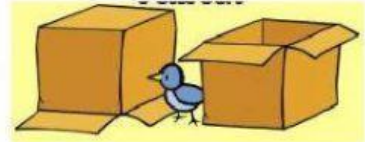
PREPOSITION OF PLACE

Look and complete the preposition of place

1. The cat is the box.



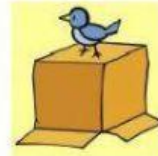
2. The bird is the boxes.



3. The cat is the box.



4. The bird is the box.



5. The cat is the box.



6. The cat is the box.



BETWEEN

BEHIND

ON

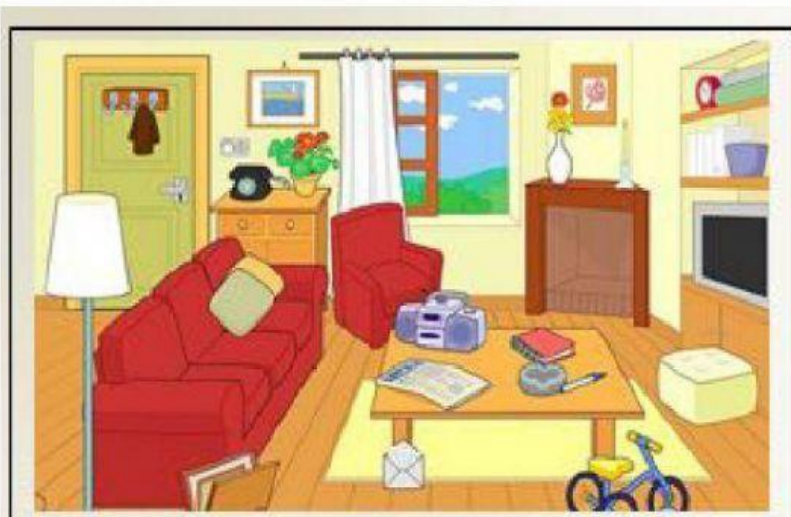
UNDER

IN FRONT OF

IN

PREPOSITIONS OF PLACE

I True or False.



- | | | |
|--|------|-------|
| 1.- The radio is in the table. | TRUE | FALSE |
| 2.- The telephone is behind the plant. | TRUE | FALSE |
| 3.- The book is on the table. | TRUE | FALSE |
| 4.- The lamp is under the sofa. | TRUE | FALSE |
| 5.- The TV is front of the sofa. | TRUE | FALSE |
| 6.- The clock is on the books. | TRUE | FALSE |
| 7.- The bike is behind the sofa. | TRUE | FALSE |
| 8.- The rug is under the table. | TRUE | FALSE |
| 9.- The pillows are in the sofa. | TRUE | FALSE |



This is my room! My bed is 1) **between** the windows.

There's a desk 2) ... my bed. 3) ...

my desk there is a computer and a lamp. Can you see my

cat, Cutie? She's 4) ... my computer! There

are some boxes 5) ... my bed. I've got my old

books 6) ... them. Can you see my dog, Max?

He's 7) ... the bed.