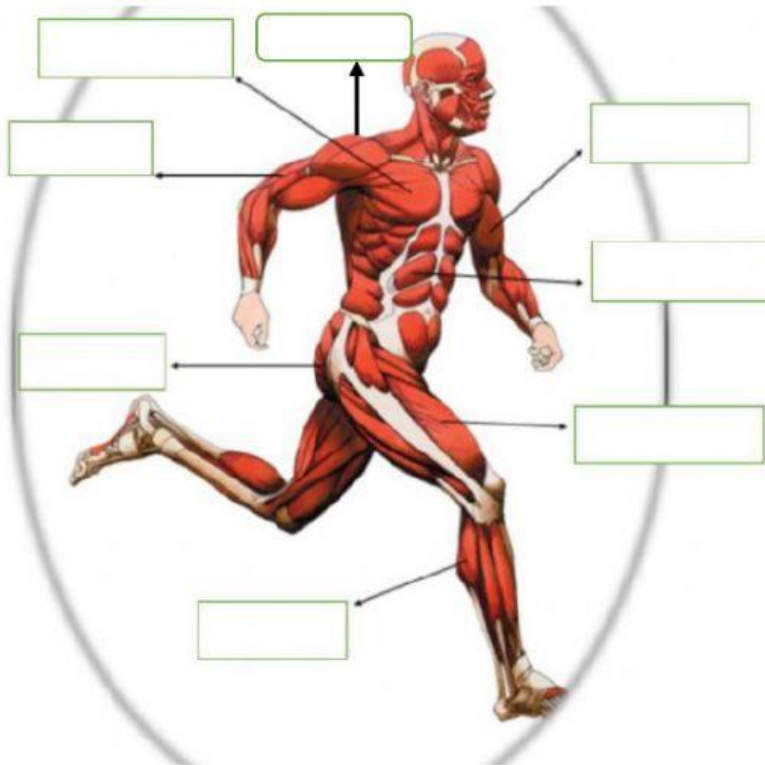


DRAG AND DROP THESE MUSCLES TO THE RIGHT PLACE



CALF

BICEPS

QUADRICEPS

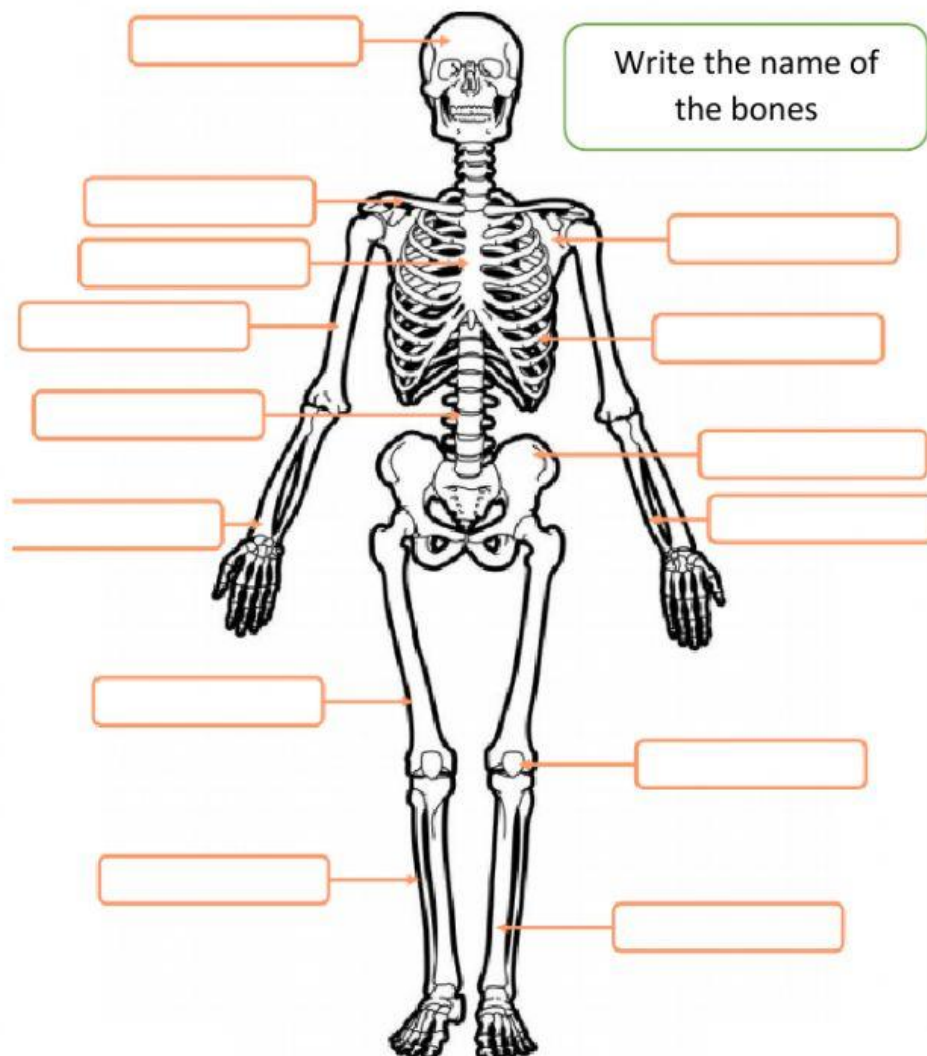
PECTORAL

GLUTEUS

TRICEPS

DELTOID

ABDOMINALS

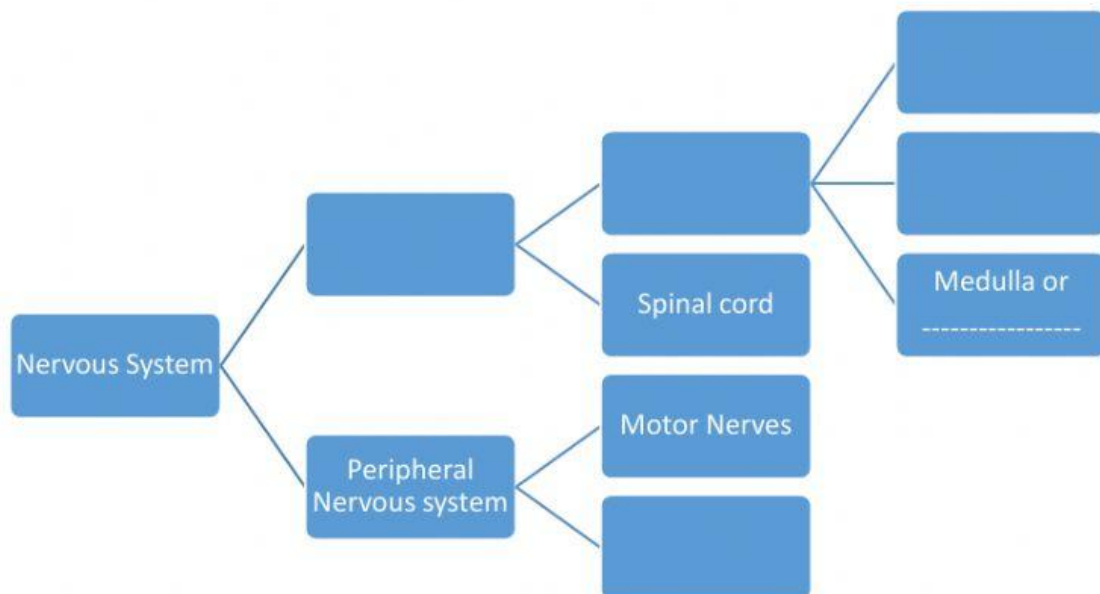


Write the name of
the bones

Read and choose the right one

- 1- It joints a bone with a muscle
- 2- It joints two bones
- 3- It's at the end of the bones
- 4- It's a joint in the arm
- 5- It's one of the smallest bone of our body
- 6- It's the biggest bone of the human body
- 7- It's a bone
- 8- It protects the lungs and the heart
- 9- These bones are in the hand
- 10- It's the largest muscle of the human body

COMPLETE THIS DIAGRAM OF THE NERVOUS SYSTEM



Complete.

Nervous system cells are called _____. The _____ is divided in three parts: cerebrum, cerebellum and medulla also called _____. The organs that capture stimuli from the environment are the _____. The organ responsible of _____ is the eye. The _____ is a hole in the middle of the _____. It allow _____ to enter the eye. In the back of the eye is the _____ that captures the light and send it to the brain through the _____.

Select if the sentence is true or false

The tympany is also called irdum.	TRUE	FALSE
Taste buds are the receptors of smell.	TRUE	FALSE
The ulna is one of the bones of the ear.	TRUE	FALSE
The three layers of the skin are dermis, epidermis and hipodermis.	TRUE	FALSE
The sound waves enter in the ear and hit the tympanic membrane.	TRUE	FALSE
The pinna is a part of the sense of touch.	TRUE	FALSE
The skin protects our body from bacteria and germs.	TRUE	FALSE
The largest organ of ou body is the femur.	TRUE	FALSE
The time between an stimulus and a response is called reduction time.	TRUE	FALSE
Parkinson is a disease of the nervous system	TRUE	FALSE

Complete

