

3A GRAMMAR *be going to* (plans and predictions)

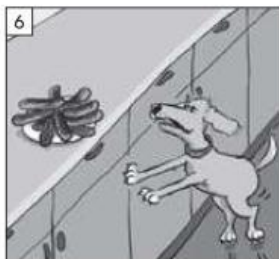
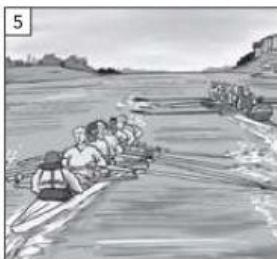
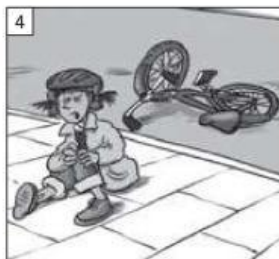
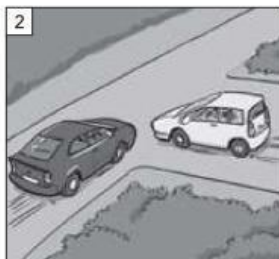
a Complete the conversations with the correct form of *be going to* and a verb from the list.

do have ~~get~~ get go not do visit work

- 1 A What are you doing?
B I ¹ 'm going to get a trolley. I can't carry all these bags.
- 2 A ² _____ you _____ your homework this evening?
B No, I'm not. I'm really tired. In fact, I ³ _____ anything – just sleep!
- 3 A So, do you like it here in Oxford?
B Yes, we love it! But we're only here for a short time. We ⁴ _____ lots of different places.
A Where ⁵ _____ you _____ next?
B Liverpool. We ⁶ _____ the train there.
- 4 A How's your daughter?
B She's fine, thanks.
A Does she have any plans for the summer?
B Yes. She ⁷ _____ in a bookshop for six weeks.
A ⁸ _____ she _____ a holiday?
B No, I don't think she is.

b What's going to happen? Write a sentence with *be going to* and a verb from the list for pictures 1–8.

be late break crash cry eat make ~~miss~~ not win



- 1 He's going to miss the bus.
- 2 They _____.
- 3 He _____ a cake.
- 4 She _____.
- 5 They _____ the race.
- 6 The dog _____ the sausages.
- 7 He _____ for work.
- 8 She _____ the window.

ACTIVATION

Test your memory. Practise the conversations in **a** with a partner. Then cover sentences 1–8 in **b**. Look at the pictures and remember the sentences.

3B GRAMMAR present continuous (future arrangements)

Look at Luke's diary. Write the questions and the answers. Use the present continuous.

MONDAY	TUESDAY	WEDNESDAY	THURSDAY
Work 9.00–12.00 a.m. Dinner with Frank 8.00 p.m.	10.00 a.m. Take Mum to the hospital 3.00 p.m. Tennis	Work 4.00–6.00 p.m. 7.30 p.m. Theatre with Yaz and Omar	10.00 a.m. Meet Sam to study Help Dad with the garden
FRIDAY	SATURDAY	SUNDAY	
Dentist 11.30 a.m. Party at Frank's! 8.00 p.m.	9.00 a.m. Go shopping – buy Ellie's present 4.00 p.m. George – Café Tivoli	10.30 a.m. Meet Ellie at station! 5.00 p.m. Drive to Wales – with Ellie	

- he / meet Sam on Monday?
'Is he meeting Sam on Monday?' 'No, he isn't.'
- When / he / go to the station?
'When is he going to the station?' 'He's going to the station on Sunday.'
- Who / he / take to the hospital on Tuesday?

- When / he / work?

- he / have dinner with Frank on Monday?

- What / he / do on Sunday morning?

- What / he / do on Friday night?

- When / he / go to the dentist?

- What / he / do on Saturday morning?

- When / he / play tennis?

- Who / he / see on Saturday afternoon?

- When / he / help his dad?

- he / go to the theatre on Wednesday?

- he / meet George at the museum?

- What / he / do on Sunday afternoon?

ACTIVATION

Write down one arrangement that you have each day next week.
Tell a partner. Use the present continuous.