



Listen and repeat.



*In the morning I wash my face
In the evening I clean my place
At 2 o'clock I play with my dog
At 5 o'clock I take a walk
On Wednesdays I go to the gym
On Sundays I go for a swim.*



Prepositions of time

In	At	On
in the morning	at 8 o'clock	on Sunday(s), on Monday(s),
in the afternoon	at noon	on Tuesday(s), on Wednesday(s),
in the evening	at night	on Thursday(s), on Friday(s),
in July (months)	at midnight	on Saturday(s)
in (the) summer (seasons)	at lunch time	on August 2nd (dates)
in 2010 (years)	at dinner time	on Friday afternoon
	at the weekend	

1 Circle the correct prepositions.

- I get up at / in 7:30.
- August is in / on the summer.
- It rains in / at January.
- I go to the park on / in the afternoon.
- She goes to the gym at / on Tuesdays.
- We play tennis in / on the morning.
- We all eat together at / on dinner time.
- I watch TV on / at 8 o'clock.
- We play football on / in Fridays.
- We sleep at / in night.

2 Fill in: in, on or at.

- ...in... December
- Friday
- midnight
- the winter
- the evening
- 2012
- June 1st
- noon
- 11 o'clock
- August
- the spring
- Sunday

3 Fill in: *on*, *in* or *at*.

1



2



3



4



5



6



4 Match.

- 1 ☐ Ian's birthday is on
 2 ☐ The film starts at
 3 ☐ She goes to school in
 4 ☐ It snows in
 5 ☐ I usually go to the park on
 6 ☐ We sometimes visit our friends at

- A the winter.
 B the morning.
 C the weekend.
 D May 2nd.
 E 7 o'clock.
 F Sundays.

5



Write the words or phrases in the correct box. Listen and check.



on

in

at

6

Choose the correct item.

1 She eats breakfast the morning.

A in B on C at

2 Dad comes home half past six.

A on B at C in

3 Sunday we go to the beach.

A At B On C In

4 We never watch TV dinner time.

A in B on C at

5 It rains the winter.

A on B in C at

6 My birthday is July 9th.

A on B at C in

7 She doesn't work night.

A at B in C on

8 We have lunch noon.

A in B on C at

9 Chris watches TV the evening.

A at B in C on

10 School starts September.

A at B on C in

7

Fill in: on, in or at.

1 My friend's birthday is ..on.. November 3rd.

2 Lisa and Wilson usually go on holiday August.

3 Christopher comes home from work 6 o'clock.

4 She walks her dog the afternoon.

5 My friends and I meet the weekend.

6 Patricia has a piano lesson Friday evening.

16

Prepositions of Time

8

What does Alina do on Mondays? Use these phrases:

come back get up go to school go to bed



seven o'clock



half past eight



quarter to three



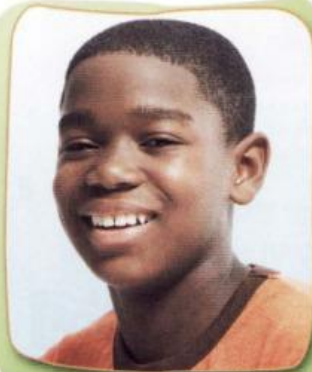
quarter past nine

Alina gets up at seven o'clock.

• Now write what you do on Tuesdays.

9

Fill in: on, in or at.



This is Sebastian. Every day, he gets up 1) at half past seven. He has breakfast and then he leaves for school 2) at quarter past eight. 3) in the evenings, he watches TV or reads a book. 4) on the weekends, Sebastian likes to have fun with his friends. 5) on Saturday, they often go to the park and ride their bikes and 6) in the evening they go to the cinema. 7) on Sunday morning, Sebastian and his friends usually play football.

10

Fill in: on, in, or at.

Dear Jessica,

It's my birthday 1) in August and I'm writing to invite you to my party. The party is 2) on Saturday August 2nd 3) at 7 o'clock 4) in the evening. Why don't you come 5) in the morning so we can put up the balloons and other decorations together?

You can spend the night with us.

I really hope you can come!

Love,

Nina



Speaking Activity

Ask and answer questions with *when* with a partner. Use the phrases: *your birthday*, *get up*, *go to school*, *watch TV*, *play football*, *go to the park*, *go on holiday*.



When is your birthday?

I get up at 7:30.

My birthday is in June. When do you get up?



What do you do?

Say a time phrase. Your partner makes a sentence using this phrase.



Tuesdays!

I go swimming in July.

I go to my guitar lesson on Tuesdays, July!



Writing Activity

It's your birthday. Write an email to your friend and ask him/her to come to your party. Use the email in Ex. 10 as a model.

Dear

It's my birthday

Love,