



Listen and repeat.



Affirmative		Negative		Interrogative
Long form	Short Form	Long	Short Form	
I am	I'm	I am not	I'm not	Am I?
You are	You're	You are not	You aren't	Are you?
He is	He's	He is not	He isn't	Is he?
She is	She's	She is not	She isn't	Is she?
It is	It's	It is not	It isn't	Is it?
We are	We're	We are not	We aren't	Are we?
You are	You're	You are not	You aren't	Are you?
They are	They're	They are not	They aren't	Are they?

1 Write as in the example.

Long Form

- 1 It is a doll.
- 2 They dancers.
- 3 He a teacher.
- 4 We girls.
- 5 I Tony.
- 6 She a singer.

Short Form

- 1 It 's a doll.
- 2 They dancers.
- 3 He a teacher.
- 4 We girls.
- 5 I Tony.
- 6 She a singer.

2 Fill in: *am, is or are*.

1 I a dancer and
you a singer.



2 We football players
and they tennis players.



3 He a mechanic and
she an engineer.



4 I a firefighter and
he a policeman.



5 You a policeman
and I a nurse.



6 We pupils and
you students.



7 I a bus driver and
you a postman.



8 I a pilot and he
..... an astronaut.



9 I a doctor and
he a teacher.



3 Match column A with column B, then write the sentences.

(A)

- 1 I am a
- 2 He is
- 3 It is
- 4 She is
- 5 We are

(B)

- A a box
- B Mary
- C Jim
- D pupil
- E singers

I am a pupil.

4 Fill in: *'m not, isn't or aren't*.

- 1 I *'m not* a teacher.
- 2 You an engineer.
- 3 We dancers.
- 4 He a bus driver.

- 5 She an astronaut.
- 6 I a student.
- 7 They postmen.
- 8 It a dog.

6

The verb 'to be'

5

Fill in the pronoun *I, he, she, it, we, they* with *'m not, isn't or aren't*.



1 *He isn't* a policeman.
He is a singer.



2 a teacher.
I'm a doctor.



3 a postman.
He's a pilot.



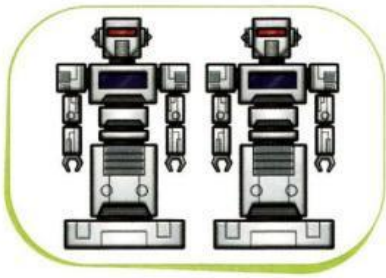
4 firefighters.
They are policemen.



5 an engineer.
She's a teacher.



6 singers.
We are doctors.



7 balloons.
They are robots.



8 a fox.
It's a penguin.



9 a teacher.
She is a nurse.

6

Fill in: *Am, Is or Are*.

1 *Are* you a pupil?
2 he a teacher?
3 they dancers?
4 I a pilot?

5 you firefighters?
6 it a dog?
7 she a nurse?
8 it an apple?

Short answers

Am I/Are you a pupil?

Yes, I am.

No, I'm not.

Is he/she/it big?

Yes, he/she/it is.

No, he/she/it isn't.

Are we/you/they pupils?

Yes, we/you/they are.

No, we/you/they aren't.

7 Answer the questions using short answers.



1 Is he 7?

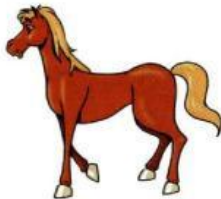
No, he isn't.



2 Are they babies?



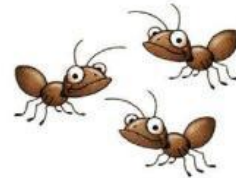
3 Is he a firefighter?



4 Is it a zebra?



5 Is she a singer?



6 Are they bees?

8 Answer the questions.



1 Are they mechanics?

No, they aren't.
They're firefighters.



2 Is he a postman?



3 Is she a dancer?



4 Are you bus drivers?



5 Are they tennis players?



6 Is it a flower?

6

The verb 'to be'

9



Fill in: *am*, *is* or *are*. Listen and check.

I 1) Meena. I 2) 7. I 3) a pupil. Sunita 4)
my mum. She 5) a teacher. Deepak 6) my dad. He 7)
an engineer. Dev 8) my brother. He 9) a student. We
10) a happy family!



What am I?

Think of a job. Your partner asks three questions to guess who you are.



Are you a teacher?

Are you a bus driver?

Are you a pilot?

No, I'm not.

No, I'm not.

Yes, I am.



Writing Activity

Write a short text about you and your family. Use the text in Ex. 9 as a model.

.....

.....

.....

.....

.....

.....

.....

.....

.....

.....