

REVIEW WEEK 1 – PART 2

1. Match the types of teeth and their definitions.

1. Incisors

a) They appear at between 11 and 12 years.
They are **sharp** and **tear** food.

2. Canines

b) They appear when children are between 6 and 8 years. They **cut** food.

3. Premolars...

c) The firsts appear at age 6. They are the **strongest** teeth and **grind** food.

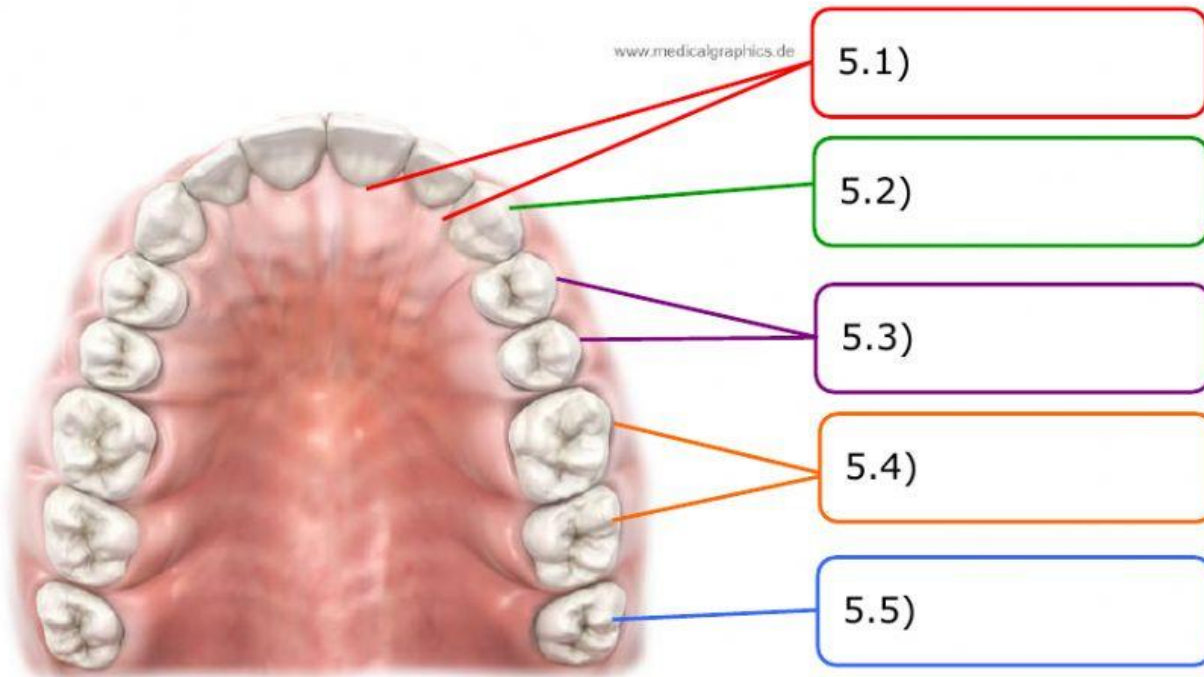
4. Molars

d) They appear at age 9 and 10. They **break** and **grind** food.

5. Wisdom teeth

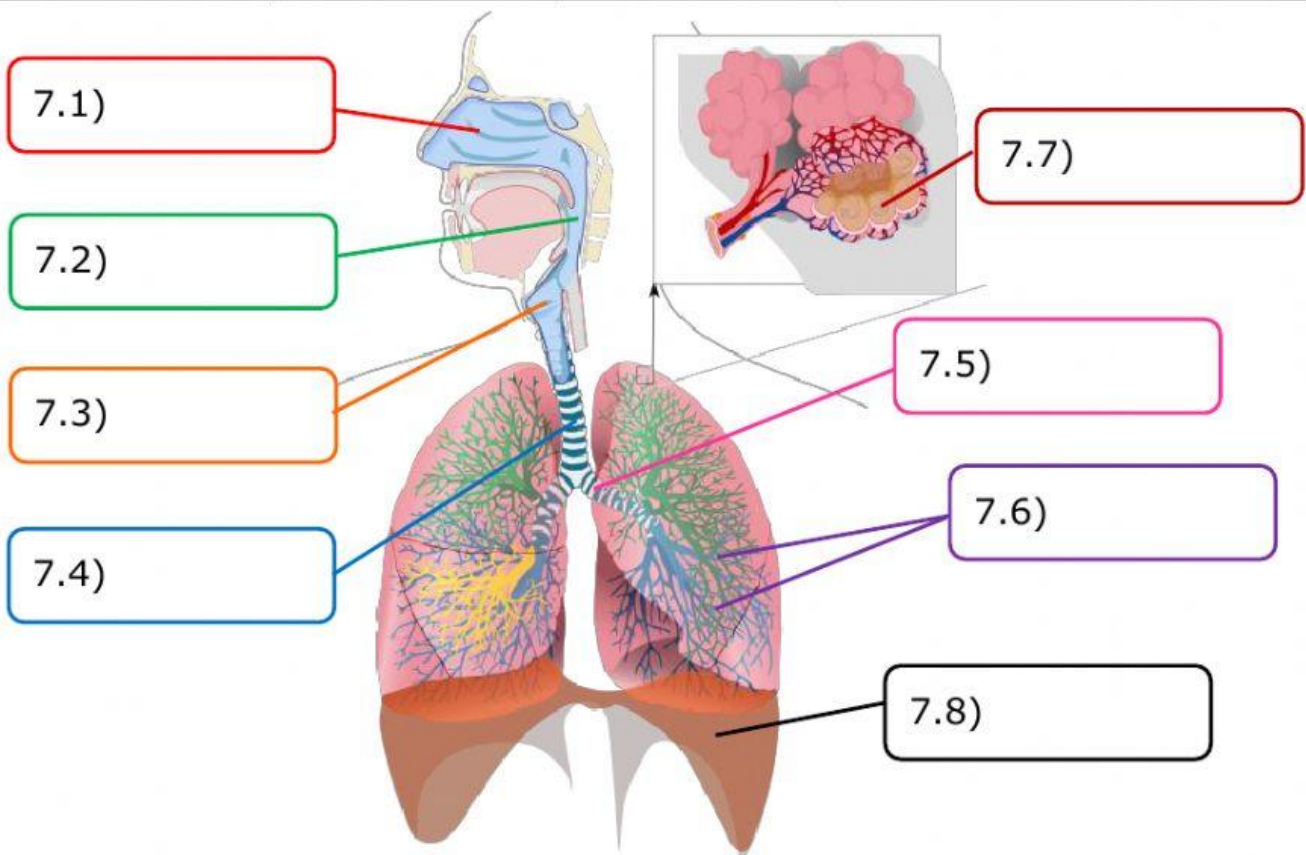
e) They appear between the ages of 17 and 25. They are sometimes **removed**.

2. Choose the name of the different types of teeth.

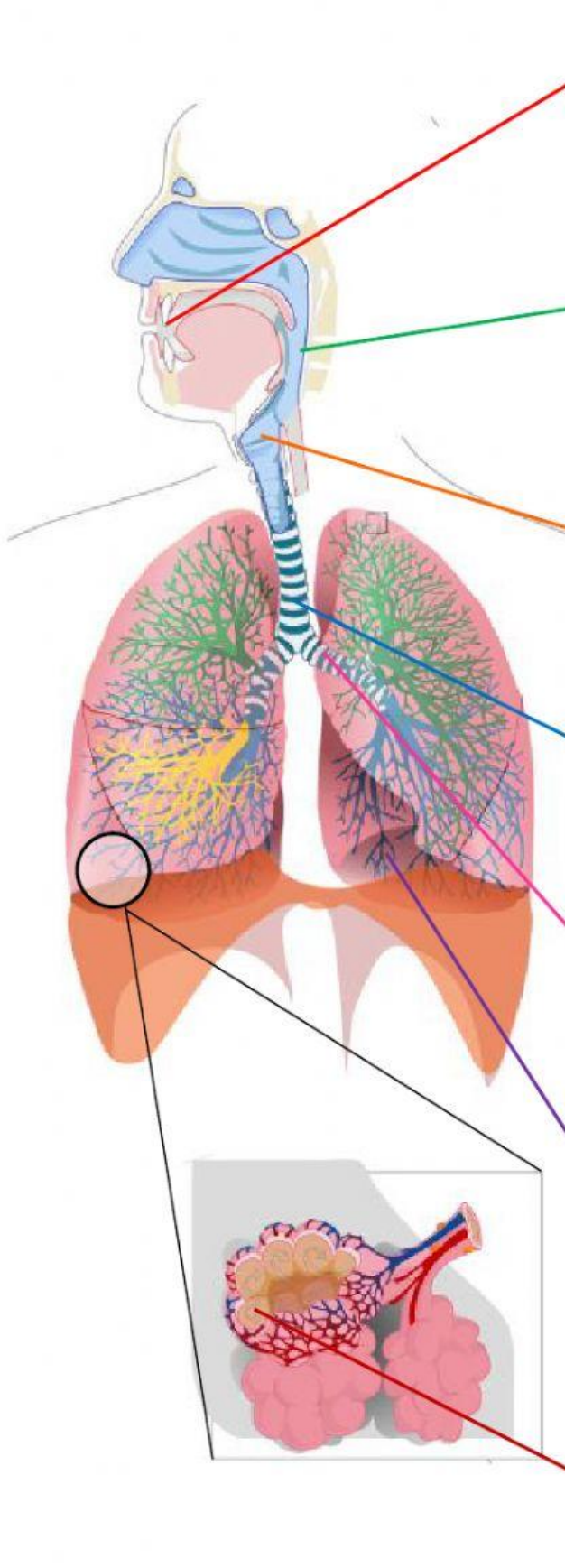


3. Place the organs of the respiratory system in their boxes.

Nose	Bronchioles	Larynx	Trachea or windpipe
Bronchi	Pharynx	Diaphragm	Alveolar sacs or alveoli



4. Complete the definitions by writing the organs of the respiratory system.



The diagram illustrates the human respiratory system. It shows the nasal cavity, oral cavity, pharynx, larynx, trachea, bronchi, and lungs. A circular inset provides a magnified view of the alveoli, which are small sacs where gas exchange occurs. Colored lines connect the numbered labels to specific parts of the system: 8.1 points to the nasal cavity, 8.2 points to the pharynx, 8.3 points to the larynx, 8.4 points to the trachea, 8.5 points to the bronchi, 8.6 points to the bronchioles, and 8.7 points to the alveoli.

8.1. Air enters the _____ and gets warm and moist.

8.2. The _____ takes the air from the nasal cavity to the next organ and food to the oesophagus.

8.3. The air passes through the _____ where the **vocal cords** are.

8.4. The _____ or _____ is a big tube.

8.5. The _____ are two tubes in the **lungs**.

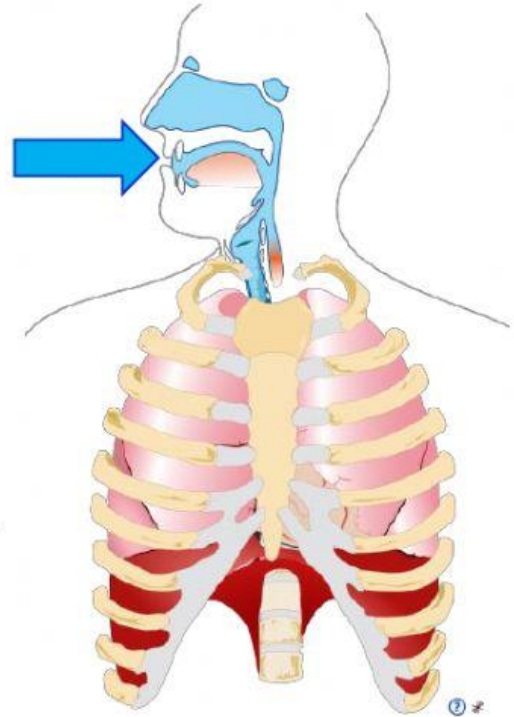
8.6. The respiratory tract divides in two **smaller tubes** called _____.

8.7. The _____, also called alveoli sacs, are millions of very small sacs. The **gas exchange** happens there.

5. Choose the correct answer and copy it the box.

INHALATION

- We breathe (9.1) _____ air.
- Our lungs get (9.2) _____.
- We inhale (9.3) _____.
- The air passes to our (9.4) _____
and then our (9.5) _____.



EXHALATION

- We breathe (9.6) _____ air.
- Our lungs get (9.7) _____.
- We exhale (9.8) _____
because our body doesn't need it.

