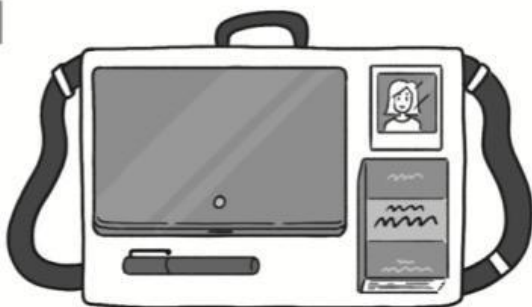


1 Look at the bags. Find:

- ☐ a cinema ticket ☐ train tickets ☐ a computer ☐ a map

1



2



3



4



Poppy



Maksim



June



Dan

2 Read the sentences. Choose the correct alternatives.

- 1 There *is / are* keys in Poppy's bag.
- 2 In Maksim's bag, there *is / are* two books.
- 3 There *isn't / aren't* a phone in Dan's bag.
- 4 There *is / are* no books in Poppy's bag.
- 5 There *is / are* train tickets in Dan's bag.
- 6 In June's bag there *is / are* a pen.
- 7 There *isn't / aren't* any pens in Poppy's bag.
- 8 There *are / is* no cinema tickets in Maksim's bag.
- 9 In Dan's bag, there *is / are* a key.
- 10 There *is / are* a computer in June's bag.

3 Work in pairs. Match the bags with the correct people.