

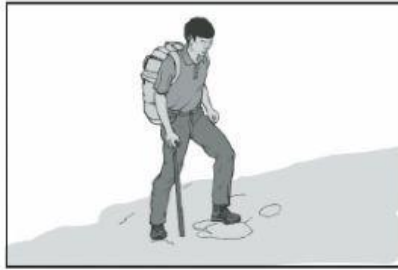
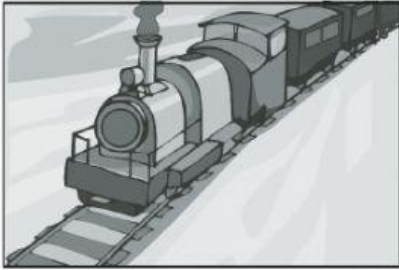
LISTENING

A

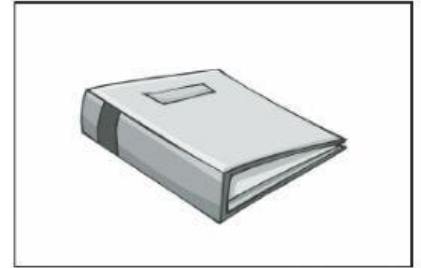
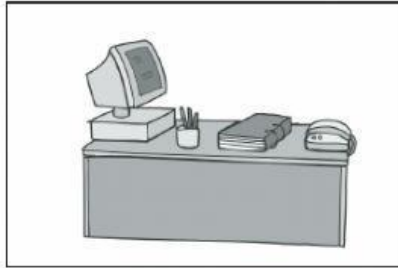
B

C

1.



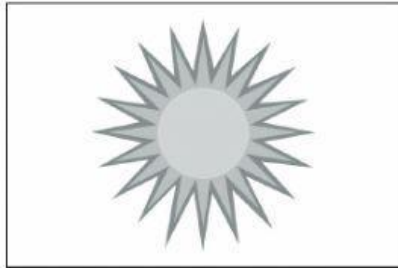
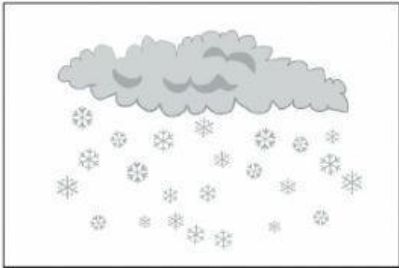
2.



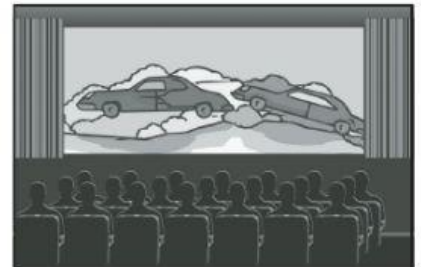
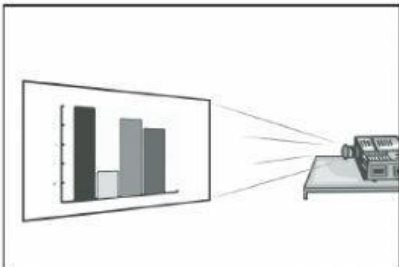
3.



4.



5.



LISTENING

A

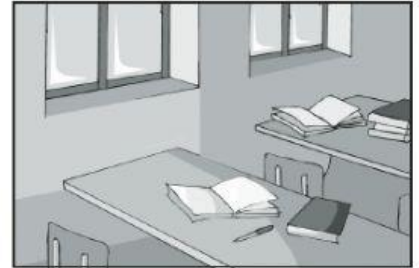
B

C

6.



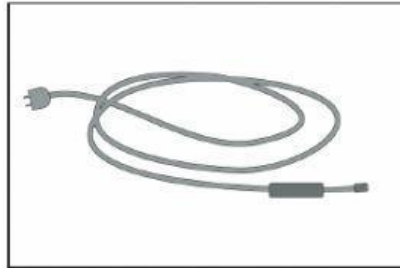
7.



8.



9.



10.



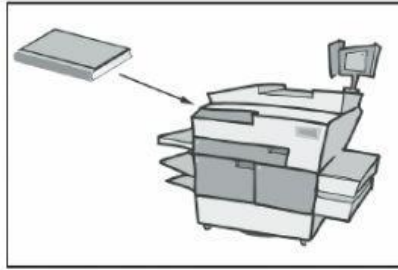
LISTENING

A

B

C

11.



12.



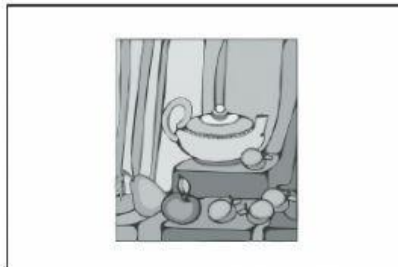
13.



14.



15.



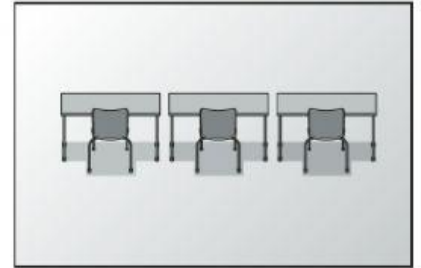
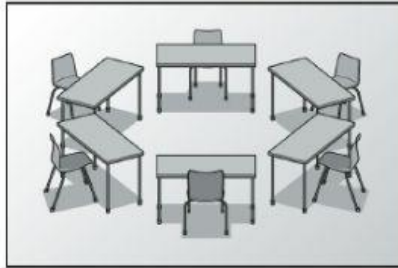
LISTENING

A

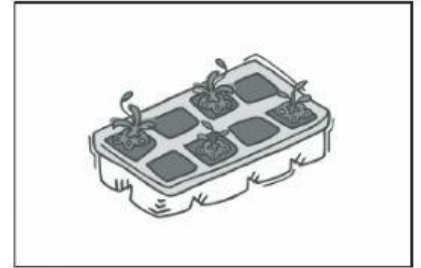
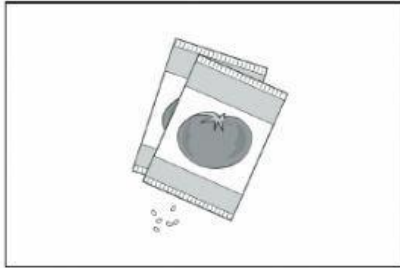
B

C

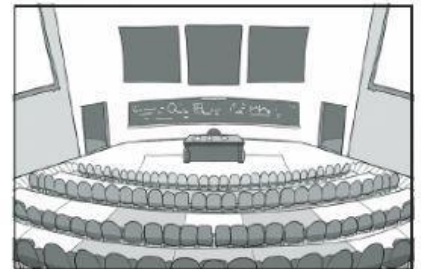
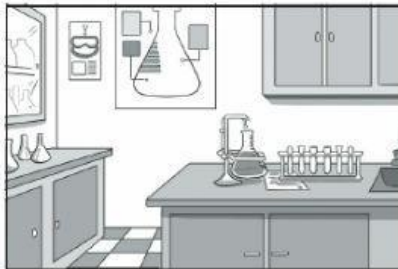
16.



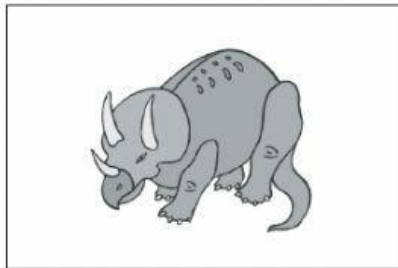
17.



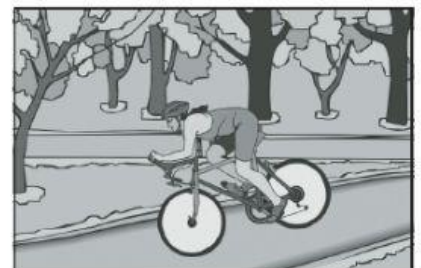
18.



19.



20.



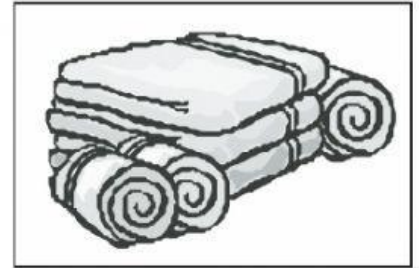
LISTENING

A

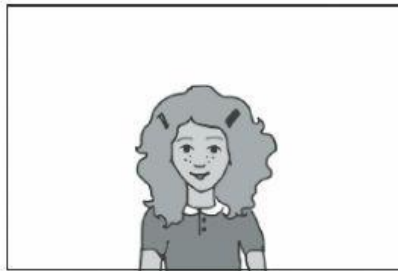
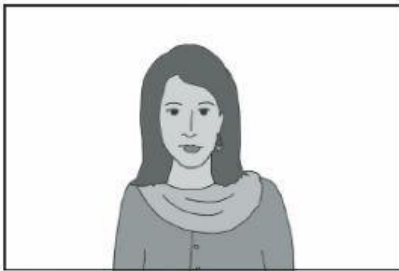
B

C

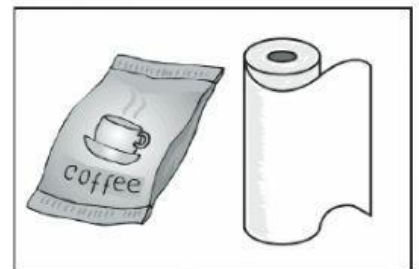
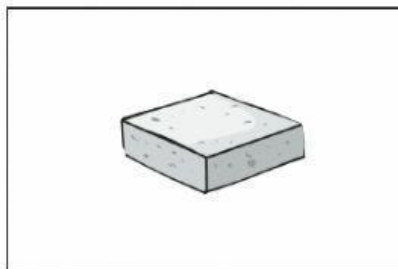
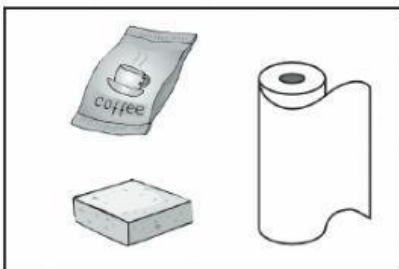
21.



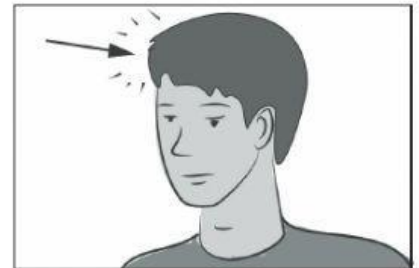
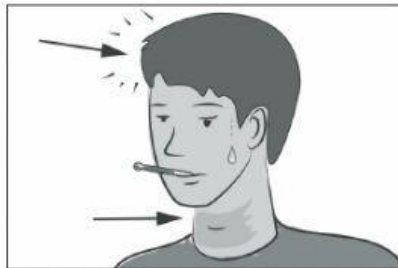
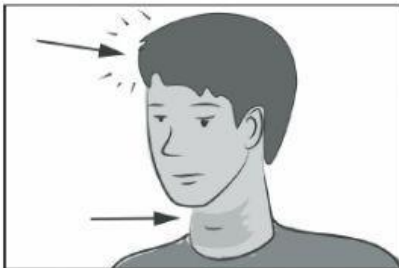
22.



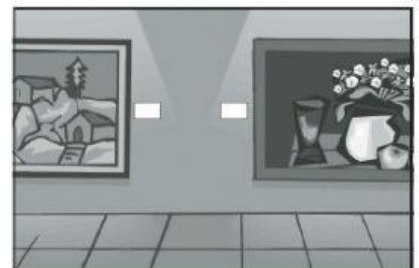
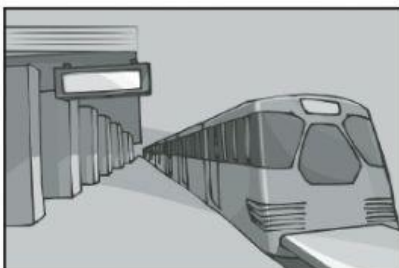
23.



24.



25.



LISTENING

Now you will hear the first talk. Look at the questions.

Notes

Listen to a radio announcement.


26. What should participants bring with them?
- A. a song they wrote
 - B. their own musical instrument
 - C. tickets and a costume
 - D. music and identification
27. According to the speaker, what information can be found on the website?
- A. how to register
 - B. rules about music
 - C. directions to the event
 - D. ticket prices for the event
28. Why does the speaker mention Angie Adams and Matthew Miller?
- A. They are in charge of the event.
 - B. They are past winners of a prize.
 - C. They work at the radio station.
 - D. They are judges on a TV show.
29. How often will the show be in town?
- A. twice a year
 - B. every Saturday
 - C. every year
 - D. one time only
30. What is the main purpose of this announcement?
- A. to advertise a popular concert
 - B. to introduce a new band
 - C. to invite people to join a contest
 - D. to find actors for a new TV show

LISTENING

Now you will hear the second talk. Look at the questions.

Notes

Listen to the head of a local tourism board.


31. What is said about a bus?
- A. It will not run during bad weather.
 - B. It will provide a tour to visitors.
 - C. It will transport residents to work.
 - D. It will stop at several new locations.
32. What does the speaker say is new?
- A. activities on the beach
 - B. the variety of tours available
 - C. trucks that drive people to the beach
 - D. the business hours of restaurants in town
33. Why does the speaker mention a storm?
- A. to warn the audience
 - B. to notify people about limited transportation
 - C. to explain why tourists stopped coming
 - D. to explain why food is sold differently
34. What is the main purpose of this talk?
- A. to welcome new visitors to the area
 - B. to discuss proposals regarding a city's tourism
 - C. to tell residents what to expect from visitors
 - D. to describe a development project
35. What does the speaker mean when she says: 
- A. She will give a short demonstration.
 - B. She will show some pictures.
 - C. She will pass out some materials.
 - D. She will give a brief explanation.

LISTENING

Now you will hear the third talk. Look at the questions.

Notes

Listen to an advertisement on the radio.

36. What does the speaker say about well-known, local artists?
- A. They will be present at the sale.
 - B. They supplied some art for free.
 - C. They are former students of the school.
 - D. They teach in the art program.
37. What does the speaker say about the money raised this year?
- A. It will be used to invite an artist to visit.
 - B. It will be used to support next year's event.
 - C. It will be used to purchase art for the school.
 - D. It will be used to fund a student trip.
38. What does the speaker suggest by mentioning Pablo Picasso?
- A. Some of the students could become famous.
 - B. Some of the pieces were influenced by famous artists.
 - C. Some of the artists are professionals.
 - D. Some of the paintings could be expensive.
39. How can buyers see the art before the day of the event?
- A. by contacting the school's art instructor
 - B. by reading the school newspaper
 - C. by visiting the school before the sale
 - D. by checking the school's website
40. What does the speaker imply when she says: 
- A. The art will be inexpensive.
 - B. The art will be valuable someday.
 - C. The art was displayed in another city.
 - D. The art was painted years ago.

LISTENING

Now you will hear the fourth talk. Look at the questions.

Listen to a manager speaking to some employees.

41. What will the employees encourage people at the event to do?
- A. work for their company
 - B. taste some coffee
 - C. try on some clothes
 - D. go grocery shopping
42. Why does the speaker mention email addresses?
- A. They are necessary to get a sample.
 - B. They are necessary to win a prize.
 - C. The employees need to provide them.
 - D. The employees need them to contact stores.
43. What does the speaker say is the main goal of the day?
- A. to help organize the event
 - B. to sell a large quantity of a product
 - C. to make people aware of a product
 - D. to collect people's phone numbers
44. What does the speaker imply about the company T-shirts?
- A. Employees will pass them out to people.
 - B. Employees will be selling them at the event.
 - C. Employees will be cold without a coat.
 - D. Employees will be allowed to keep them.
45. What is the main purpose of the talk?
- A. to explain a new type of product
 - B. to give instructions to workers
 - C. to encourage friendly behavior
 - D. to welcome people to a large event

Notes



End of the listening test