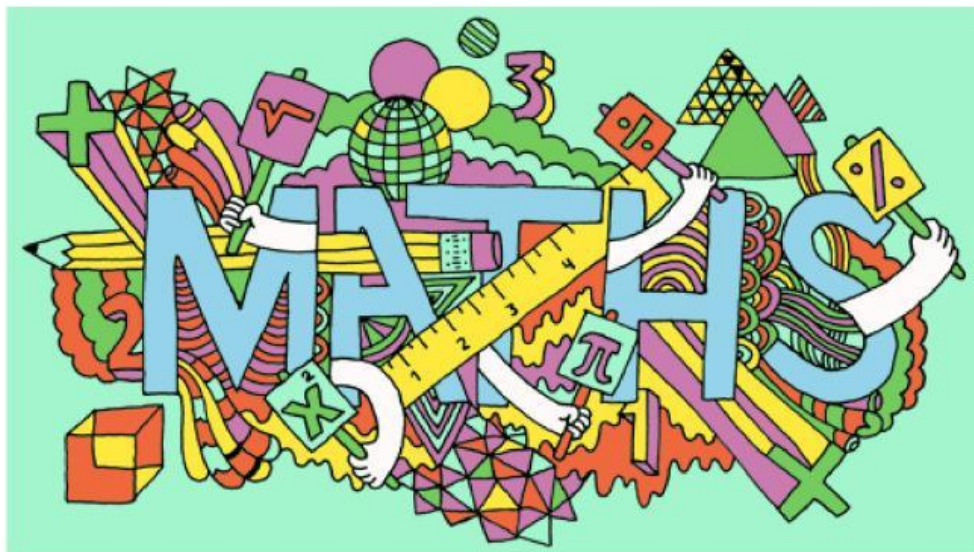




# Maths Department

## Pre-test Practice Easy MK11

Featuring whole numbers, fractions, geometry, areas and volumes, averages



Name: \_\_\_\_\_

Question 1

Jim has 24 pencils in one box, and 36 pencils in another box. How many pencils does he have altogether?

12

24

8

50

60

Question 2

James has 74 pluses. Edith has 48 pluses. How many more pluses does James have than Edith?

26

36

34

122

64

Question 3

One metre is made up of 100 centimetres. How many centimetres are there in a half a metre?

50 cm

500 cm

50 m

0.5 cm

5 cm

## Question 4

Multiply the numbers 27 and 6.

142

152

162

1242

21

## Question 5

Multiply  $34 \times 25$

2534

8500

3425

850

85

## Question 6

What is  $612 \div 6$  ?

62

102

18

602

302

Question 7

I buy a ruler for 45p, a pen for £3.45 and 3 rubbers, each costing 50p. How much do I spend?

£5.40

£4.40

£1.50

£3.90

£12

Question 8

There are 1000 millilitres (ml) in one litre. How many ml are there in 2 and a half litres?

1000 ml

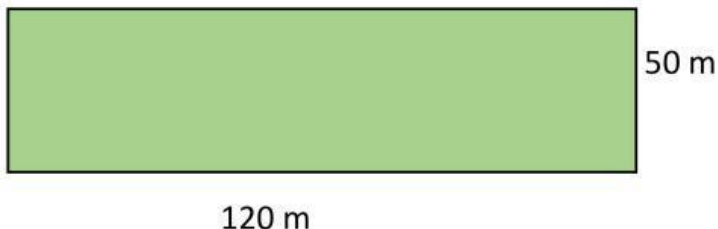
1500 ml

2.5 ml

2500 ml

1002.5 ml

Question 9



Jess walks all the way around a field which measures 120 m by 50 m. How far does she walk in total?

340 m

170 m

600 m

6000 m<sup>2</sup>

220m

## Question 10

In a bag of bolts and nuts, Jimmy has two bolts for every three nuts. If he has 16 bolts, how many nuts does he have?

12

16

24

30

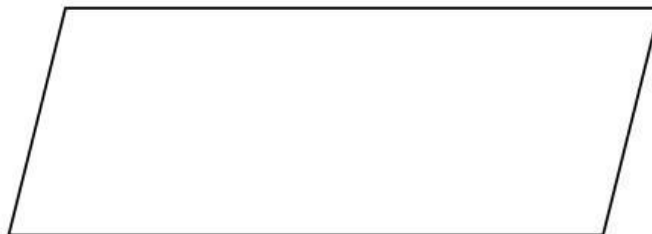
36

## Question 11

The temperature at 6pm was  $5^{\circ}\text{C}$ . By midnight it had fallen by 7 degrees. What was the temperature at midnight?

 $7^{\circ}\text{C}$  $12^{\circ}\text{C}$  $-2^{\circ}\text{C}$  $2^{\circ}\text{C}$  $-12^{\circ}\text{C}$ 

## Question 12



What is the **order of rotational symmetry** of a parallelogram?  
(How many times will it spin on to itself in one rotation?)

0

1

2

4

8

Question 13

How many *lines of symmetry* does a parallelogram have?



0

1

2

4

5

Question 14

Which of these words or phrases is the odd one out?

Right angle

equilateral

isosceles

scalene

kite

Question 15



What is the area of a rectangle that has dimensions 10cm by 4.7 cm?

47 cm

47 cm<sup>2</sup>

4.7 m

4.7 cm

94 cm<sup>2</sup>

Question 16

6cm

Area of rectangle =  $30 \text{ cm}^2$

Length?

What is the height of a rectangle that has a length of 6 cm and an area of  $30 \text{ cm}^2$ ?

36 cm

$180 \text{ cm}^2$

180 cm

$5 \text{ cm}^2$

5 cm

Question 17

The volume of a mug of tea is measured.  
Which is the *most likely* volume?

15 ml

100 ml

100 litres

15 litres

950 ml

Question 18

Find the mean average of the following three temperatures:

$37^\circ$

$25^\circ$

$43^\circ$

$35^\circ$

$25^\circ$

$30^\circ$

$37^\circ$

$33^\circ$

## Question 19

Find the mean average of the following five lengths:

14 cm    19 cm    11 cm    12 cm    14 cm

19cm	15cm	16cm	14cm	17cm
------	------	------	------	------

## Question 20

Find the mean average of the following temperatures:

1°    4°    3°    2°    0°    4°    7°    3°    2°    4°

0°	1°	2°	3°	4°
----	----	----	----	----