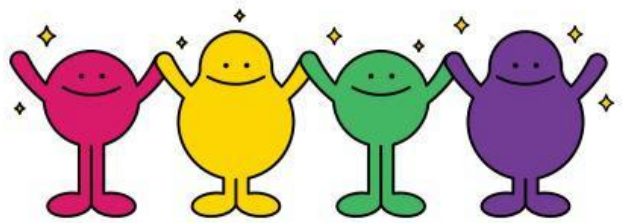


PERSONALITY



Read the following adjectives to describe personalities.
Match them to the definitions below.

*ambitious / arrogant / assertive / bad-tempered
calm / cheerful / conscientious / easy-going / eccentric
funny / immature / impulsive / insecure / insincere / loyal
open-minded / optimistic / possessive / reserved
self-confident / stubborn / vain / well-balanced / wise*

she's the kind of person that...

1. always looks at herself in every mirror she passes.
2. takes care to do things carefully and correctly.
3. is prepared to accept new and different ideas.
4. doesn't say what she really thinks.
5. other people often find different or unusual
6. is fairly relaxed about most things.
7. is emotionally in control, not moody.
8. never changes her opinion when she's clearly wrong.
9. expresses her ideas and opinions with confidence.
10. is always in a good mood.
11. feels sure about her abilities to do things.
12. is very sure about herself.
13. is determined to be successful.

he's good at...

14. supporting his friends,
15. giving people advice because of his knowledge and experience.
16. keeping his head in a crisis

he's not very good at...

17. letting other people share his friends.
18. showing her feelings or expressing his opinions.

she tends to...

19. behave like a child.
20. act without thinking.
21. get angry easily.
22. think she's better and more important than other people.
23. expect good things to happen.

she has got...

24. a great sense of humour.

ADJECTIVE SUFFIXES

Many adjectives are formed by adding a suffix to a noun or verb. Look at some typical suffixes in the chart.

-ible <i>responsible</i>	-able <i>sociable</i>	-ful <i>helpful</i>	-y <i>bossy</i>
-ive <i>assertive</i>	-ous <i>ambitious</i>	-al <i>practical</i>	-ic <i>ironic</i>

Add more adjectives from the previous exercise.



NEGATIVE ADJECTIVES

Write the opposite of the following adjectives using the following PREFIXES:

**IM- IR- IN-
UN- DIS-**

MATURE: < →
ACTIVE: < →
SELFISH: < →
HONEST: < →
SECURE: < →
STABLE: < →
PROPER: < →
LOYAL: < →
EDIBLE: < →
JUST: < →

CONSCIOUS: < →
POLITE: < →
RELEVANT: < →
VERTEBRATE: < →
LEGIBLE: < →
REPARABLE: < →
ACCEPTABLE: < →
CAPABLE: < →
ARMED: < →
AMBITIOUS: < →



IDIOMS!



An idiom is a group of words, or in other words, a phrase that has a different meaning from the literal meaning of the words in it.

Look at the **highlighted** words and try to find their meaning:

My boss is such a **cold fish**. I am not sure whether she likes me or not.

She has a **heart of gold**. She will always help anyone with anything.

She is as **hard as nails**. She doesn't care who she hurts.

I hope Jack doesn't come tonight. He is such a **pain in the neck**.

Let's match the idioms with their definitions:

- A. annoying, difficult.
- B. very kind, generous.
- C. distant, unfriendly.
- D. shows no sympathy or fear.



WRITING!



Write a short text describing your personality using the words from today's lesson. (Write about 100/150 words).