



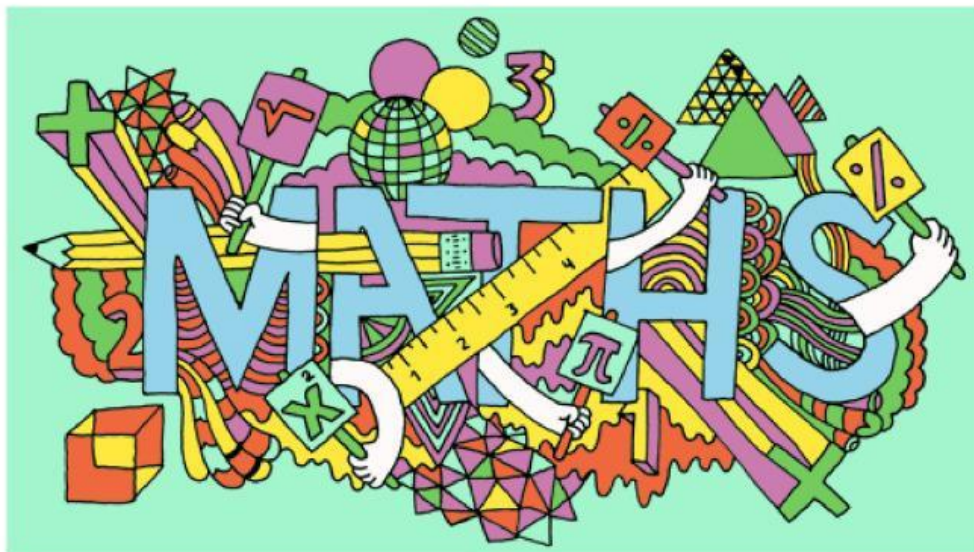
Maths Department

Pre-test Practice **Mk10**

This is basically an arithmetic test! **Do not use a calculator!**

You will need to use written methods of addition, subtraction, multiplication and division. If doing it digitally you will need to have pencil and paper with you.

However, if you see a way of getting to the answer logically without brute force, go for it!



Name: _____

Question 1

52 bottles each have a volume of 333 ml. What is the total volume of all the bottles together?

17.316 litres

17. 136 litres

17.666 litres

17.361 litres

17.613 litres

Question 2

Bizlets cost 25 pence each. I have £23.75.
How many Bizlets can I buy?

75

85

95

105

110

Question 3

I have made 36 tables in my workshop. I wish to sell them for £435 each. How much money do I hope to make?

£15 330

£15 660

£15 665

£15 455

£1 560

Question 4

Ted says he has spent 864 hours studying Latin. There are 24 hours in a full day. How many days is 864 hours?

18 days

24 days

28 days

30 days

36 days

Question 5

Of the 68 543 fans at the game, 15 725 were away fans. How many home fans were at the game.

48 368 fans

52 818 fans

53 818 fans

53 812 fans

55 622 fans

Question 6

What is the next number in the sequence?

289

256

225

196

169

144

121

136

149

100

Question 7

What is a half of a sixteenth?

$\frac{1}{4}$

$\frac{1}{8}$

$\frac{1}{16}$

$\frac{1}{32}$

$\frac{1}{64}$

Question 8

What is $562 \div \frac{1}{3}$?

1686

1696

1676

1666

1683

Question 9

What is the area of a field that is 86 metres by 45 metres?

3880 m²

3770 m²

3870 m²

3985 m²

3875 m²

Question 10

What is the perimeter of a rectangle that measures 45.3 cm by 28.4 cm?

73.7 cm²

73.7 cm

147.4 cm²

147.4 cm

1286.52 cm

Question 11

A square has an area of 169 cm². What is its perimeter?

52 cm

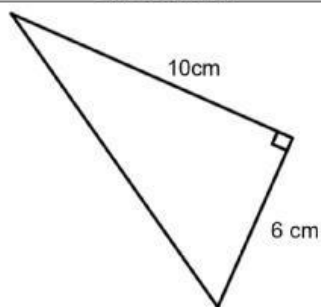
38,416 cm²

26 cm²

26 cm

13 cm

Question 12



What is the area of the triangle?

30 cm²

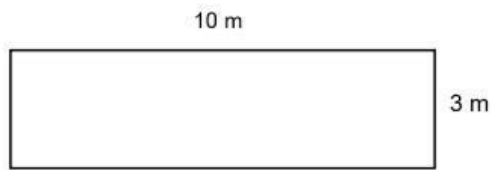
60cm²

15 cm²

30cm

60 cm

Question 13



A 10 m by 3 m patio is to be paved with stones that are 20 cm by 20 cm. How many stones are needed?

750 stones

650 stones

850 stones

7500 stones

3000 stones

Question 14

What is the lowest common multiple of 23 and 37?

60

8551

849

851

8459

Question 15

Bea and Henri share the driving in a ratio of 2 : 5. If Henri drives 745 km, how far did they drive altogether?

298 km

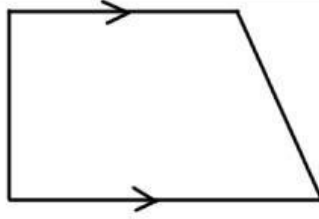
149 km

1043 km

943 km

6000 km

Question 16



What is the exact name of this shape?

The shape has not been drawn perfectly. You must decide its name based on the markings.

kite	quadrilateral	parallelogram	trapezium	rhombus
------	---------------	---------------	-----------	---------

Question 17

How many lines of symmetry does a kite have?

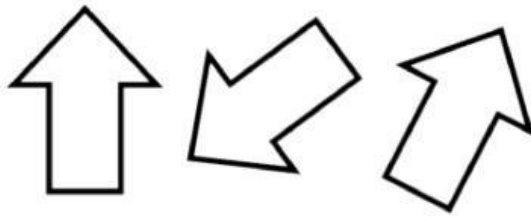
0	1	2	3	an infinite number
---	---	---	---	--------------------

Question 18

How many lines of symmetry does a regular dodecagon have?

0	1	5	10	12
---	---	---	----	----

Question 19



What word best completes the sentence: the shapes shown are _____ .

regular

congruent

obtuse

right angled

isosceles

Question 20

The perimeter of a regular nonagon is 63.18 metres. What is the length of one side of the nonagon **in cm**?

304 cm

72 cm

702 cm²

72 cm

702 cm