

# WORKSHEET

Review

Teacher's feedbacks

**Task 1: Rearrange the following letters: Con sắp xếp các từ sao cho đúng nhé**



m/f/a/r/e/r



o/z/o



o/p/s/t o/c/i/e/f/f



p/i/l/a/h/o/s/t



l/c/i/e/p/o s/a/t/i/o/n/t



m/f/r/a











l/c/i/e/p/o/n/a/m



k/e/r/z/o/e/p/r/e/o

## Task 2: Rearrange words to complete the sentences: Con sắp xếp lại các từ để hoàn thành câu nhé

	<p>a) She/a / pupil./is</p> <p>.....</p>		<p>b) He/ a / is/ farmer.</p> <p>.....</p>
	<p>c) a /He/ is/policeman.</p> <p>.....</p>		<p>d) work?/Where/she/does</p> <p>.....</p>
	<p>e) in/ a/He/works/hospital.</p> <p>.....</p>		<p>f) is /He/ a/fireman.</p> <p>.....</p>
	<p>g) does/he/work?/Where</p> <p>.....</p>		<p>h) a/ She/ is/ zookeeper.</p> <p>.....</p>

## Task 3: Look and write: Con nhìn và viết đáp án nhé



1. What does he do?

He is a .....

2. Is he a policeman?

.....



3. Where does he work?

He works in a.....

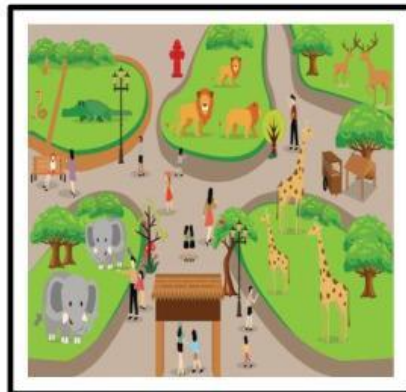


4. What does she do?

She is a .....

5. Is she a teacher?

.....



6. Where does she work?

She works in a.....



## Task 4: Listen and choose: Con nghe và chọn nhé

1. What does she do?

a. She is a teacher.

b. She is a nurse.



2. Where does he work?

a. He works in an airport.

b. He works in a school.

3. What does he do?

a. He is a farmer.

b. He is a doctor.



4. Where does she work?

a. She works in a hospital.

b. She works in a house.

5. What does he do?

a. He is a fireman.

b. He is a pilot.

6. Where does he work?

a. He works in a farm.

b. He works in a fire station.

7. Is he a pupil?

a. Yes, he is.

b. No, he isn't.



8. Is she a housewife?

a. Yes, she is.

b. No, she isn't.