



## Percentage Change

$$\text{Percentage change} = \frac{\text{Change}}{\text{Original}} \times 100$$



e.g. A car was bought for £4000 and two years later was sold for £3500.  
Calculate the percentage decrease in the value of the car.

Alternate terms the question ask for  
Percentage increase  
Percentage decrease  
Percentage profit  
Percentage loss  
You would use the same formula

$$\frac{500}{4000} \times 100$$

$$0.125 \times 100$$

$$\underline{\underline{12.5\%}}$$

As the value decreased by £500



### WARM UP

SOLVE EACH PROBLEM AND ROUND OFF YOUR ANSWER TO TWO DECIMAL PLACE :

- 1) What is 25% of 530 ? \_\_\_\_\_
- 2) 10 is 6% of what number ? \_\_\_\_\_
- 3) What % of 69 is 55 ? \_\_\_\_\_

4) 91 is 10% of what number ? \_\_\_\_\_

5) What % of 150 is 36 ? \_\_\_\_\_

## **FIND THE NEW AMOUNT :**

1) An increase of 89% in 1586 in : \_\_\_\_\_ in

2) A decrease of 99% in 3897 ft : \_\_\_\_\_ ft

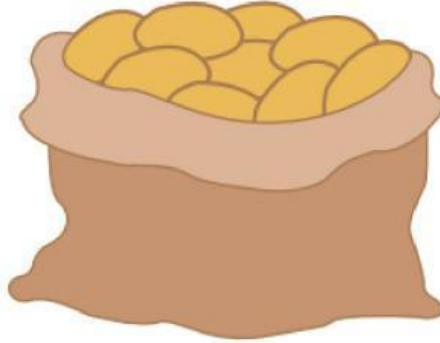
3) A decrease of 6% in 3453 yd : \_\_\_\_\_ yd

4) A increase of 40% in 7921 oz : \_\_\_\_\_ oz

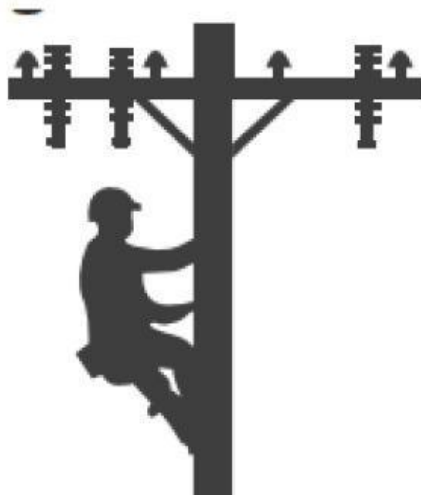
5) An increase of 52% in 3580 lb : \_\_\_\_\_ lb

6) A decrease of 35% in 9920 pt : \_\_\_\_\_ pt

- 7) A supermarket receives 175 pounds of potatoes during the first week of June. The weekend supply of potatoes increases by 23% . How many pounds of potatoes does the supermarket receive on the weekend ? \_\_\_\_ pounds



- 8) A telephone pole outside Ben's home is 480 inches tall. A hurricane brought it down . It was later replaced by a new pole that was 15% taller than the damaged one. Calculate the height of the new telephone pole. \_\_\_\_ in



- 9) Mo and Ben went on a road trip and covered a total of 3564 miles . Their return route measured 21% less than the distance covered on their onward route . How many miles did they drive on their return home ? \_\_\_\_\_ miles



- 10) Helena used 150 fluid ounces of condensed milk to chocolate bar . She added 33% more milk into the mix . How much condensed milk in all Helena used to make chocolate bars? \_\_\_\_\_ fluid ounces

