

## 9 General appearance

### 1 He's quite a big guy

Match the pairs of sentences with the pictures on the right:

1. He isn't very tall.  
He's short and stocky.
2. She's tall and slim.  
She's got a lovely figure.
3. He's quite a big guy.  
He's quite well-built.
4. She's a bit overweight.  
She's quite plump, isn't she?
5. He's very fat.  
He's absolutely enormous.
6. He's very thin.  
He's so skinny.

a.



b.



c.



d.



e.



f.



*Slim is more positive and attractive than thin. Skinny is negative. If somebody is skinny, they are too thin. Saying that somebody is overweight or plump is more polite than saying they're fat.*

### 4 Order of adjectives

Put these descriptions in the correct order:

1. He's a . . . . . man with . . . . .  
. . . . . hair. (*short, tall, fair, good-looking*)
2. She's a . . . . . woman with  
. . . . . hair. (*tall, long, thin*)
3. I've got . . . . . hair and I'm tall  
and very . . . . . (*thin, straight, black*)
4. She's very . . . . . with a . . . . .  
tan and . . . . . hair.  
(*blonde, lovely, good-looking, long*)
5. I wouldn't describe my husband as . . . . .  
. . . . . and . . . . . ! Short, overweight,  
and going thin on top is more accurate!  
(*handsome, dark, tall*)

## 2 A small, slim, blue-eyed blonde

Look at the following extracts of written language and match them to their sources below:

a.

Small, slim, blue-eyed blonde, GSH, early 30's WLTM hunky male 28-38 for fun and friendship. Call me on 09765-567892.

b.

The first man was small and wiry, with sharp, strong features. Behind him walked his opposite, a huge man, with wide shoulders; and he walked heavily, dragging his feet a little, the way a bear drags his paws.

c.

The police are looking for a man of average height and medium build in his mid-twenties. He was last seen wearing a dark green or grey anorak.

d.

The tallest man in medical history is Robert Pershing Wadlow who was born on 22nd February 1918 in Illinois, USA, and who died on 15th July 1940 in Michigan. He was last measured on 27th June 1940 and was found to be 272cm tall.

1. An extract from a novel.
2. An extract from a newspaper report.
3. An extract from the Guinness Book of Records.
4. An advertisement in a lonely hearts section of a newspaper.

What do you think WLTM and GSH mean?

## 3 Adjective + noun collocations

Use these collocations in the sentences below:

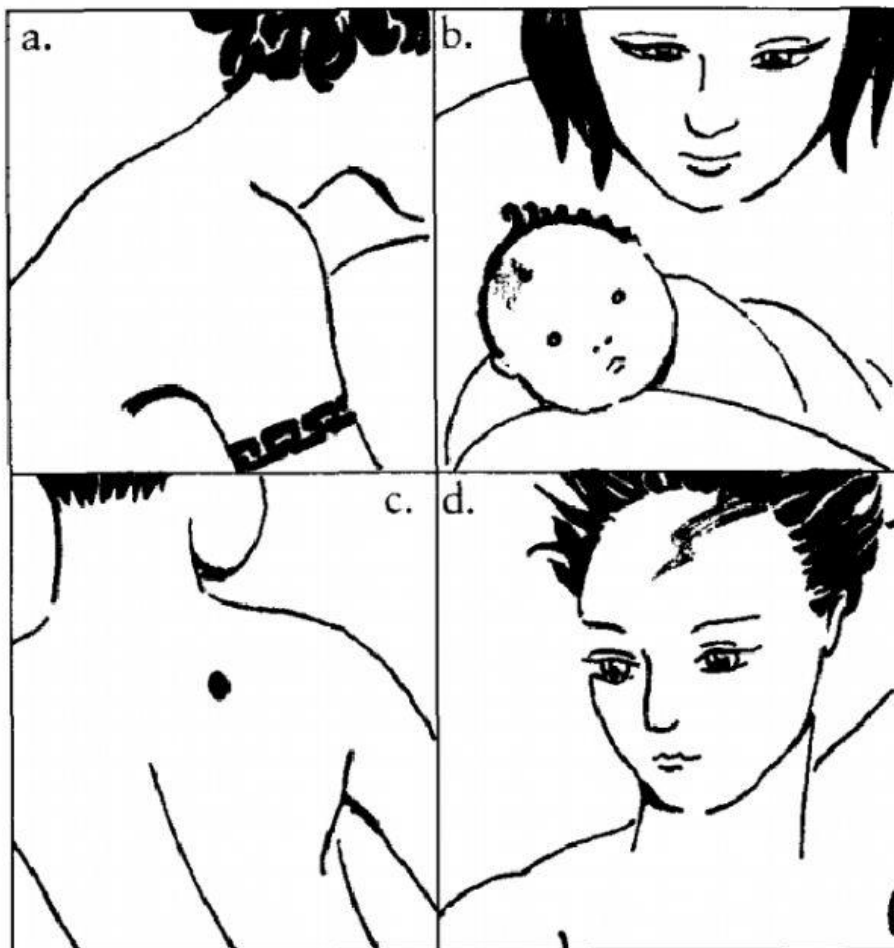
long nails	bad skin
big feet	deep voice
lovely complexion	long legs
hairy chest	thin legs

1. Size 12! Are these your shoes? You've got really . . . . ., haven't you?
2. You've got such . . . . . . Would you like to move the seat back a bit?
3. I've never seen you in shorts before. You've got such . . . . . . You should go running and try to build up them up a bit!
4. My boyfriend's got a really . . . . . . It's like being with a gorilla.
5. You've got such lovely . . . . . . Are they real?
6. He's got such a . . . . . . I find it very sexy when he speaks to me on the phone.
7. Keith's new girlfriend must spend a fortune on face cream to have such a . . . . . .
8. Poor Tim. He's had really . . . . . ever since he was 13.

## 5 Distinguishing features

Match the sentences with the pictures:

1. The accident left a scar on his forehead.
2. He's got a birthmark on his head.
3. I've just had a tattoo done.
4. He's got a mole on his back.



*How tall are you?*

*Do you have any distinguishing features?*

*Try to think of a famous person who is:*

*tall and thin*

*short and stocky*

*absolutely enormous.*