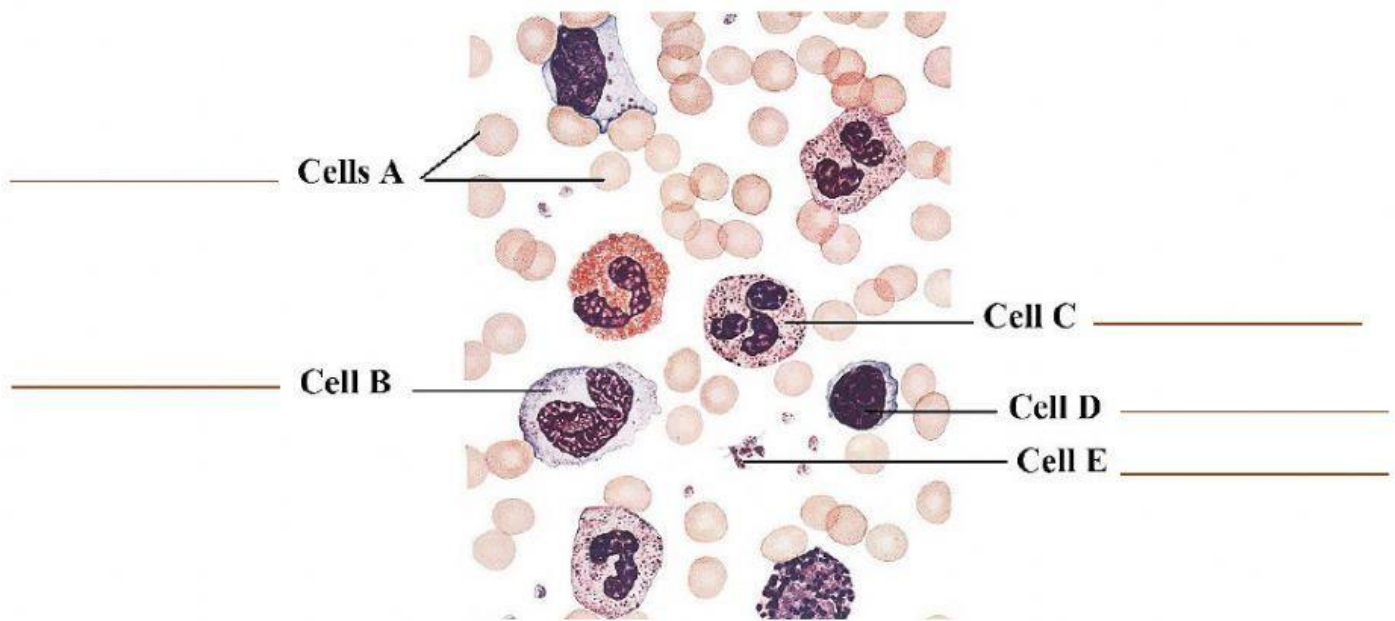


Grade 8-Biology test

1.1 Name cells (A, B, C, D and E) represented in the blood smear below by choosing the correct answer from the following box:

Monocyte - Platelets - Granulocyte - Erythrocyte - Lymphocyte



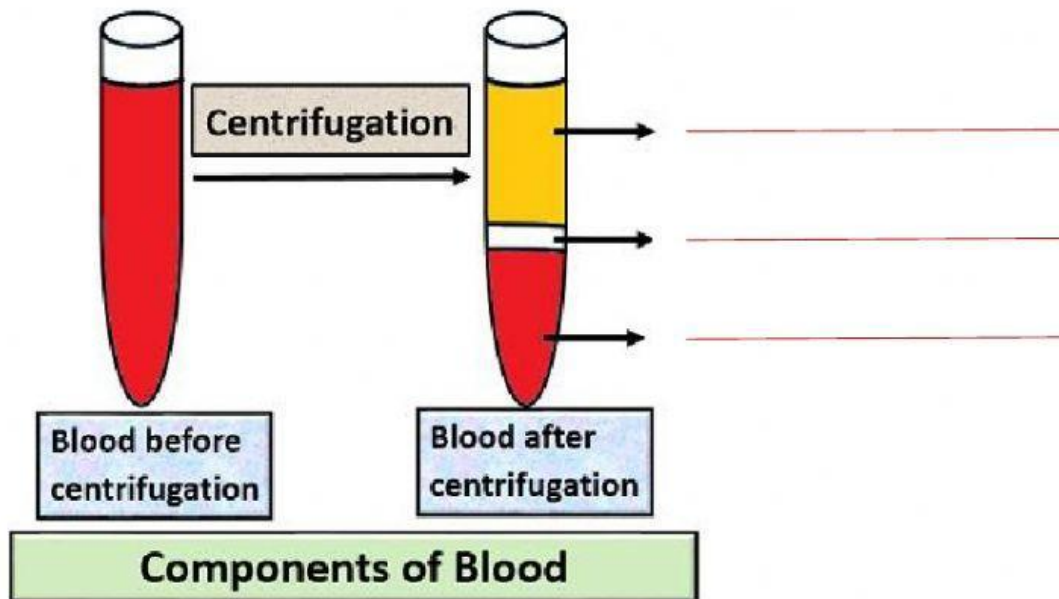
1.2. Complete the following sentences by choosing the corresponding word from the box:

phagocytosis - antibodies - macrophage - infection - differentiation -
functions - receptors

- Upon an, cell "B" crosses the blood capillary wall towards the infected area, it becomes bigger in size by the process of and it is then called The obtained cell will eliminate the microbes causing the infection by
- Cell "D" is of two types that have the same structure but different BL has on its cell membrane, while TL has on its cell membrane.

2. The constituents of blood are separated by a technique called "centrifugation", as shown in the figure below:

a. Choose the correct answer to label the tube containing blood after centrifugation.



White blood cells and red blood cells have different characteristics where some are represented in the table below.

b. Tick by using ✓ the characteristics that belong to each type of these cells:

Characteristics	Red blood cells	White blood cells
Produced in the bone marrow		
Do not contain hemoglobin		
Have a biconcave disc shape		
Have a small size		
Are nucleated cells		
Are few in number		
Also called leukocytes		

3. Choose the correct answer:

- a. has a mutilobed nucleus.
- b. is not an immune cell.
- c. has a large rounded nucleus.
- d. carries all blood cells.
- e. has a horseshoe shape nucleus.
- f. is an anucleated cell.
- g. is the biggest white blood cell.
- h. is the smallest white blood cell.