

Accommodation 1

Match the words below with their description. Then look at the adjectives in bold and put them into the appropriate section of the table depending on whether these words have a positive connotation (☺) or a negative connotation (☹). There is an example at the beginning (0).

caravan country cottage detached house villa bungalow
terraced house castle ~~tent~~ flat mansion



- 0 Old ones were made of canvas and were very basic. Ours is made of nylon and can sleep three people. It's surprisingly **cosy**, and very easy to set up. However, it can get a bit **damp** if it rains.
_____ tent
- 1 It's very impressive, isn't it? All those towers, turrets and ramparts. I would imagine that the rooms are very **spacious**, but I don't think anybody lives there anymore. There are probably no facilities, like electricity or running water. And it's probably very **draughty**.

- 2 It looks quite small, with probably just two or three rooms on each floor. They're probably a bit **cramped**, too. I'm not sure I'd like to live so close to my neighbours – you could hear everything that was going on on either side.

- 3 This is my idea of a typical modern family home. A living room, dining room and kitchen on the ground floor, three or four bedrooms and a bathroom upstairs, a garage and a small garden. It's not very **pretentious**, which is why I like it.

- 4 Who lives in a house like this? Probably somebody very rich. It's huge, isn't it? With those large windows, it's probably very **bright** and **airy** inside. And there's a long, tree-lined drive so that you can park your Rolls Royce collection.

- 5 I think it looks a bit **depressing**. I don't like high-rise accommodation. I imagine that the rooms are a bit **seedy** and **squalid**. It's not at all **homely**. I feel sorry for the people living there.
- 6 It's very pretty, with the garden and the flowers. It's probably a bit **basic** inside, and it might get a bit **claustrophobic** in the winter. A farmer might live here. Or maybe someone who has retired.
- 7 Look at that patio and the fountain! And there's a balcony too. It's probably somebody's holiday home. I imagine that inside it's very **roomy** with lots of mod cons – air-conditioning, home entertainment system and so on. And lots of cool white marble on the floor.
- 8 It's quite small, but probably very **practical** for an elderly person who has problems getting up the stairs. It looks like there might be a small room in the attic, or it might just be storage space.
- 9 It must be very **pokey** inside. It's OK for a holiday, but I'm surprised anybody could actually live here. I suppose the advantage is that if you get bored living in one place, you could just move, together with your home, somewhere else.

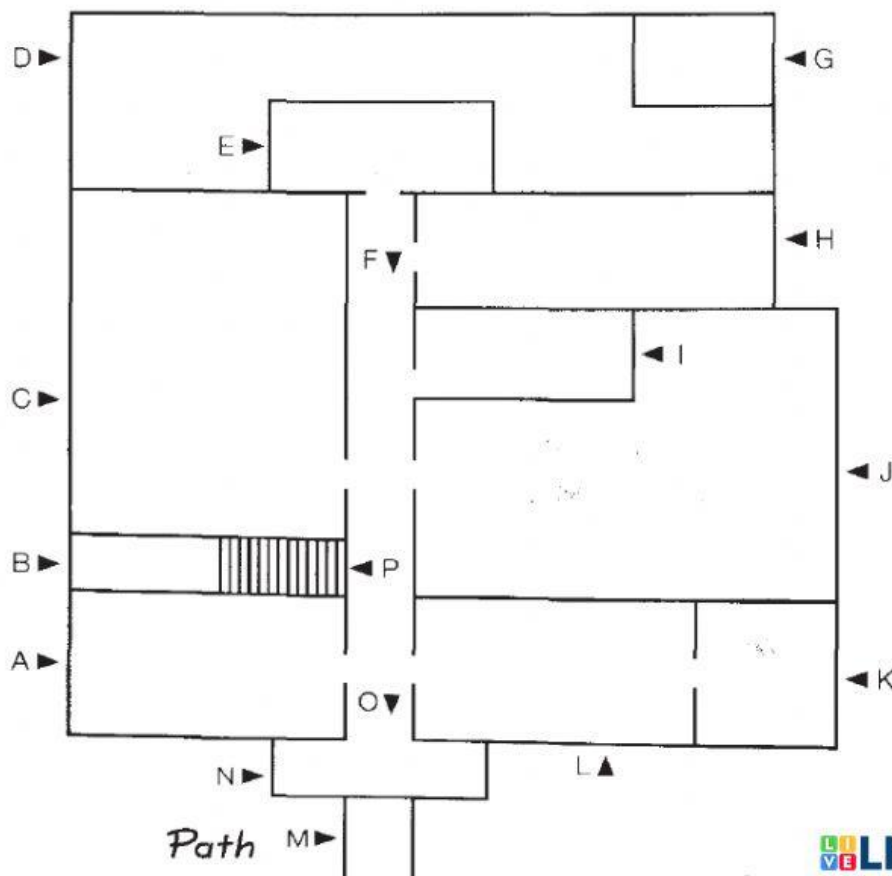
 These words have a positive connotation	 These words have a negative connotation
<p>cosy</p>	

28 Accommodation 2

SECT

Cover up the plan of the house at the bottom of this page, then read the description below. When you have done that, cover up the description and try to write the name of each feature into the plan.

I live in a bungalow on the outskirts of the city. There's a small, tree-lined **path** leading to the **porch**. As you go through the **front door**, you enter the **hall**. The first door on the right leads to the **kitchen-diner** and beyond that there's a small **utility room** where I keep the washing machine and fridge-freezer. The first door on the left leads to my **study**, where you'll find my desk and computer. Next to this room, there are some **stairs** leading down to the **cellar**, which I use for storage. After the stairs, also on the left, there's another door which goes through to the **living room**. Directly opposite this room is my **bedroom** and next to this there's a **bathroom**. The next room along is a small **bedsit**, with a bed and basic cooking facilities, which is being used by a student. At the end of the hall there's another door which opens out onto a small **terrace** and the **garden**, which has a few flowerbeds and a tiny lawn. There's a **shed** at the end of the garden where I keep my bicycle and gardening tools.



B Rearrange the mixed-up letters in **bold** in the following sentences to form an appropriate word.

0 If you can't afford to buy a flat, you will have to **tren** one.
rent

1 Our landlord told us that if we didn't pay him immediately, he would **ticve** us.

2 The local council are going to **medoshli** our apartment block as they claim it's dangerous.

3 We wanted to buy a house, so applied to the bank for a **tromggae**.

4 I think we should **rocedeta** the living room. What colour shall we paint it?

5 As we have some spare offices, perhaps we could **seale** them to another company.



In the exam ...

In the Speaking Test you may be asked to describe your home or your 'dream' home, or you may be asked to describe a photograph of a house or other building. In addition to giving a brief description of the building, you should try to say what you think of it, who might live there and so on.

In the Writing Paper you might also be asked to describe a house in a letter or a report. In addition to describing the different rooms using a variety of adjectives, you may also need to explain where the rooms are in relation to each other.

Notice how the description of the house in part A is organised 'spatially' (it begins at the front of the house and moves to the back of the house). Try to do this if you are asked to talk or write about a room or a building.

See also: Test 11 Location

Test 17 Shapes and features

Test 54 Picture description