

PRIMER ENSAYO SEGUNDO CICLO

Text 1 "Chilean Miners" questions 1 to 6.



Mario Sepulveda Espina, one of the miners, hugged his wife after he was rescued. An hour earlier, Florencio Avalos, 31, married with two children, was the first member of the group to be saved.

The miners were retrieved* one at a time with a custom-made capsule, the Phoenix. It took about one hour for each journey into the mine and back. The third rescued miner, Juan Illanes, reached the surface before 3 a.m. local time.

The first paramedic stepped into the capsule at around 11:15 p.m. on Tuesday. Many of the miners' family members stayed at nearby "Camp Hope" since they heard on August 22nd that the 33 men survived the rock collapse 17 days earlier.

Many local reporters and reporters all around the world covered this event and even a Hollywood movie was created from this incident.

***Glosario:**

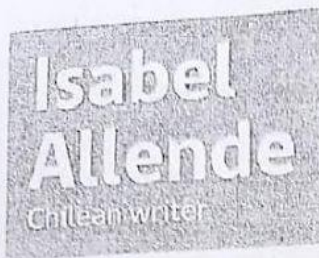
Underground: bajo tierra.

Were retrieved: fueron extraidos / sacados a la superficie.

- 1- What is the text about?
- a) A newspaper.
 - b) Chilean rocks collapsing.
 - c) A rescuing operation.
 - d) A movie.

- 2- Who stepped into the capsule at 11:15 pm?
- a) The mother o a miner.
 - b) A paramedic.
 - c) A miner.
 - d) An interviewer.
- 3- How many days did the miners stay underground?
- a) 33.
 - b) 22.
 - c) 17.
 - d) 69.
- 4- What was created from this incident?
- a) A big camp.
 - b) A Hollywood movie.
 - c) A store.
 - d) A television series.
- 5- Why did the family members stay at the nearby "Camp Hope"? A continuación escriba su respuesta en español:
-
-
- 6- According to the text, who was rescued first? A continuación escriba su respuesta en español:
-
-

Text 2 "Isabel Allende" questions 7 to 10.



Personal life

In 1962, Isabel Allende married her first husband, Miguel Frías. They had two children, Paula (born in 1963) and Nicolás (born in 1966). After her divorce from Frías in 1987, Allende met and married her second husband, Willie Gordon, but after 27 years together, they divorced in 2015.

In 1982, Allende's daughter Paula, died from complications of a rare disease*, porphyria, when the girl was 28 years old. After her daughter's death, Allende established the Isabel Allende Foundation in Paula's honor.

Best sellers



Allende has lived in the San Francisco Bay Area since 1987, and became* a U.S. citizen in 1993. She says on her website that she lives "with one foot in California and the other in Chile."

Awards

During the course of her career, Allende has received* numerous awards* for her work including the Chilean National Prize for Literature (2010) and the Library of Congress Creative Achievement Award for Fiction (2010). In 2014, President Barack Obama presented Allende with the Presidential Medal of Freedom.

*Glosario:

Disease: enfermedad.

Became: llegó a ser.

Has received: ha recibido.

Awards: premios.

- 7- When did Isabel Allende receive the Chilean National Prize for Literature?
- a) 1993.
 - b) 2010.
 - c) 2014.
 - d) 1982.
- 8- What happened to Isabel in 1993?
- a) She got married.
 - b) Her daughter was born.
 - c) She became a U.S citizen.
 - d) She received a prize.

9- What word can you use to describe a talented writer as Isabel Allende? A continuación escriba su respuesta en español:

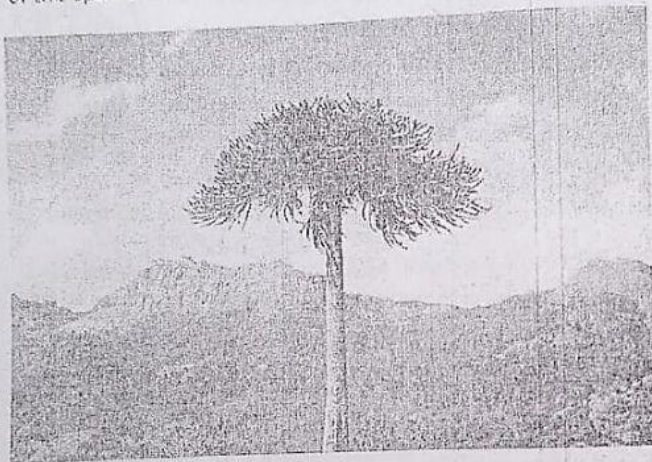
_____.

10- According to the text, what book did Isabel Allende write? A continuación escriba su respuesta en español:

_____.

Text 3 "Araucaria Araucana" questions 11 to 13.

Araucaria araucana is an evergreen^{*} tree growing to 1-1.5 metres in diameter and 30-40 metres in height^{*}. Araucaria araucana is described as a living fossil, because of the longevity of this species. It is also the national tree of Chile.



It was named *Pinus araucana* by Juan Ignacio Molina in 1782. In 1873, after several further redescriptions, Karl Heinrich Emil published the combination *Araucaria araucana*. The name *araucana* is derived from the native Araucanians who used the nuts (seeds)^{*} of the tree in Chile. A group of Araucanians living in the Andes, the Pehuenches, owe their name to their diet based on *araucaria* seeds. *Pehuen* means *Araucaria* and *che* means people in Mapudungun.

***Glosario:**

Evergreen: de hoja perenne.

Height: altura.

Nuts (seeds): nueces (semillas).

11- Why is the Araucaria Araucana described as a fossil?

- a) Because of its nationality.
- b) Because of its form.
- c) Because of the longevity of this species.
- d) Because it is a big tree.

12- Who gave the first name to this tree?

- a) Foreign travellers.
- b) The Pehuenches.
- c) An old man.
- d) Juan Ignacio Molina.

- 13- According to the text, what do Pehuenches eat on their diet? A continuación escriba su respuesta en español.
-

Text 4 "Do animals have feelings?" questions 14 to 18.

Do animals have feelings?

Most pet owners think animals have feelings.

Molly the dog and Whiskers the cat can feel angry, depressed, neglected, happy, even jealous and guilty.



Many scientists, however, are sceptical* about giving animals the full range of emotions that humans feel. Part of the problem is that it is impossible to prove that even a human being is feeling happy or sad. In fact*, it is only because we observe body language and facial expression that we can deduce it. And of course humans express the emotion with language.

However, most researchers do agree that many creatures experience fear. Some scientists define this as a primary emotion.

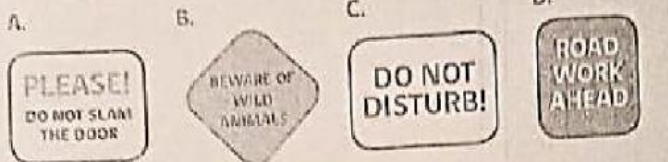
*Glosario:
Sceptical: esceptico / incrédulo.
In fact: de hecho.

- 14- What are many scientists sceptical about?
- a) Creatures can feel anger.
 - b) Giving animals the full range of human emotions.
 - c) Humans can express love.
 - d) Humans can express hate.
- 15- According to the text what primary emotion is experienced by animals?
- a) Anger.
 - b) Sadness.
 - c) Fear.
 - d) Jealousy.
- 16- What can we deduce from human being facial expression?
- a) What an animal feels.
 - b) What a human thinks.
 - c) An opinion about their pets.
 - d) What a person is feeling.
- 17- According to the text, how do humans express the emotion? A continuación escriba su respuesta en español:
-
-

18- How do you think a dog can communicate its emotions? A continuación escriba su respuesta en español:

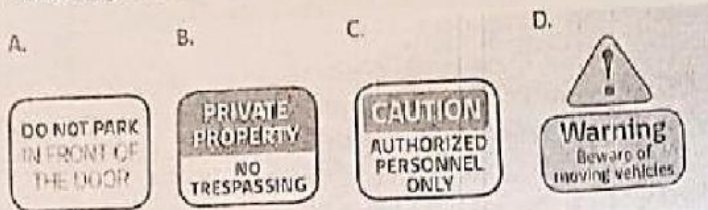
Instructions for questions 19 to 22, answer according to the image in the space given.

19- Which sign says "do not interrupt?"



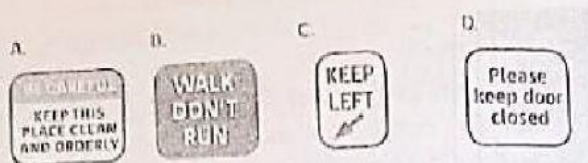
Your answer: _____

20- Which sign means "do not leave your car here"?



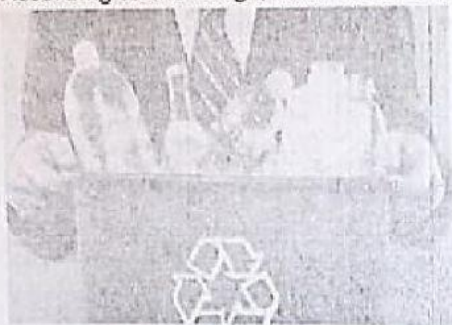
Your answer: _____

21- Which sign is asking you to go slowly?



Your answer: _____

22- According to the image, what material do you have to recycle in the container?



- a) Paper.
- b) Plastic bottles.
- c) Metal.
- d) Food waste.

NAME: _____