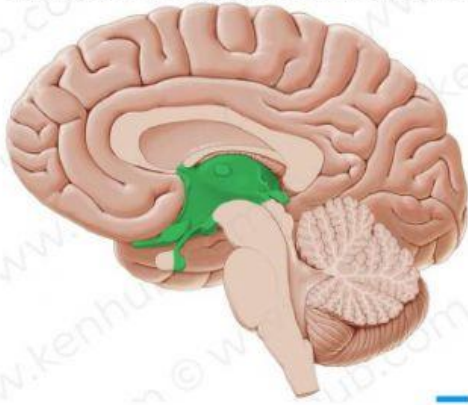


Northern Bilingual Adventist School  
Biology Quiz: The Central Nervous System

Student: \_\_\_\_\_ Grade: \_\_\_\_\_ Date: \_\_\_\_\_

1. Label the 4 major parts of the **brain** on the diagram. Then write the smaller parts into which each part is divided.



1. **Cerebrum:** \_\_\_\_\_, \_\_\_\_\_,  
\_\_\_\_\_ and \_\_\_\_\_.

2. **Brain stem:** \_\_\_\_\_,  
and \_\_\_\_\_.

3. **Diencephalon:** \_\_\_\_\_,  
and \_\_\_\_\_.

4. **Cerebellum.**

2. Name the 5 **spinal cord** segments and write the number of nerves for each part.

