

PLACES IN TOWN

1. Write the words you hear:

- a.
- b.
- c.
- d.

- e.
- f.
- g.
- h.

2. Look at the picture and choose the correct words.

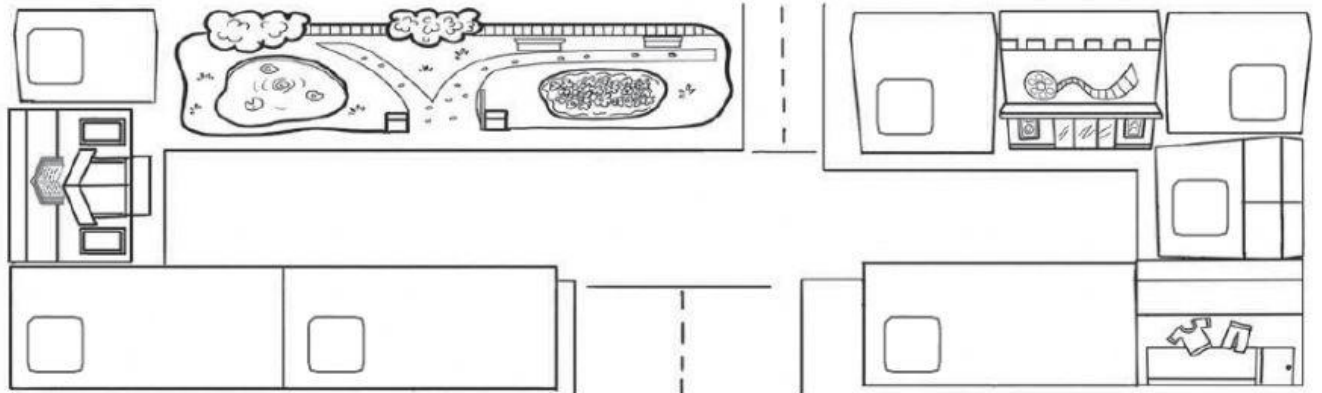


- 1. The toy shop / cinema is opposite/ next to the sports centre.
- 2. There is a café / bus stop near / opposite the police station.
- 3. There is a library / a toy shop between the sports centre and the café.
- 4. The park/ police station is opposite the bus stop.

3. Write in English:

- 1. ¿Hay una parada de autobús cerca de aquí? Sí, la hay.
- 2. ¿Hay un cine en este pueblo? No, no lo hay. (Pueblo = village).
- 3. ¿Hay algunas tiendas en esta ciudad? Sí, las hay. (Ciudad = town).

4. Listen and drag the numbers to the correct place.



1

2

3

4

5

6

7