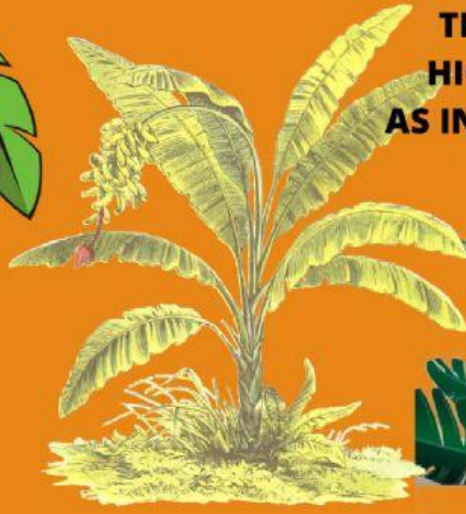


THE BIOMES

A BIOME IS A SET OF TYPICAL ECOSYSTEM OF A GEOGRAPHICAL AREA WITH CHARACTERISTIC VEGETATION AND ANIMAL SPECIES OF THAT UNIQUE AREA.



TROPICAL



**THE TEMPERATURES ARE
HIGHER ALL YEAR ROUND
AS IN THE EQUATORIAL ZONE.**





FOREST



**EXTENSION OF LAND DENSELY
POPULATED WITH TREES
SHRUBS AND BUSHES.**

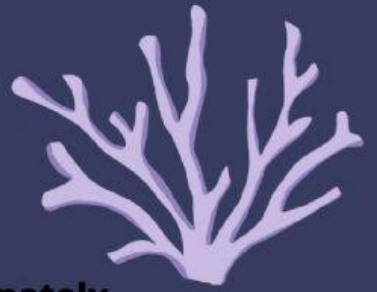


THE FOREST ARE IN THE MONTAINS

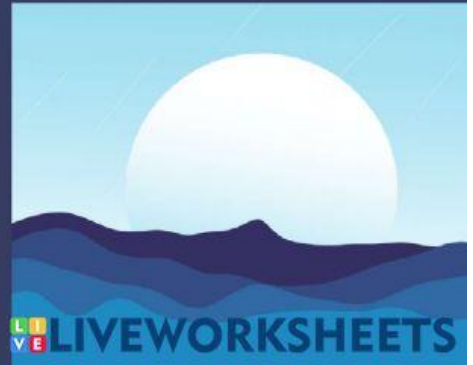
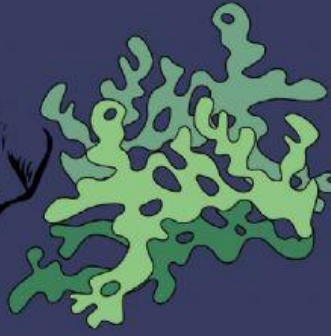
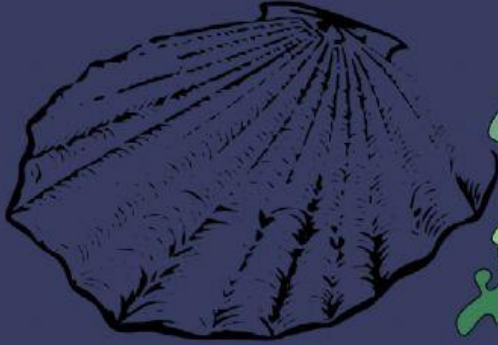




Ocean



Mass of salt water that covers approximately
three quarters of the earth's surface



Desert

A desert is that it is depopulated of uninhabited



JOIN WITH ARROWS.



Scorpion



Pinp



Shell



LIVEWORKSHEETS

Complete the text

TYPICAL-AREA-ANIMAL-AREA.

A biomes is a ecosystems of a geographical with characteristic vegetation and species ofthat unique .





DRAG AND DROG

PALM-CORA-TREE-BANANA-ALGAE-SQUIREL

