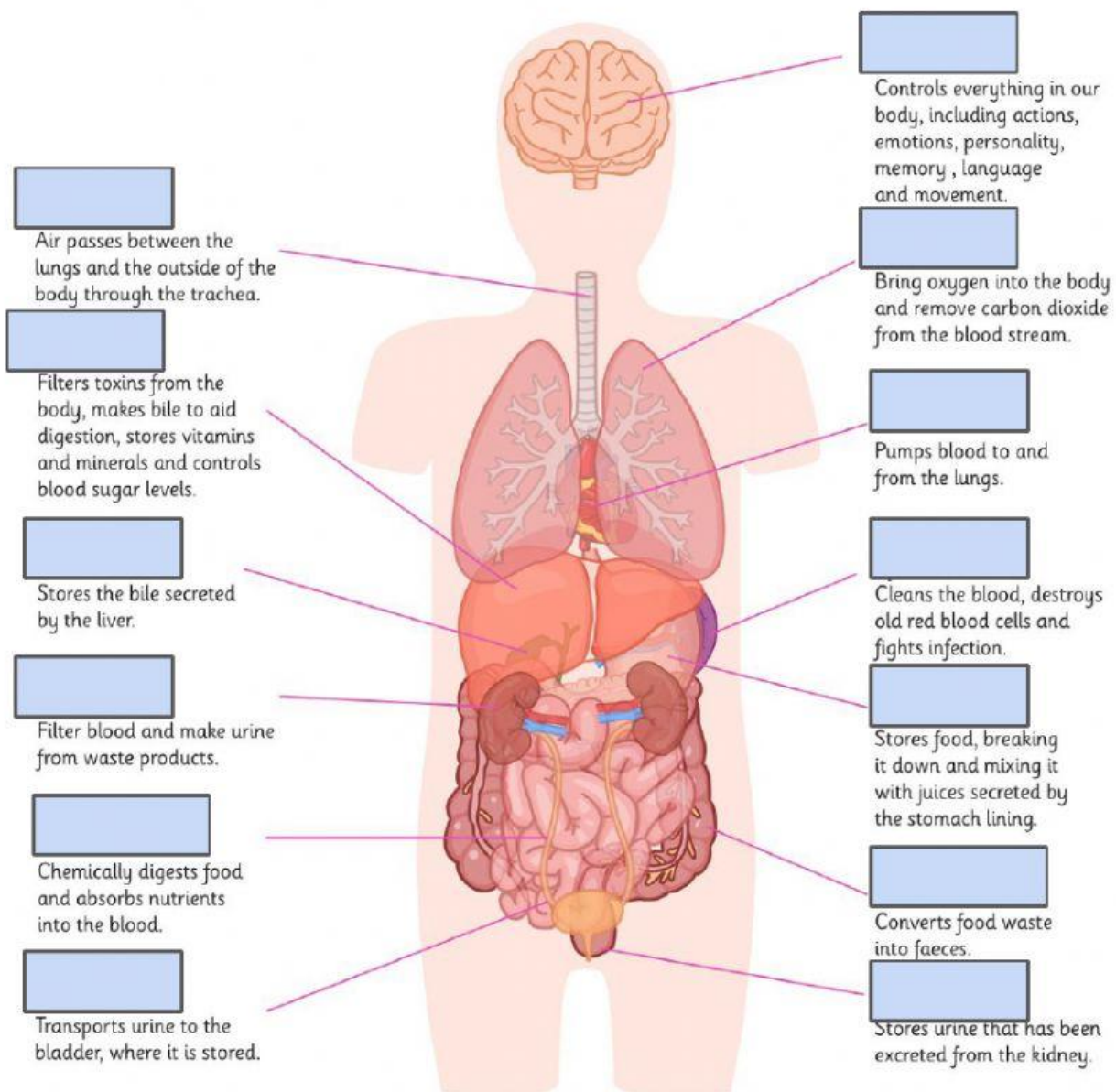


1. Label the organs in the blanks:



2. Find the main organs, then, classify them:

heartstomachkidneyslungsintestinesbloodvesselstrachea

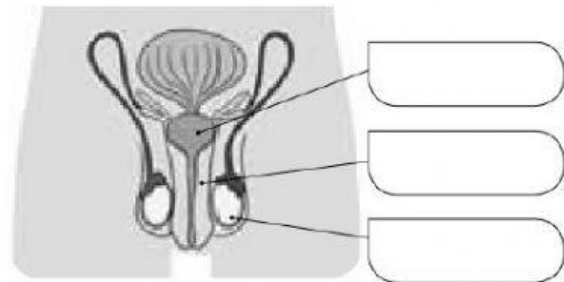
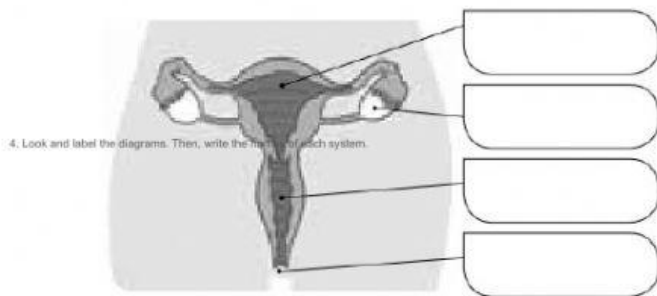
digestive system	respiratory system	circulatory system	excretory system

3. Match and write the sentences.

- | | |
|--|------------------------------|
| a. Reproduction allows | to mature during puberty. |
| b. People have sexual reproduction | and are viviparous. |
| c. Sexual organs begin | people to have offspring. |
| d. Physical changes during puberty are | different for men and women. |

4. Look at the diagrams. Label with the words in the box, then, write the name of each system below.

uterus — testes — penis — vagina — ovaries — prostate gland — vulva



5. Drag and drop the names under each picture.



6. Read the sentences. Choose true or false.

- a. Adults can have jobs and own a house or a car.
- b. Teenagers live on their own, independently.
- c. Infants can walk when they become toddlers.
- d. An infant goes to primary school.
- e. Children are able to do many things independently, dress up, eat their own food...
- f. Elderly people are retired from their jobs.